

# STAMBENA ZGRADA K, ŠPANSKO SJEVER, ZAGREB

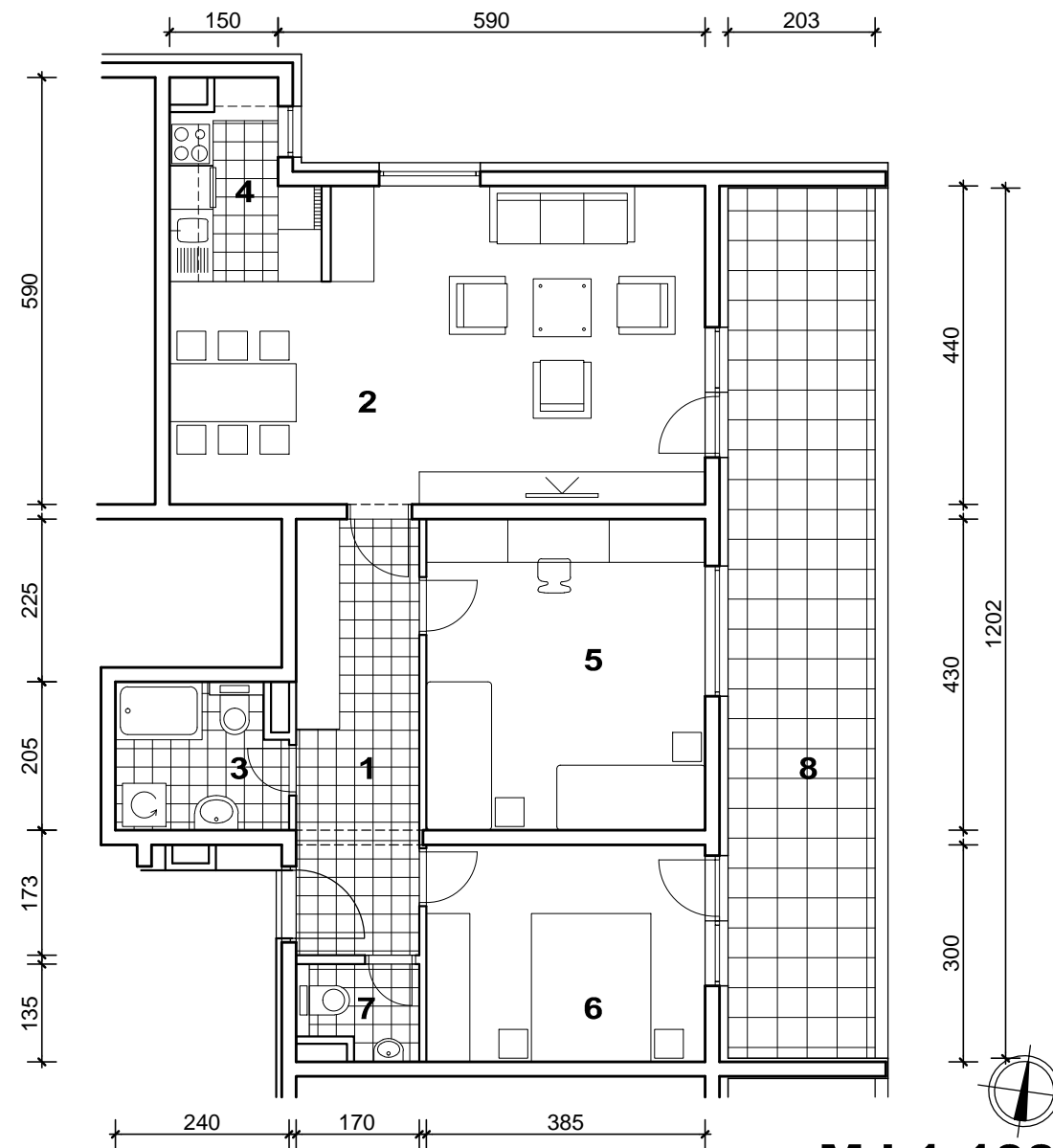
# STAN K-35



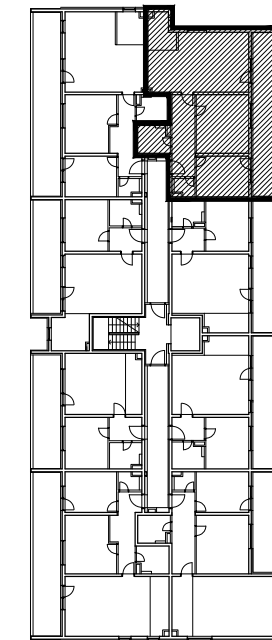
POLOŽAJ U GRADU



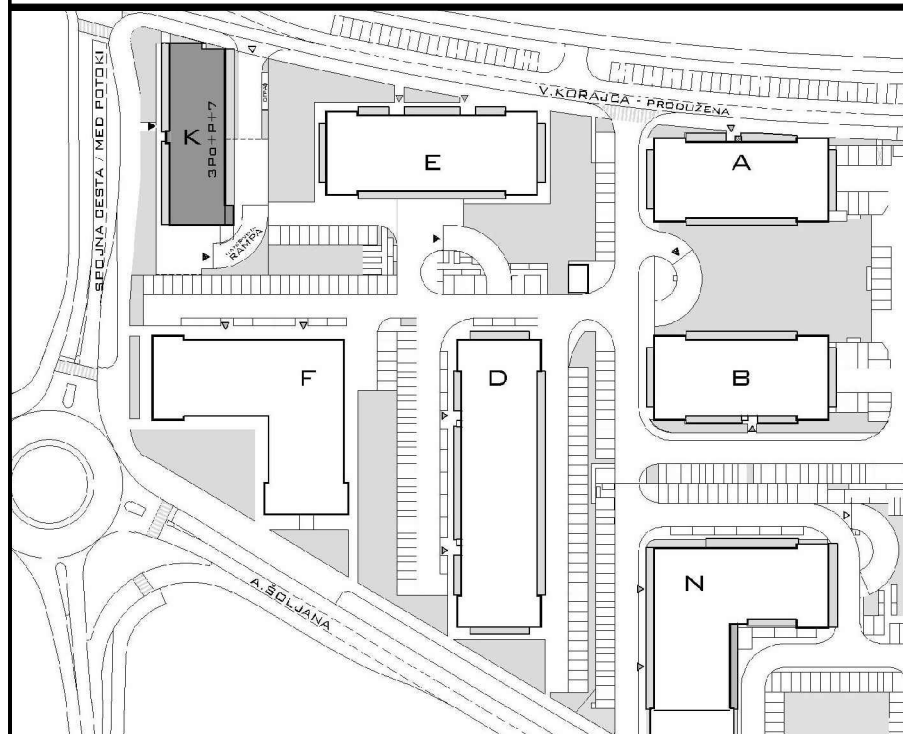
SITUACIJA



MJ 1:100



4. KAT  
POLOŽAJ STANA U ZGRADI

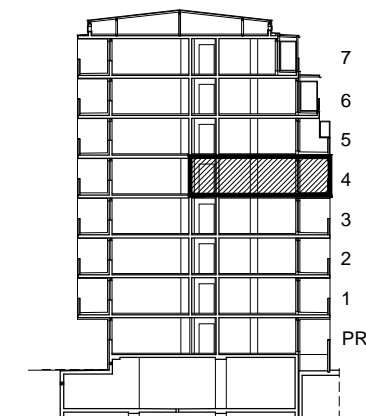


## STAN K-35 - trosobni

## 4. KAT

1. ULAZ	10.24	m2
2. DNEVNI BORAVAK	29.62	m2
3. KUPAONICA	4.64	m2
4. KUHINJA	4.72	m2
5. SOBA	16.55	m2
6. SOBA	11.55	m2
7. WC	2.02	m2
8. LOGGIA	0.75x24.40	18.30 m2
<b>SVEUKUPNO</b>	<b>97.64</b>	<b>m2</b>

## PRESJEK



POLOŽAJ STANA NA PRESJEKU

**STAN K-35 P= 97.64 m2**