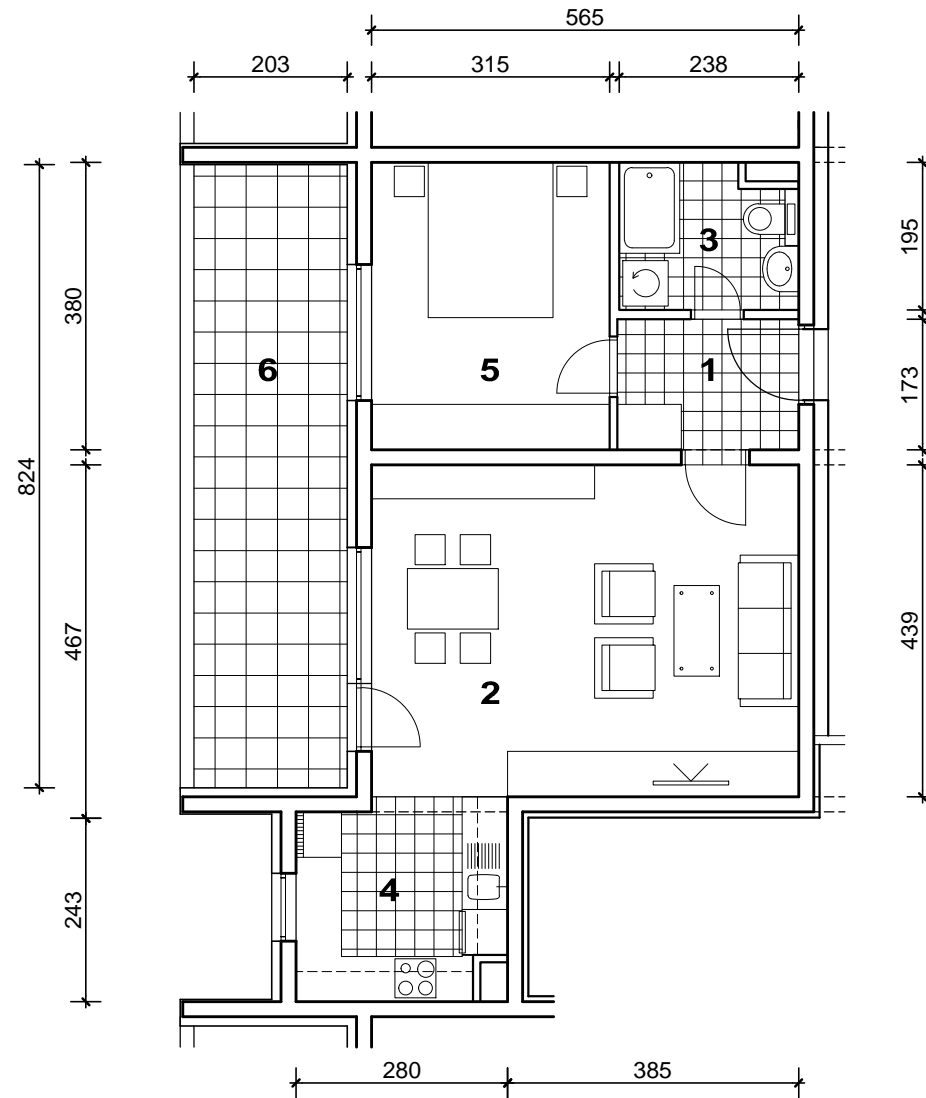


POLOŽAJ U GRADU



SITUACIJA



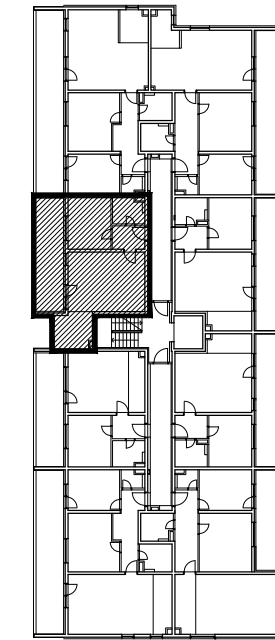
MJ 1:100



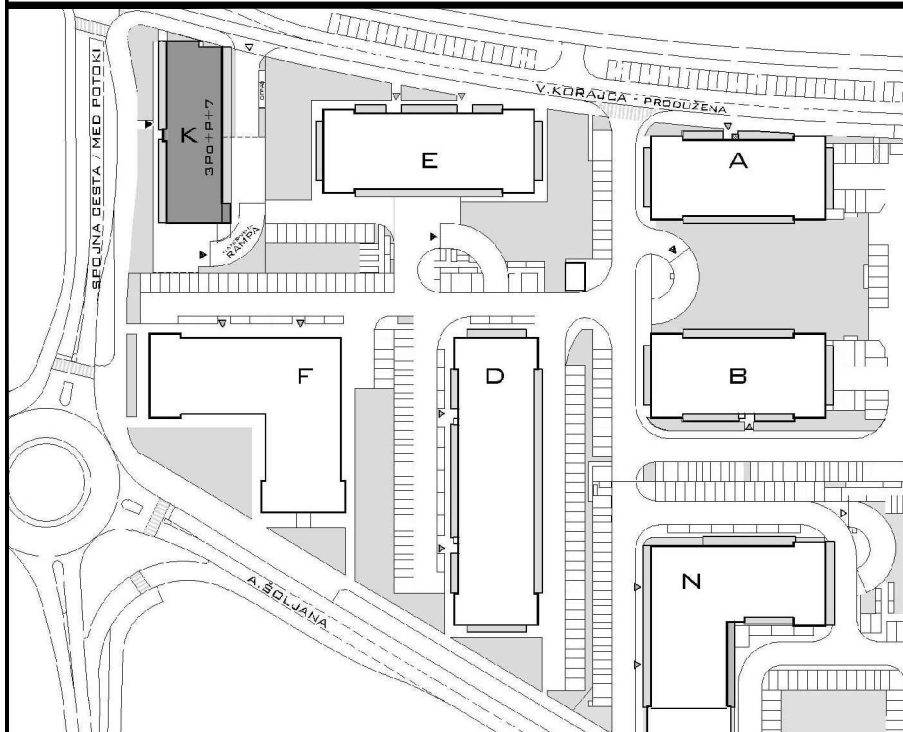
STAN K-33 - dvosobni

4. KAT

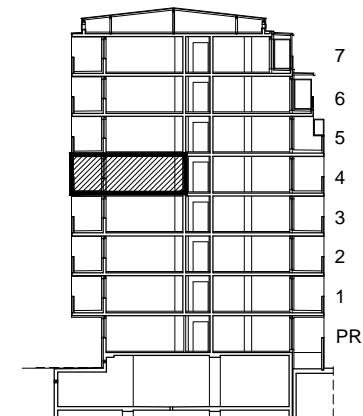
1. ULAZ	4.14	m2
2. DNEVNI BORAVAK	24.80	m2
3. KUPAONICA	4.35	m2
4. KUHNJA	7.10	m2
5. SOBA	11.97	m2
6. LOGGIA	0.75x16.73	12.55 m2
<b>SVEUKUPNO</b>		<b>64.91 m2</b>



4. KAT  
POLOŽAJ STANA U ZGRADI



PRESJEK



POLOŽAJ STANA NA PRESJEKU