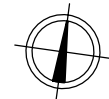


# STAMBENA ZGRADA K, ŠPANSKO SJEVER, ZAGREB

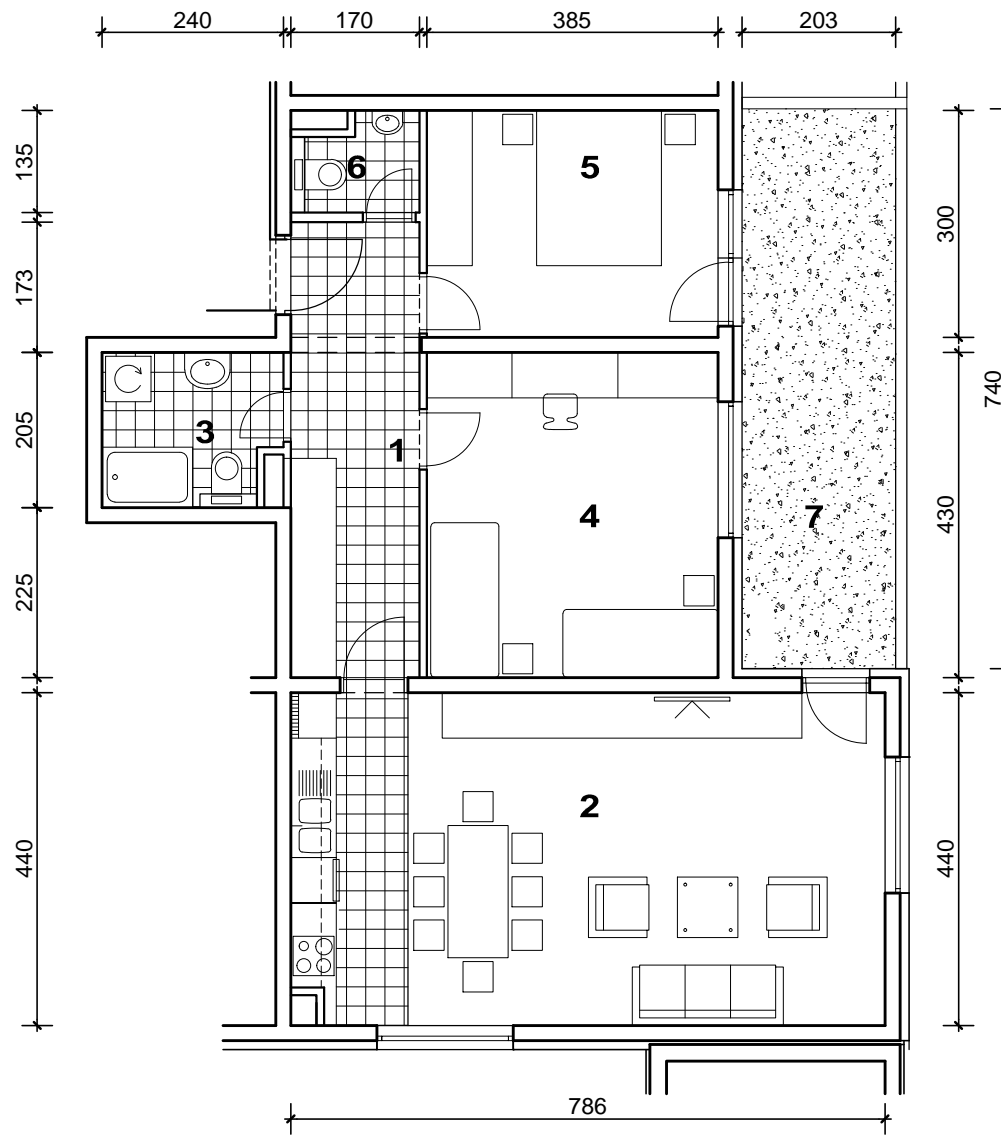
# STAN K-6



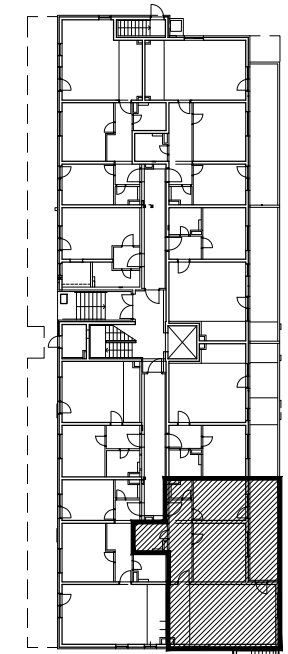
POLOŽAJ U GRADU



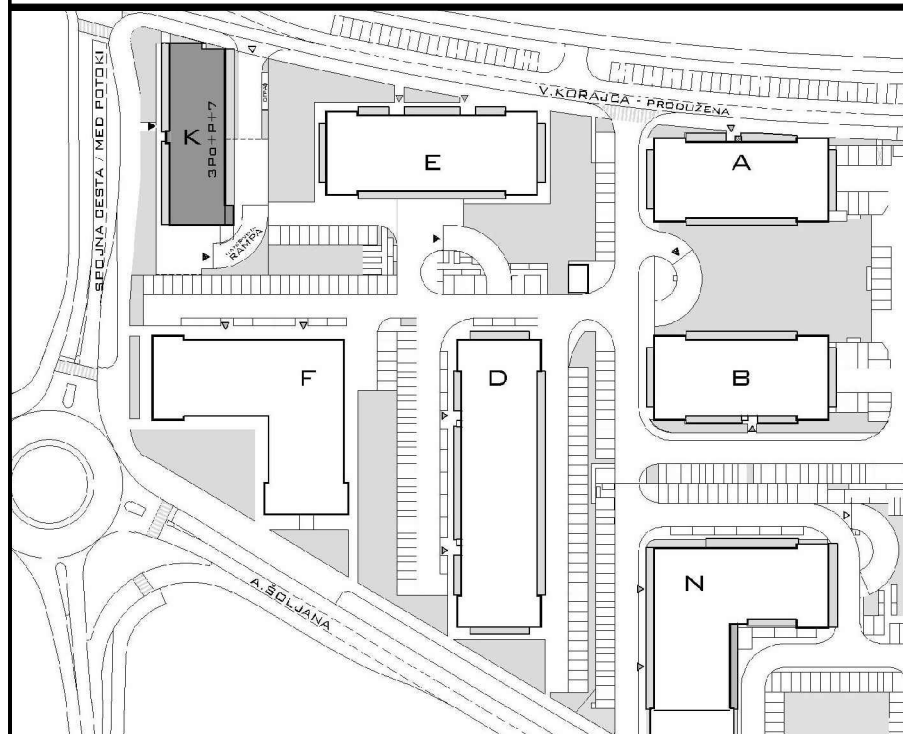
SITUACIJA



MJ 1:100



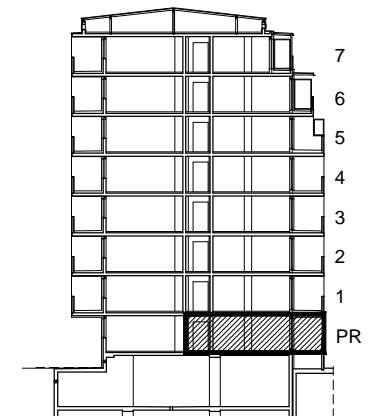
PRIZEMLJE  
POLOŽAJ STANA U ZGRADI



## STAN K-6 - trosobni PRIZEMLJE

1. ULAZ	10.24	m2
2. KUHINJA + DNEVNI BORAVAK	34.36	m2
3. KUPAONICA	4.64	m2
4. SOBA	16.55	m2
5. SOBA	11.55	m2
6. WC	2.00	m2
SVEUKUPNO	79.34	m2
7. VRT	15.03	m2

## PRESJEK



POLOŽAJ STANA NA PRESJEKU

**VRT P= 15.03 m2, STAN K-6 P= 79.34 m2**