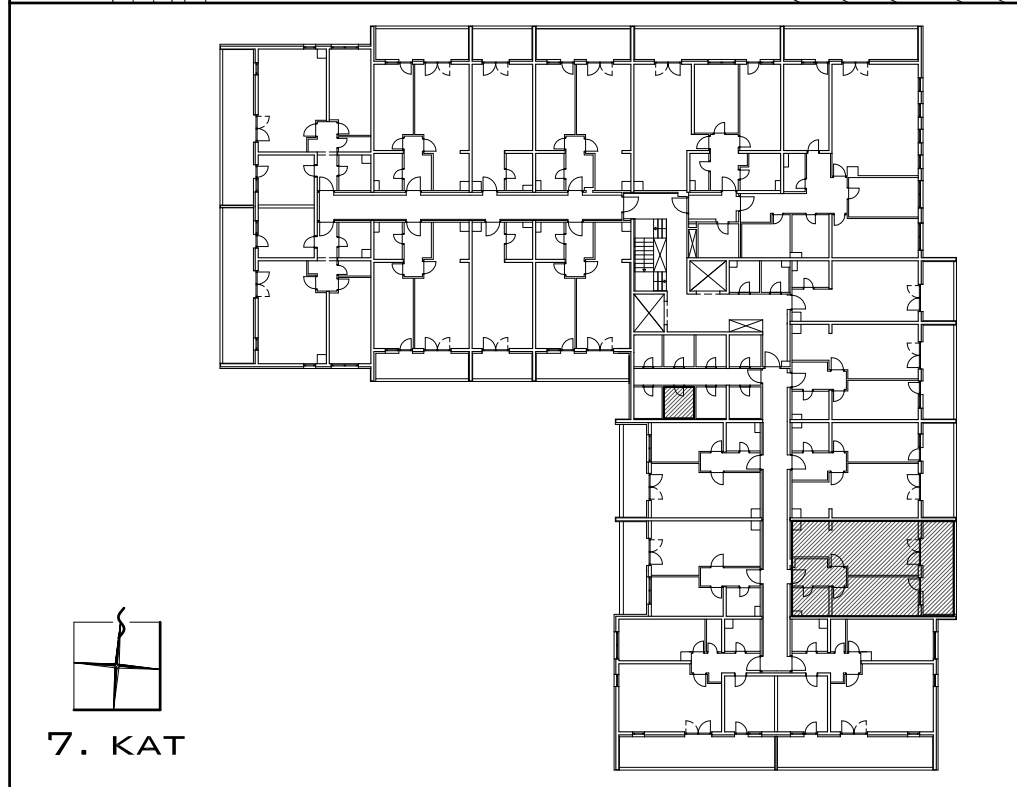


7. KAT  
2- SOBNI **62,38 M<sup>2</sup>**

|                            |                                    |
|----------------------------|------------------------------------|
| 1 ULAZ                     | 5,64 M <sup>2</sup>                |
| 2 DN. BORAVAK              | 20,37 M <sup>2</sup>               |
| 3 SOBA                     | 14,08 M <sup>2</sup>               |
| 4 KUHINJA                  | 5,46 M <sup>2</sup>                |
| 5 KUPAONICA                | 4,37 M <sup>2</sup>                |
| 6 LODJA                    | 12,44 x 0,75 = 9,33 M <sup>2</sup> |
| <b>59,25 M<sup>2</sup></b> |                                    |



7. KAT



ISTOK

SPREMIŠTE 113 4,17 x 0,75 = **3,13 M<sup>2</sup>**  
IZVAN STANA, NA ISTOJ ETAŽI

