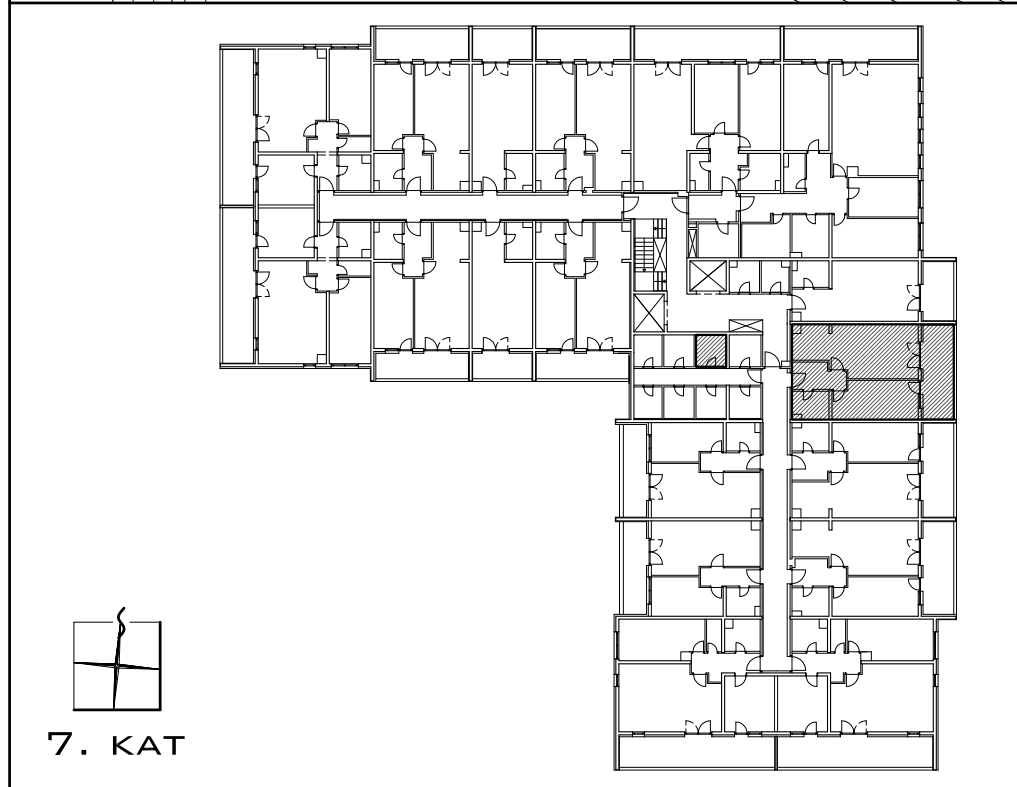


7. KAT
2- SOBNI **62,63 M²**

| | |
|----------------------------|------------------------------------|
| 1 ULAZ | 5,73 M ² |
| 2 DN. BORAVAK | 20,37 M ² |
| 3 SOBA | 14,08 M ² |
| 4 KUHINJA | 5,46 M ² |
| 5 KUPAONICA | 4,37 M ² |
| 6 LODJA | 12,63 x 0.75 = 9,47 M ² |
| 59,48 M² | |



7. KAT



ISTOK

SPREMIŠTE 111 4,20 x 0.75 = **3,15 M²**
IZVAN STANA, NA ISTOJ ETAŽI

