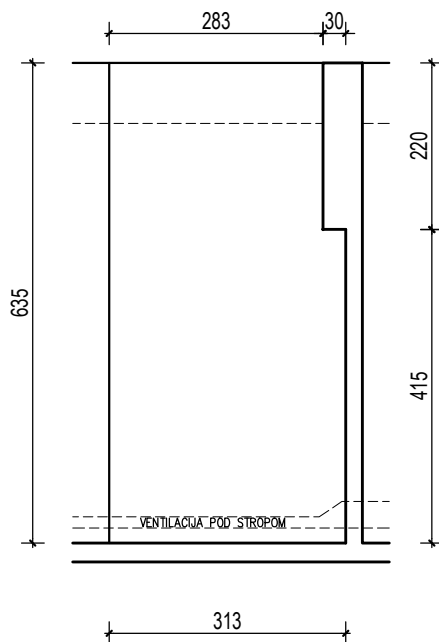


VISINA PARKIRALIŠTA cca 245 cm

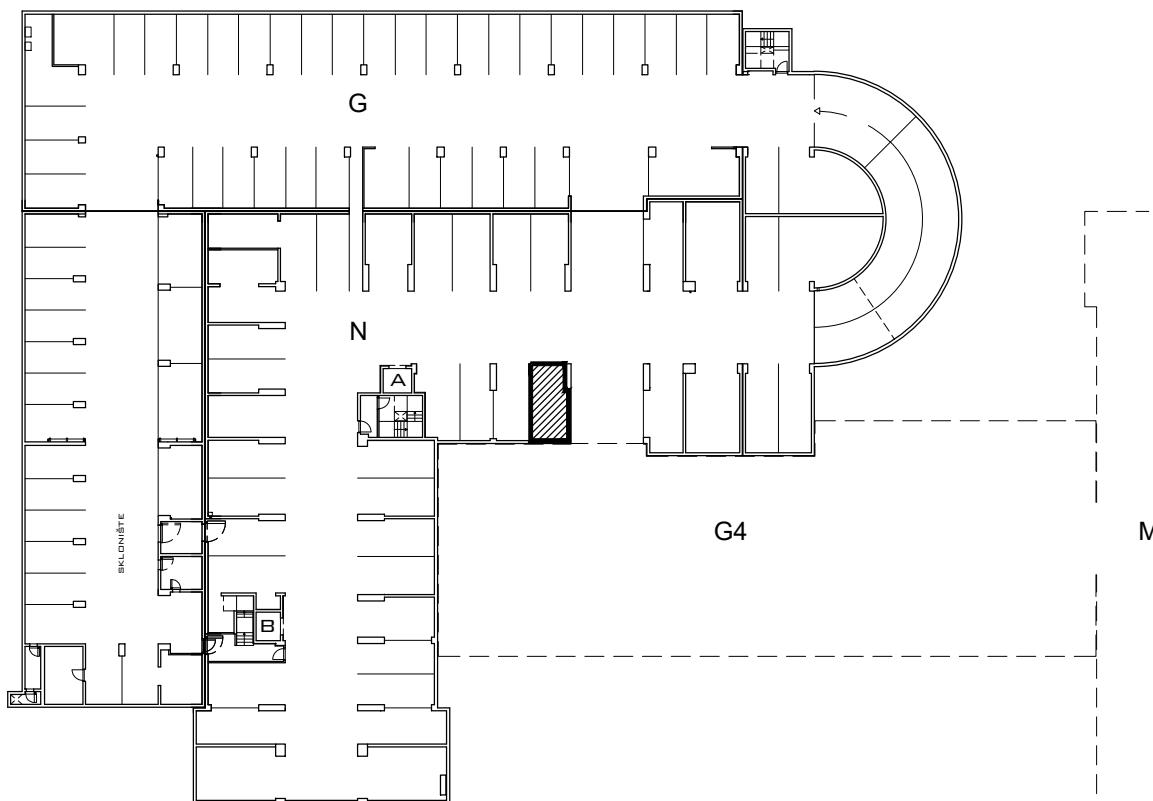


MJ 1:100

PODRUM -2 , DIO N, PARKIRALIŠTE N-75

P= 19,22 m²

NAPOMENA: PO POTREBI TREBA OMOGUĆITI PRISTUP ZAJEDNIČKIM INSTALACIJAMA



POLOŽAJ PARKIRALIŠTA U GARAŽI NA ETAŽI PODRUM -2