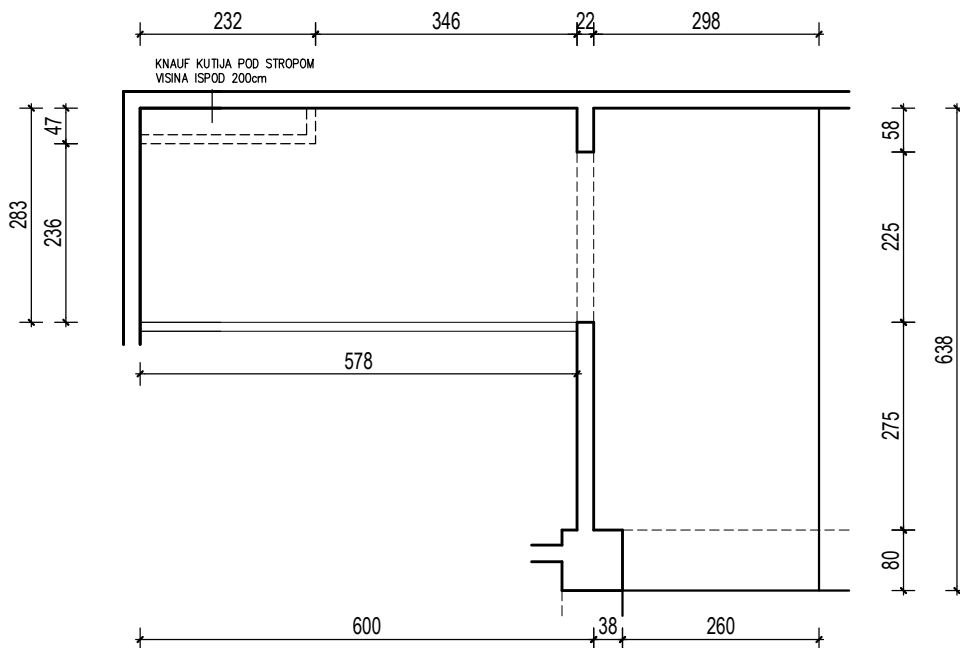


VISINA PARKIRALIŠTA cca 245 cm

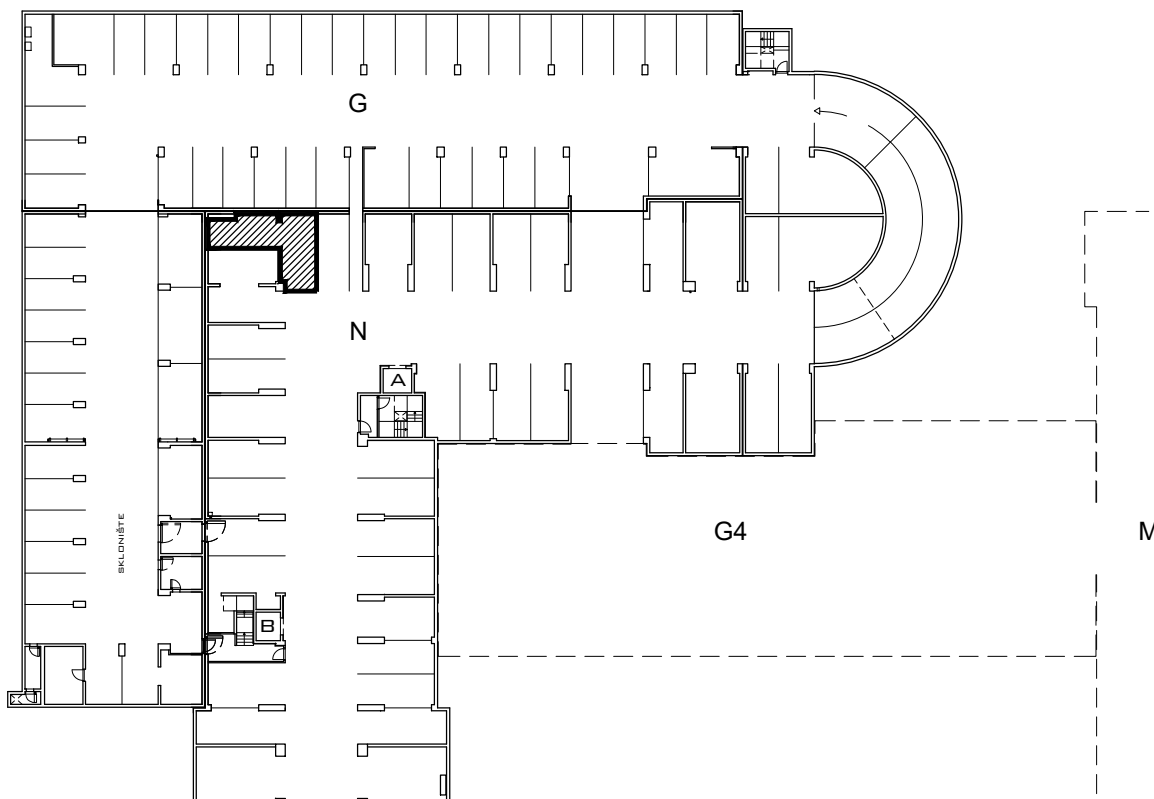


MJ 1:100

PODRUM -2 , DIO N, PARKIRALIŠTE N-51

P= 35,56 m²

NAPOMENA: PO POTREBI TREBA OMOGUĆITI PRISTUP ZAJEDNIČKIM INSTALACIJAMA



POLOŽAJ PARKIRALIŠTA U GARAŽI NA ETAŽI PODRUM-2