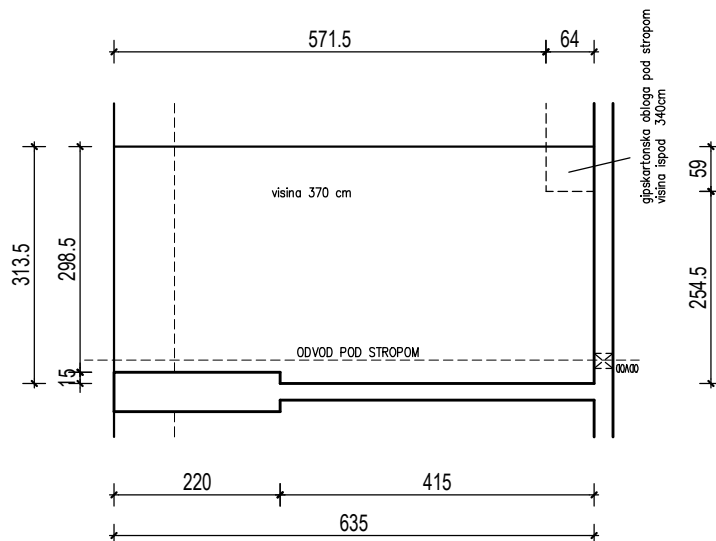


VISINA PARKIRALIŠTA cca 370 cm

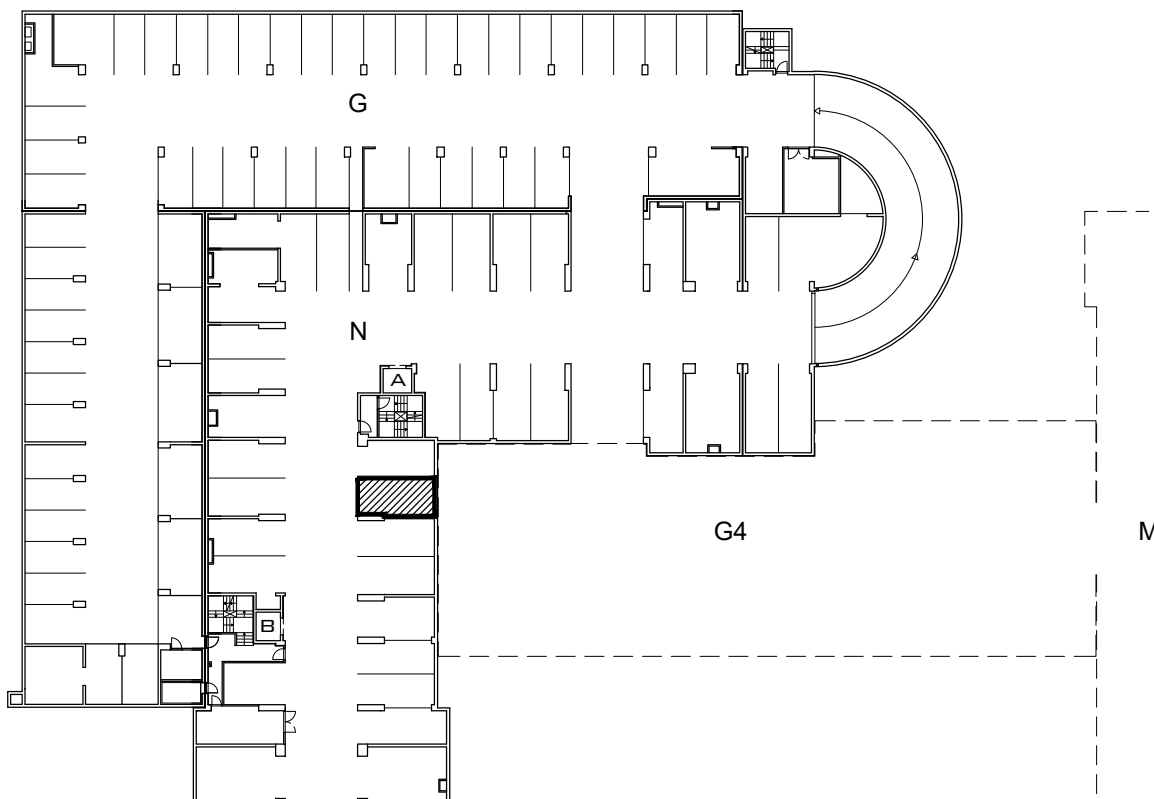


MJ 1:100

PODRUM -1 , DIO N, PARKIRALIŠTE N-29

P= 19,58 m²

NAPOMENA: PO POTREBI TREBA OMOGUĆITI PRISTUP ZAJEDNIČKIM INSTALACIJAMA



POLOŽAJ PARKIRALIŠTA U GARAŽI NA ETAŽI PODRUM -1