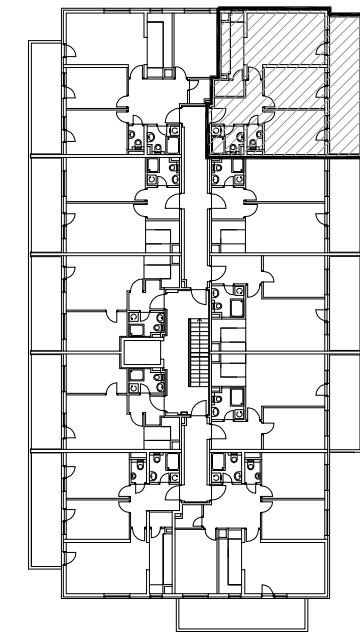


MJ 1:100

STAN F2-44 - trosobni 5. KAT

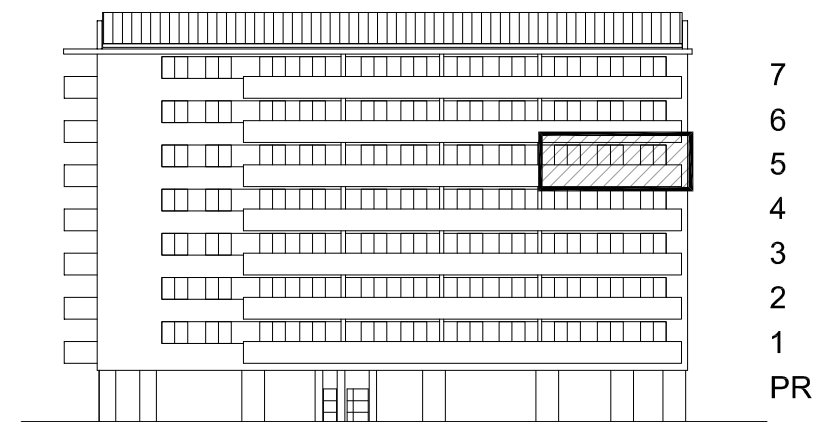
1. ULAZ	7.08 m ²
2. DNEVNI BORAVAK	18.50 m ²
3. KUPAONICA	3.81 m ²
4. KUHINJA	6.44 m ²
5. SOBA	10.87 m ²
6. SOBA	11.79 m ²
7. WC	1.60 m ²
8. IZBA	2.05 m ²
9. LOGGIA	0.75x18.12 13.59 m ²
SVEUKUPNO	75.73 m²

TLOCRT KARAKTERISTIČNOG KATA



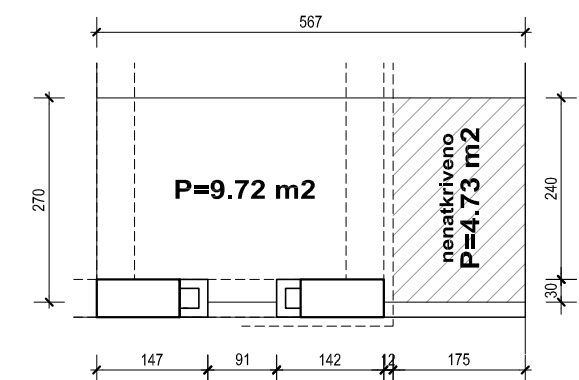
POLOŽAJ STANA U ZGRADI

PROČELJE ISTOK



POLOŽAJ STANA NA PROČELJU

VANJSKO PARKIRALIŠTE VP-65 natkriveno



STAN F2-44 P= 75.73 m², VANJSKO PARKIRALIŠTE VP-65 P=14.45 m²