

MJ 1:100

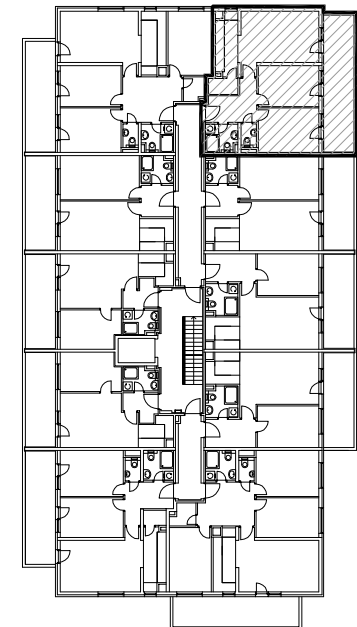
STAN F2-44 - trosobni

5. KAT

1. ULAZ		7.08 m <sup>2</sup>
2. DNEVNI BORAVAK		18.50 m <sup>2</sup>
3. KUPAONICA		3.81 m <sup>2</sup>
4. KUHINJA		6.44 m <sup>2</sup>
5. SOBA		10.87 m <sup>2</sup>
6. SOBA		11.79 m <sup>2</sup>
7. WC		1.60 m <sup>2</sup>
8. IZBA		2.05 m <sup>2</sup>
9. LOGGIA	0.75x18.12	13.59 m <sup>2</sup>
SVEUKUPNO		75.73 m <sup>2</sup>

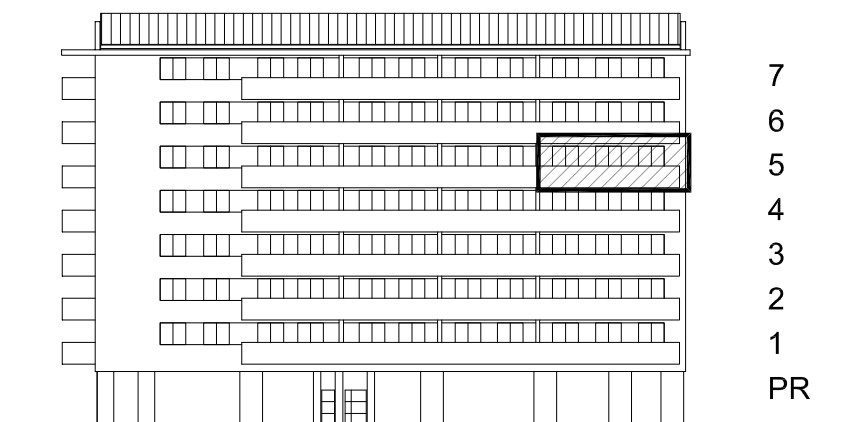
STAN F2-44 P= 75.73 m<sup>2</sup>, VANJSKO PARKIRALIŠTE VP-53 P=14.21 m<sup>2</sup>

TLOCRT KARAKTERISTIČNOG KATA



POLOŽAJ STANA U ZGRADI

PROČELJE ISTOK



POLOŽAJ STANA NA PROČELJU

VANJSKO PARKIRALIŠTE VP-53  
natkriveno

