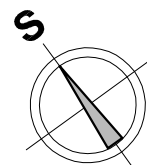
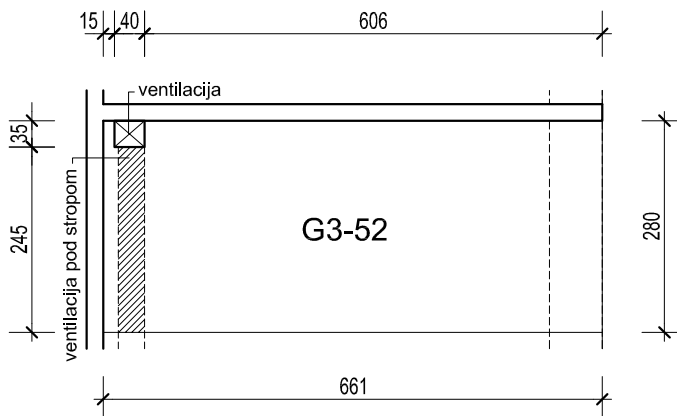


**POSLOVNO STAMBENI KOMPLEKS U LASTOVSKOJ ULICI, SAVICA, ZAGREB**  
**PODZEMNA GARAŽA - DIO GARAŽE OZNAKE G3**

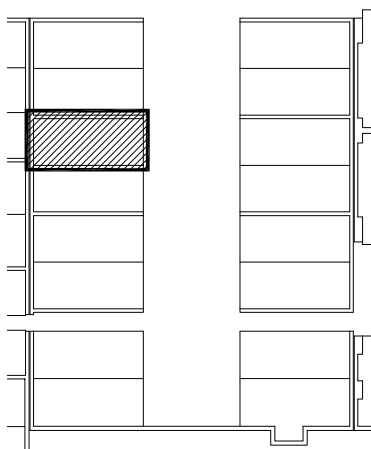
Visina parkirališta cca 245 cm.

h=245 cm	17,49 m <sup>2</sup>
h<220 cm 0,86x0,75=	0,65 m <sup>2</sup>
<hr/>	
18,14 m <sup>2</sup>	



**MJ 1:100**

**PODRUM -3, PARKIRALIŠTE G3-52**



Napomena:

Na nacrtu nisu prikazane instalacije iznad kote +220 od gotovog poda.

**POLOŽAJ PARKIRALIŠTA U GARAŽI**

**P=18.14 m<sup>2</sup>**