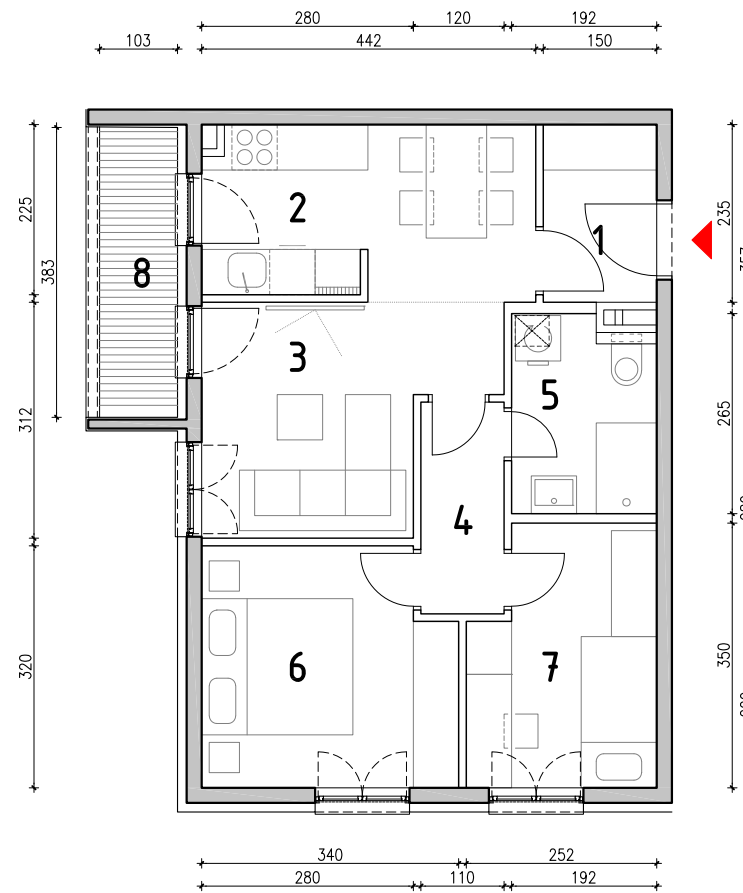


TLOCRT STANA_mj 1:100



STAMBENA ZGRADA

ULICA GRADA WIRGESA bb, SAMOBOR

PRIZEMLJE - STAN S4 3-sobni

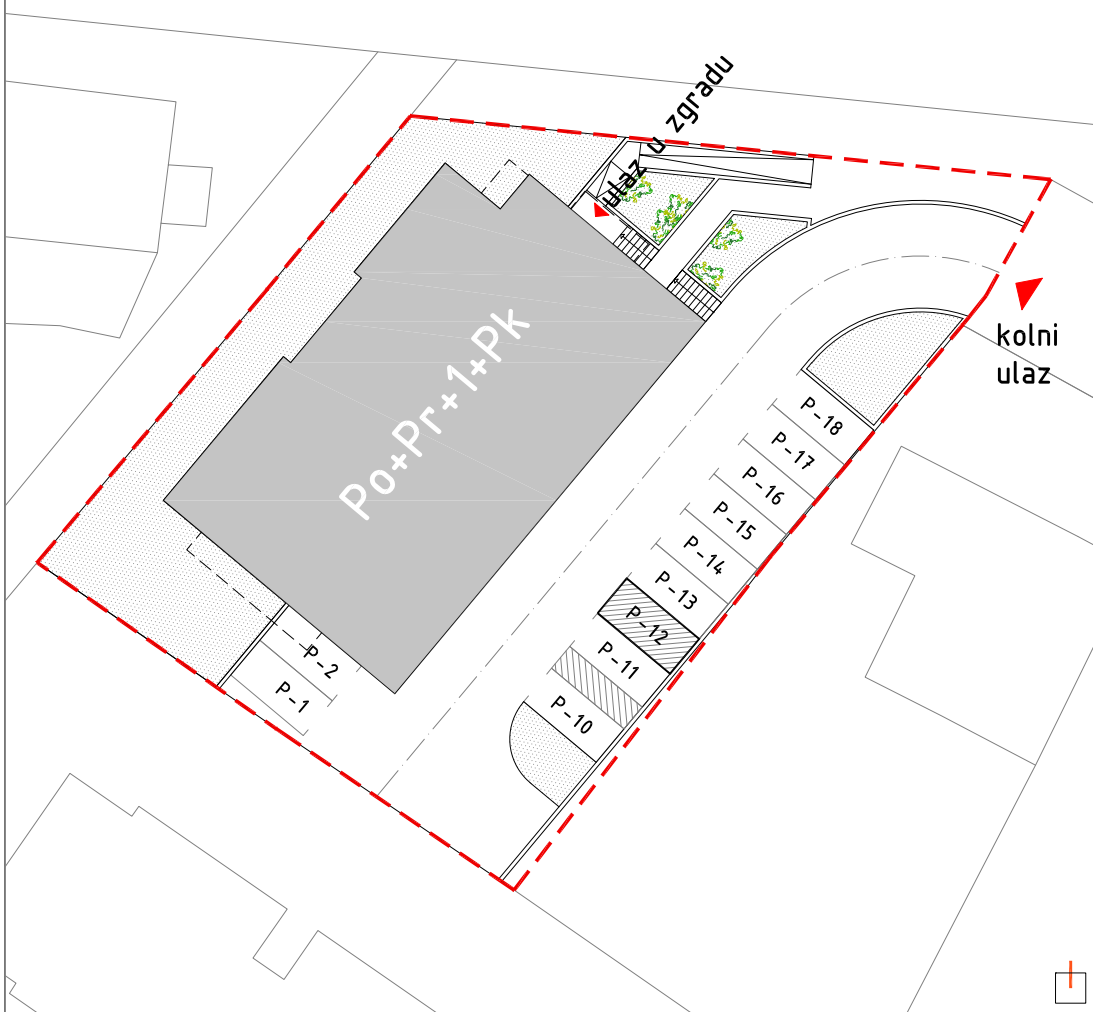
1. ulazni hodnik	3,53m ²
2. kuhinja+blag.	9,98m ²
3. dnevni boravak	10,20m ²
4. hodnik	3,08m ²
5. kupaonica	4,88m ²
6. spavaća soba 1	10,28m ²
7. spavaća soba 2	8,04m ²
8. loggia	3,96m ² x0,75 2,97m ²

STAN UKUPNO 52,96m²

spremište 2 5,80x0,75 4,35m²

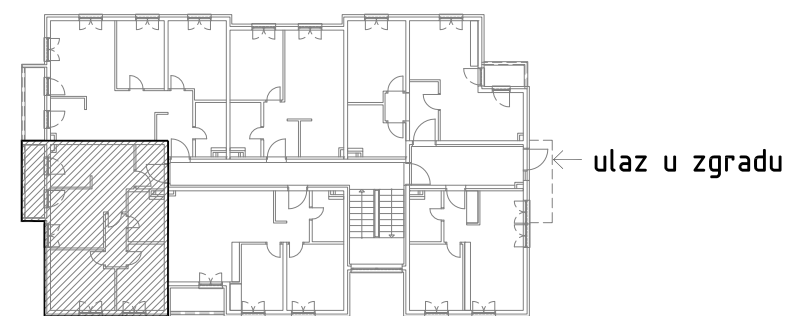
UKUPNO 57,31m²

SITUACIJA



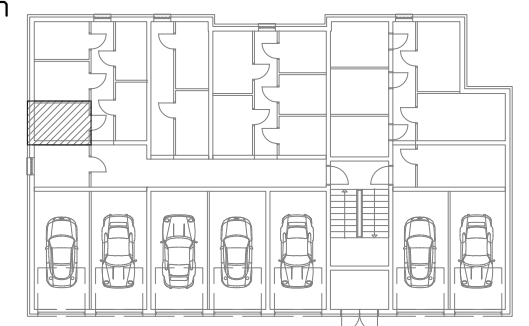
POLOŽAJ STANA U ZGRADI

prizemlje



POLOŽAJ SPREMIŠTA U ZGRADI

suterren



POLOŽAJ STANA NA PROČELJU

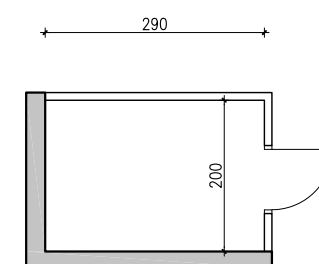
jugozapadno pročelje



jugoistočno pročelje



spremište 2



vanjsko parkirno mjesto
P-12 12,00m²

