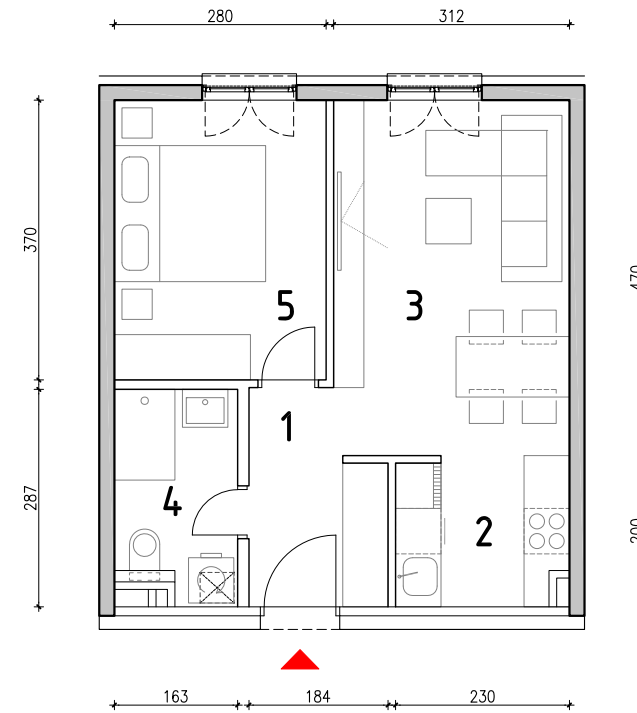


TLOCRT STANA\_mj 1:100



## STAMBENA ZGRADA

ULICA GRADA WIRGESA bb, SAMOBOR

### PRIZEMLJE - STAN S2

2-sobni

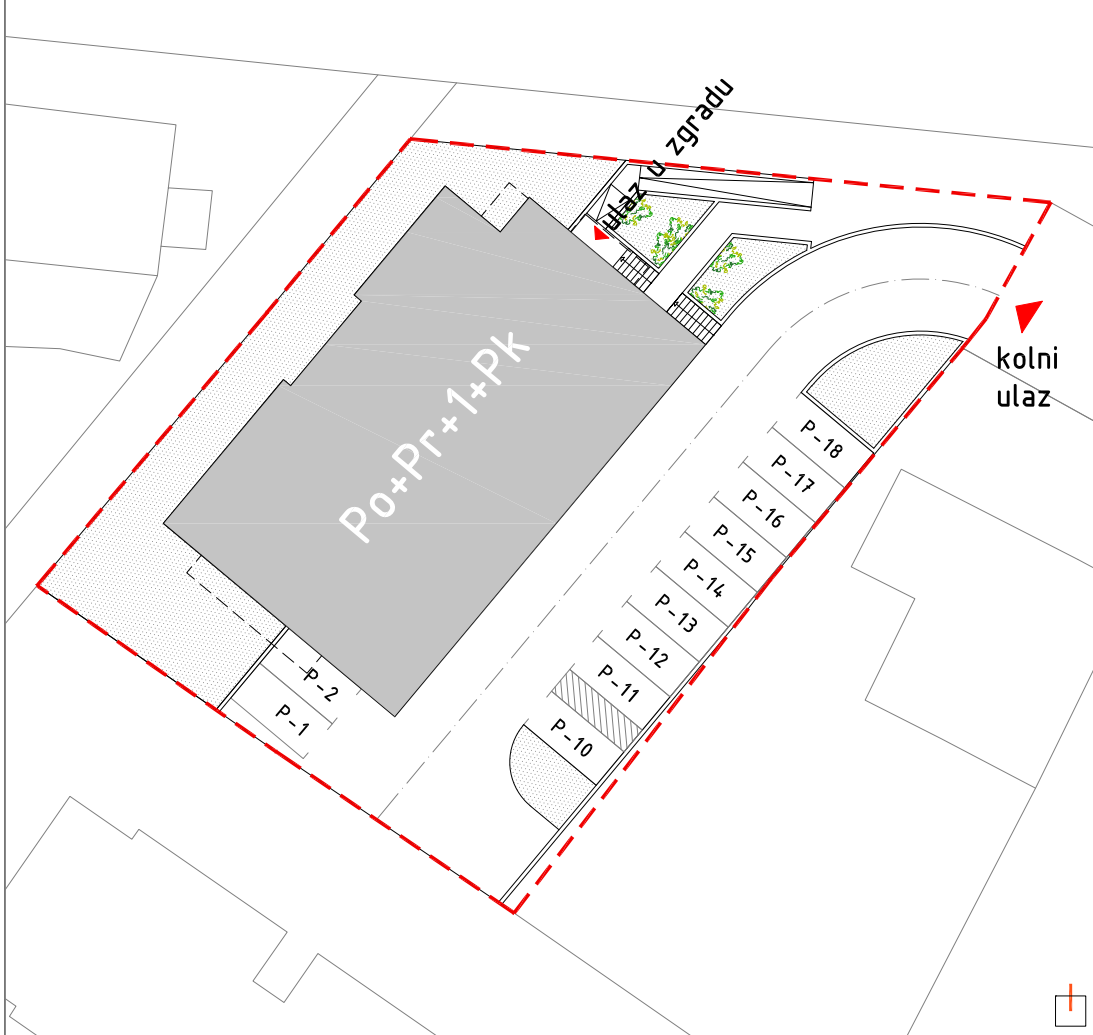
1. hodnik	4,63m <sup>2</sup>
2. kuhinja	4,41m <sup>2</sup>
3. blag.+dn.boravak	14,66m <sup>2</sup>
4. kupaonica	4,42m <sup>2</sup>
5. spavaća soba	10,36m <sup>2</sup>

**STAN UKUPNO 38,48m<sup>2</sup>**

spremište 11      5,17x0,75      3,88m<sup>2</sup>

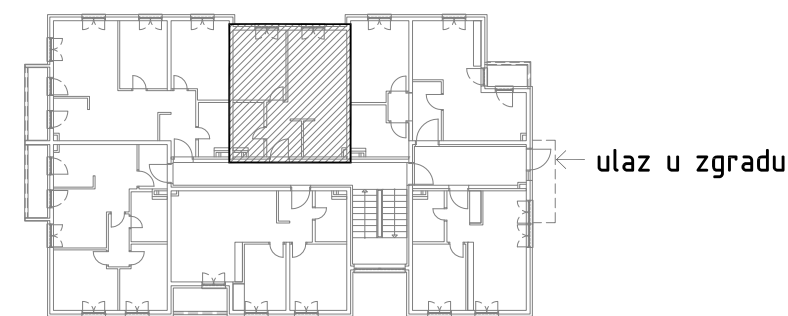
**UKUPNO 42,36m<sup>2</sup>**

SITUACIJA



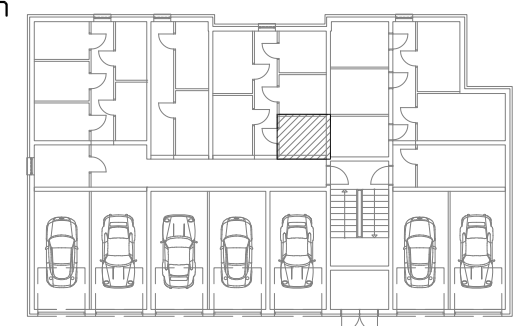
POLOŽAJ STANA U ZGRADI

prizemlje



POLOŽAJ SPREMIŠTA U ZGRADI

suteran



POLOŽAJ STANA NA PROČELJU

sjeverozapadno pročelje



spremište 11

