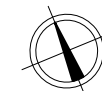
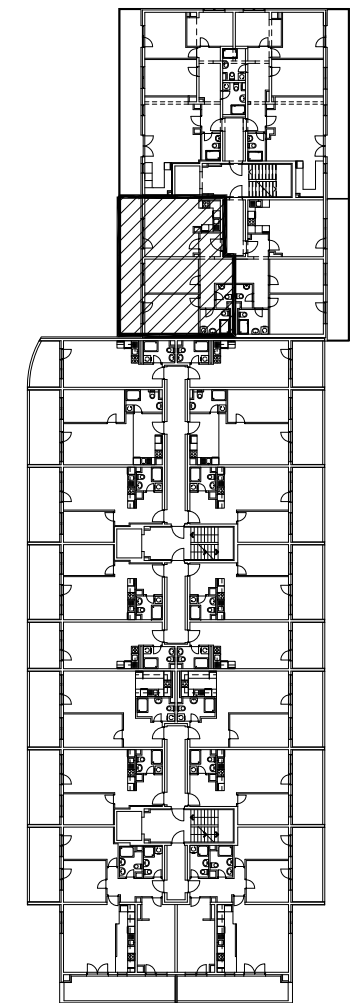


MJ 1:100



TLOCRT 6. KATA



POLOŽAJ STANA U ZGRADI

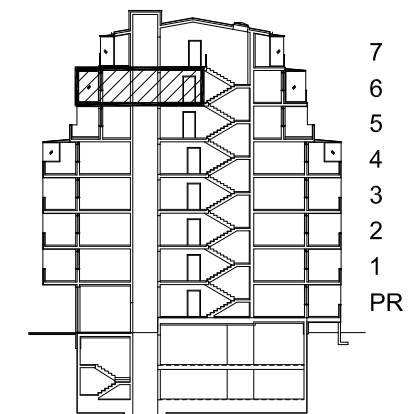


STAN M3C-47 - trosobni

6. KAT

PRESJEK

1. ULAZ		11.59	m ²
2. DNEVNI BORAVAK		21.01	m ²
3. KUPAONICA		4.80	m ²
4. KUHINJA		4.41	m ²
5. SOBA		12.33	m ²
6. SOBA		14.62	m ²
7. WC		2.54	m ²
8. LOGGIA	0.75x 22.65	16.99	m ²
SVEUKUPNO		88.29	m²



POLOŽAJ STANA U ZGRADI

STAN M3C-47 P=88.29 m²