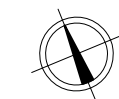
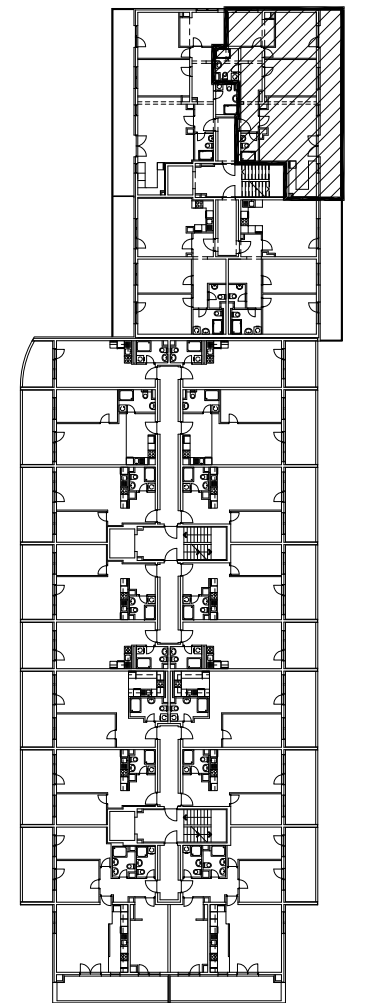
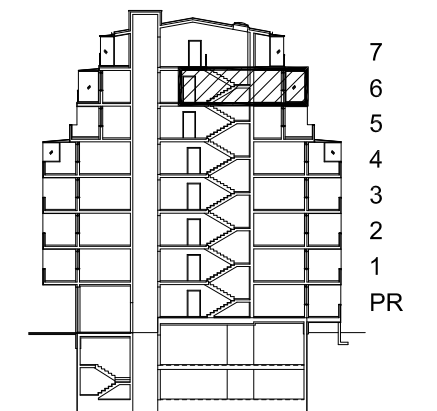


TLOCRT 6. KATA

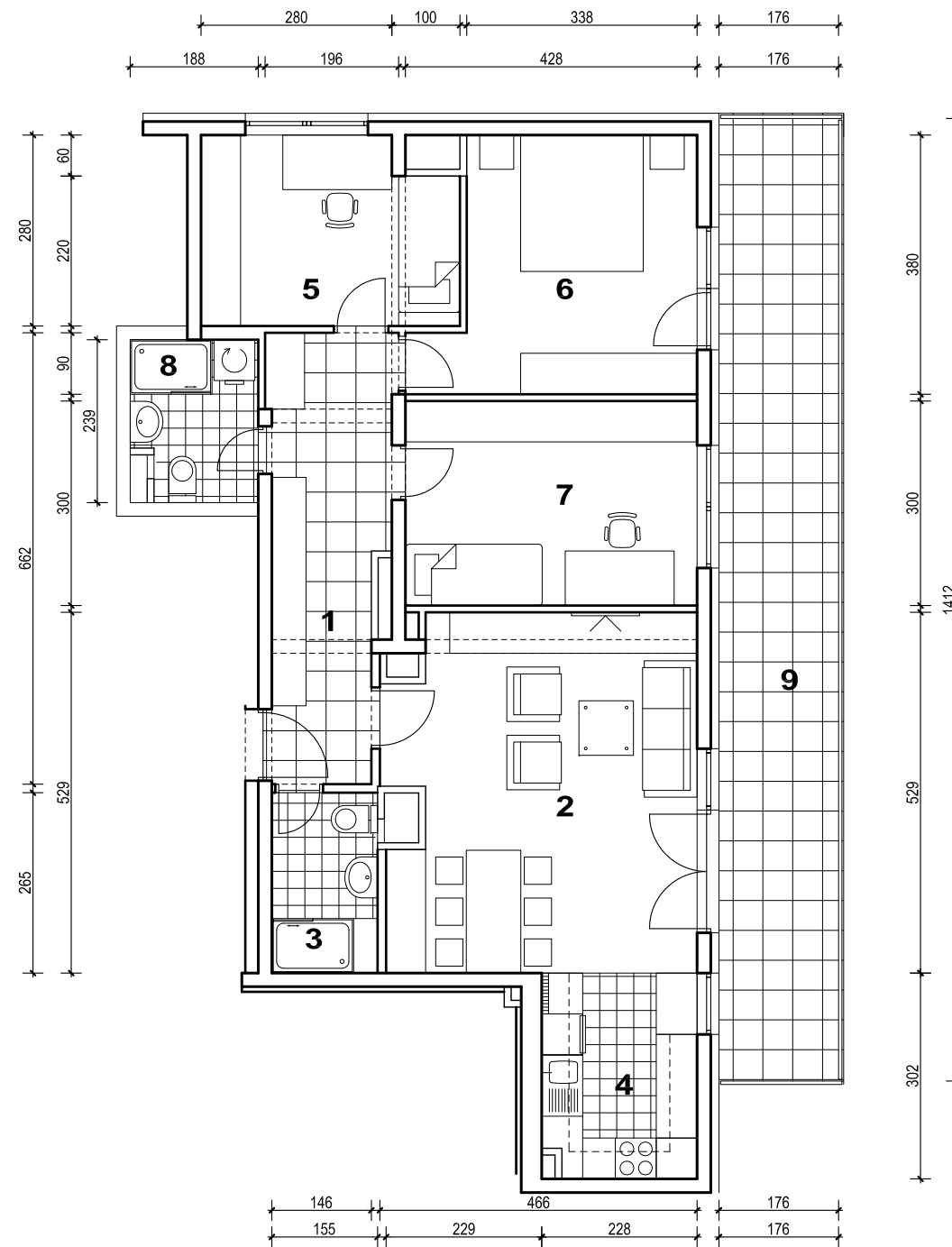


POLOŽAJ STANA U ZGRADI

PRESJEK



POLOŽAJ STANA U ZGRADI



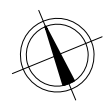
MJ 1:100

6. KAT

STAN M3C-45 - četverosobni

STAN M3C-45 P=104.13 m²

1. ULAZ		10.82	m ²
2. DNEVNI BORAVAK		23.14	m ²
3. KUPAONICA		4.09	m ²
4. KUHINJA		6.75	m ²
5. SOBA		10.04	m ²
6. SOBA		13.65	m ²
7. SOBA		12.84	m ²
8. KUPAONICA		4.21	m ²
9. LOGGIA	0.75x 24.78	18.59	m ²
SVEUKUPNO		104.13	m²



SITUACIJA

