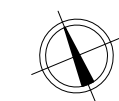
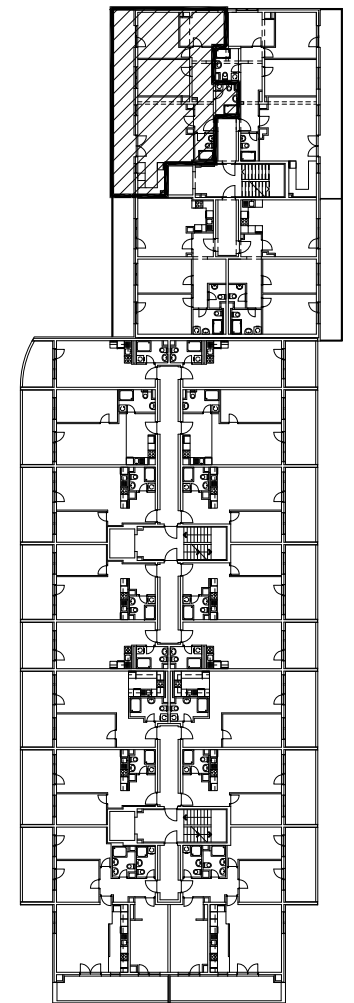
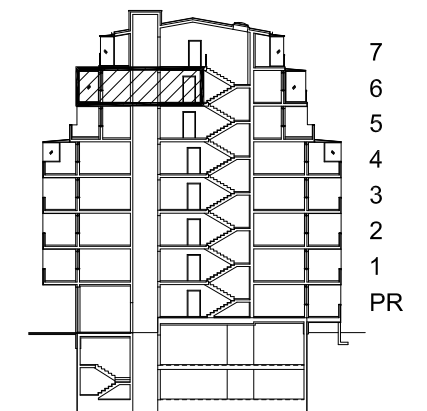


TLOCRT 6. KATA

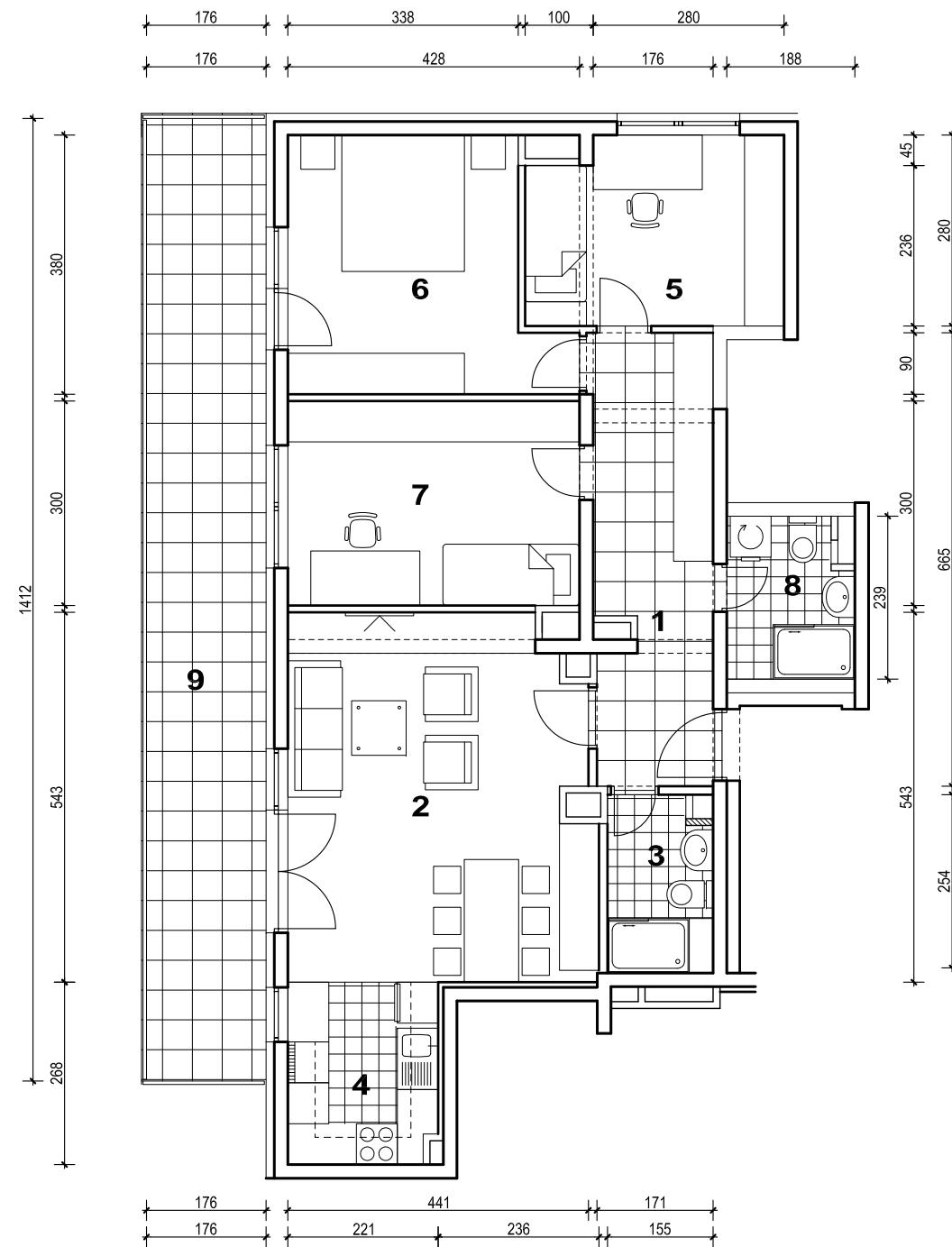


POLOŽAJ STANA U ZGRADI

PRESJEK



POLOŽAJ STANA U ZGRADI



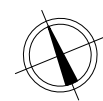
MJ 1:100

6. KAT

STAN M3C-44 - četverosobni

STAN M3C-44 P=103.46 m²

1. ULAZ		11.33	m ²
2. DNEVNI BORAVAK		23.14	m ²
3. KUPAONICA		3.87	m ²
4. KUHINJA		5.63	m ²
5. SOBA		10.20	m ²
6. SOBA		13.65	m ²
7. SOBA		12.84	m ²
8. KUPAONICA		4.21	m ²
9. LOGGIA	0.75x 24.78	18.59	m ²
SVEUKUPNO		103.46	m²



SITUACIJA

