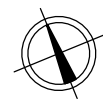
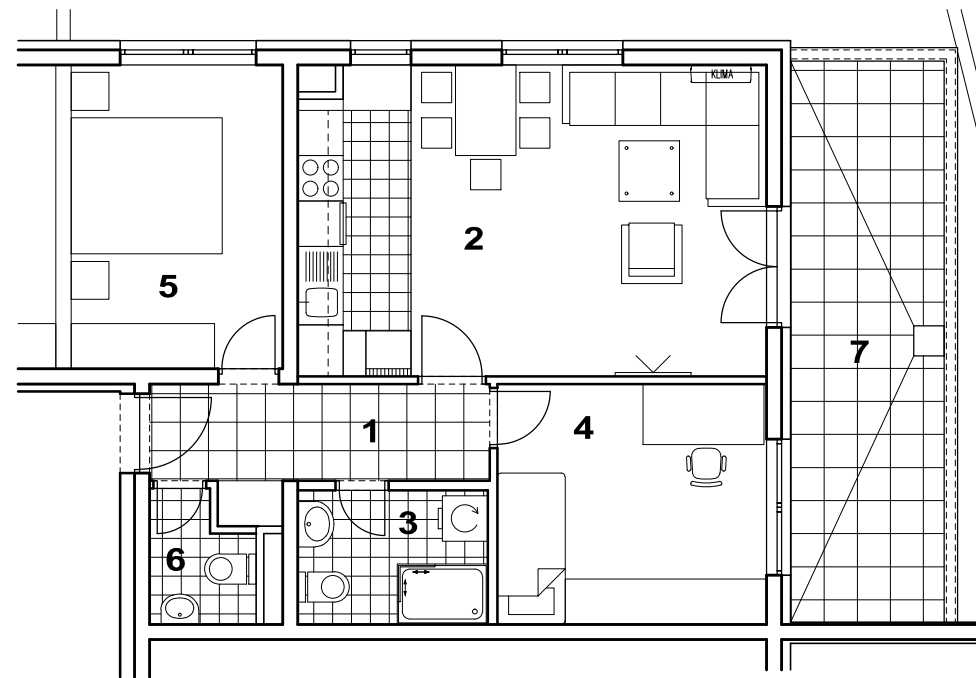
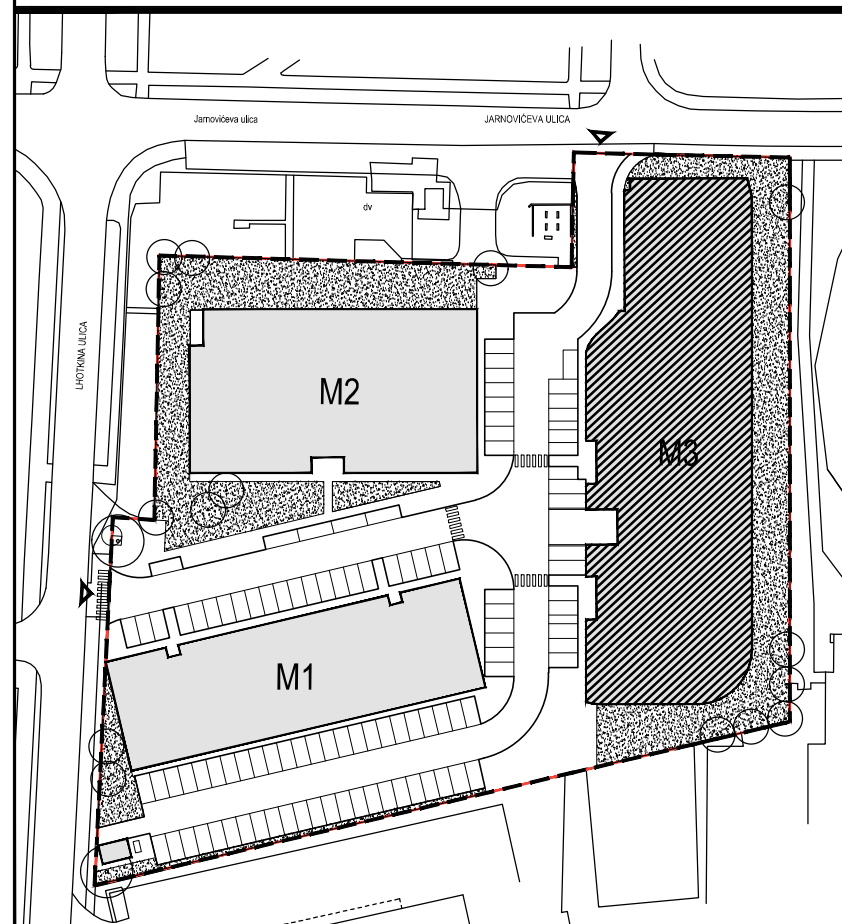




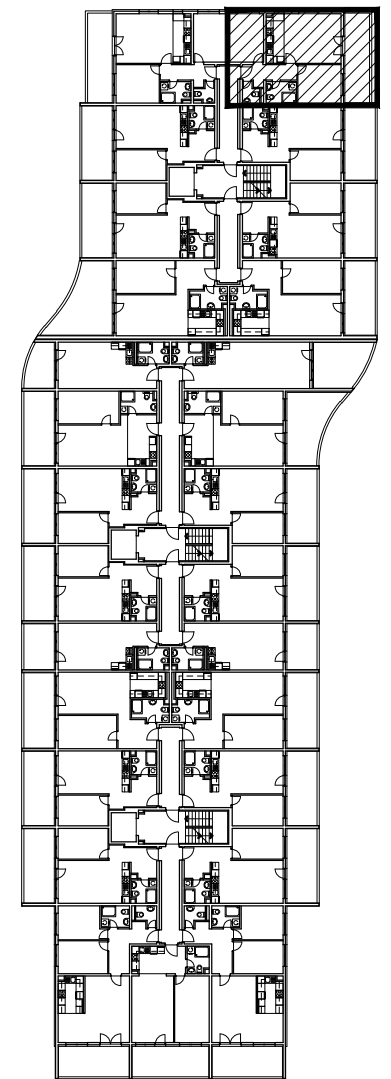
POLOŽAJ U NASELJU



SITUACIJA



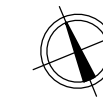
TLOCRT 3. KATA



MJ 1:100



POLOŽAJ STANA U ZGRADI

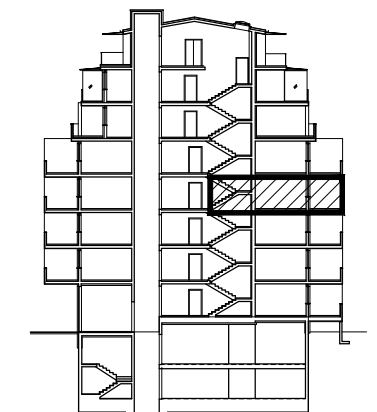


STAN M3C-26 - trosobni

3. KAT

PRESJEK

1. ULAZ		6.28	m ²
2. KUHINJA + DNEVNI BORAVAK		25.27	m ²
3. KUPAONICA		4.46	m ²
4. SOBA		11.26	m ²
5. SOBA		11.32	m ²
6. WC		2.17	m ²
7. BALKON	0.5x15.06	7.53	m ²
SVEUKUPNO		68.29	m²



POLOŽAJ STANA U ZGRADI

STAN M3C-26 P= 68.29 m²