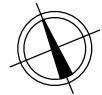
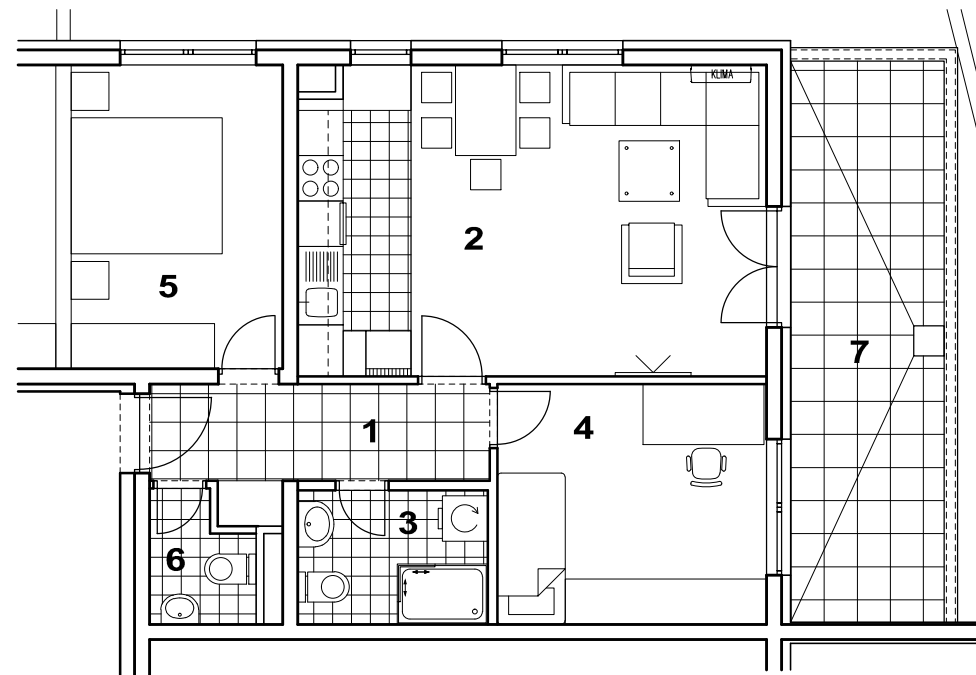
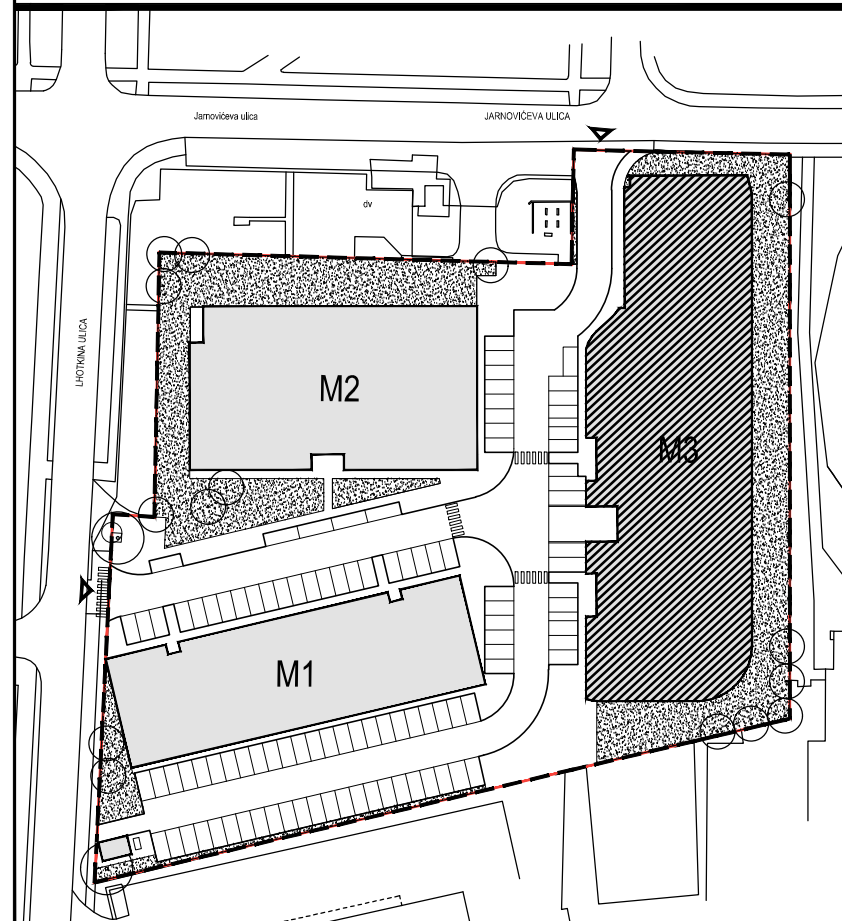




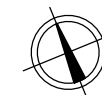
POLOŽAJ U NASELJU



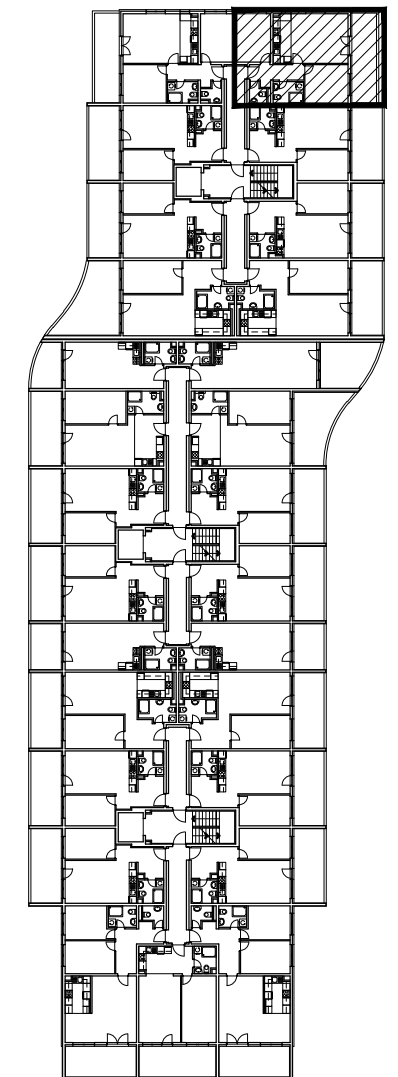
SITUACIJA



MJ 1:100



TLOCRT 2. KATA



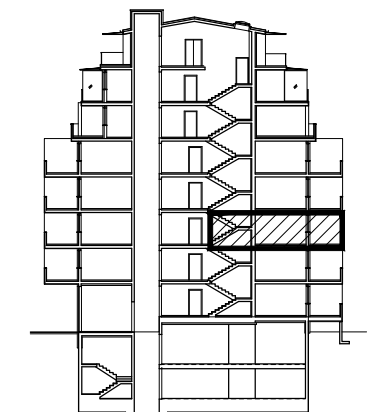
POLOŽAJ STANA U ZGRADI

STAN M3C-18 - trosobni

2. KAT

PRESJEK

1. ULAZ	6.28	m ²
2. KUHINJA + DNEVNI BORAVAK	25.27	m ²
3. KUPAONICA	4.46	m ²
4. SOBA	11.26	m ²
5. SOBA	11.32	m ²
6. WC	2.17	m ²
7. BALKON 0.5x15.06	7.53	m ²
SVEUKUPNO	68.29	m²



POLOŽAJ STANA U ZGRADI

STAN M3C-18 P= 68.29 m²