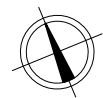
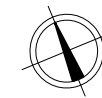
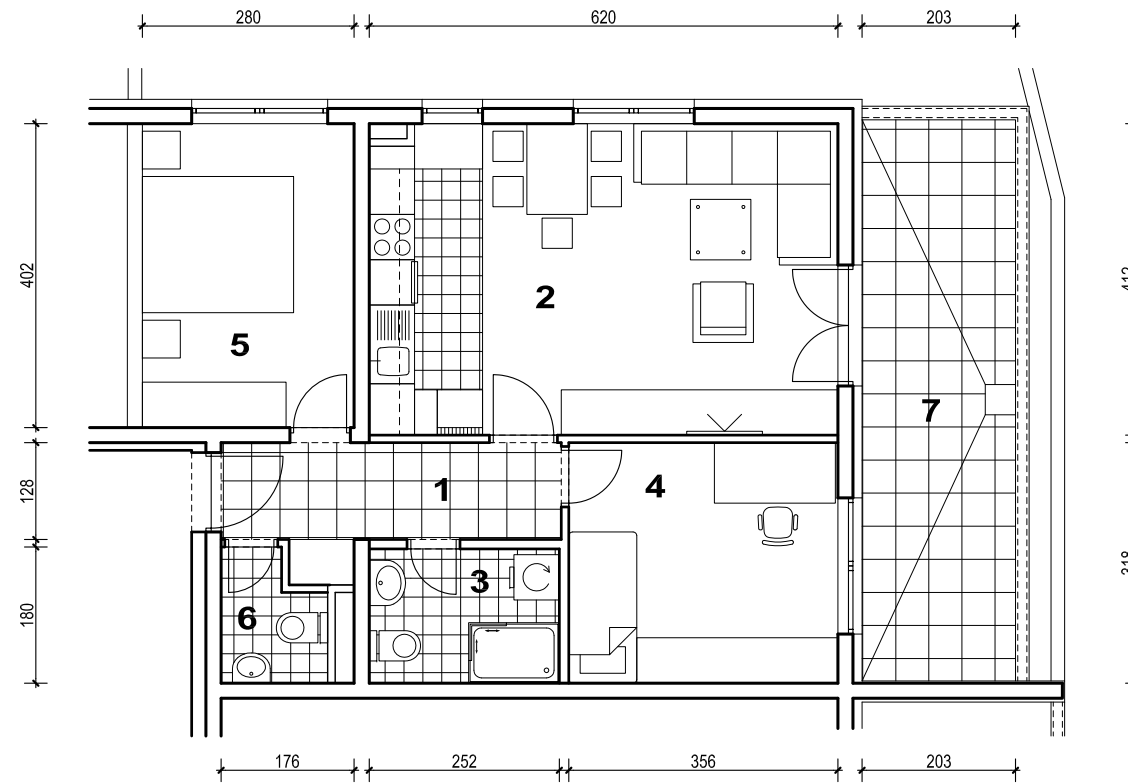
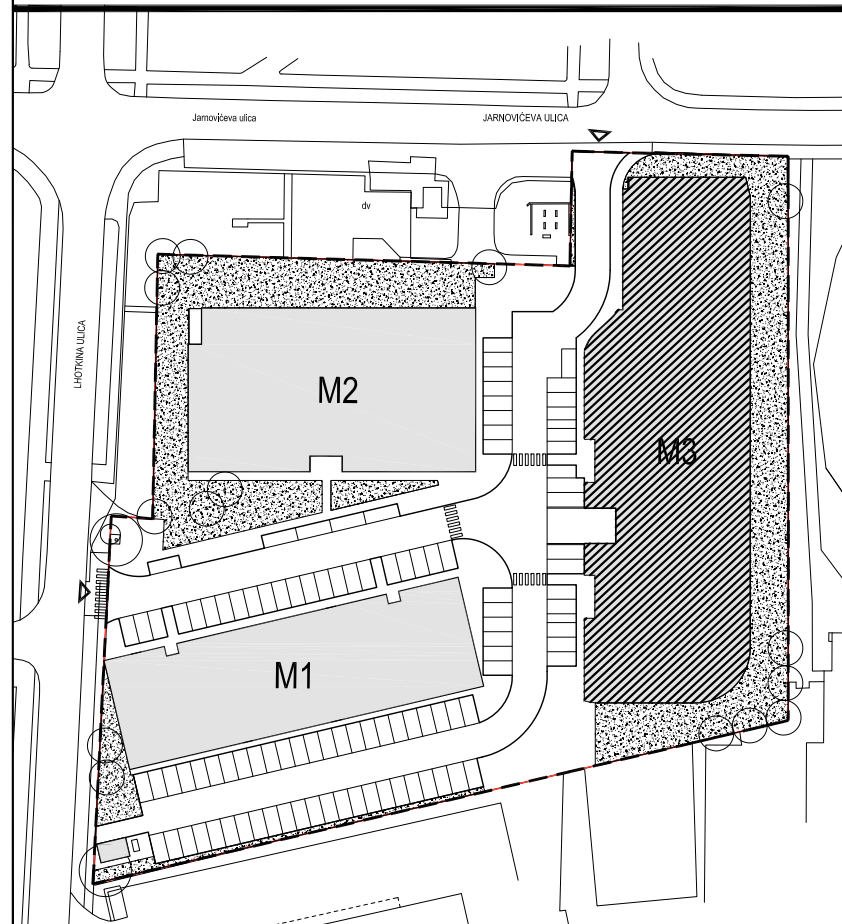




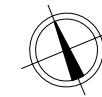
POLOŽAJ U NASELJU



SITUACIJA

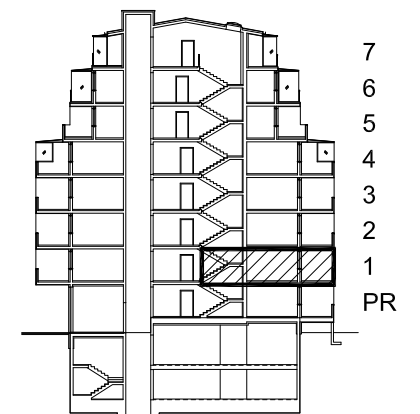


MJ 1:100



POLOŽAJ STANA U ZGRADI

PRESJEK



POLOŽAJ STANA U ZGRADI

STAN M3C-10 - trosobni

1. KAT

1. ULAZ		6.28	m ²
2. KUHINJA + DNEVNI BORAVAK		25.36	m ²
3. KUPAONICA		4.46	m ²
4. SOBA		11.26	m ²
5. SOBA		11.32	m ²
6. WC		2.17	m ²
7. BALKON	0.5x15.06	7.53	m ²
SVEUKUPNO		68.38	m²

STAN M3C-10 P= 68.38 m²