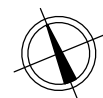


STAMBENA ZGRADA OZNAKE M3, JARNOVIĆEVA - LHOTKINA, PREČKO, ZAGREB

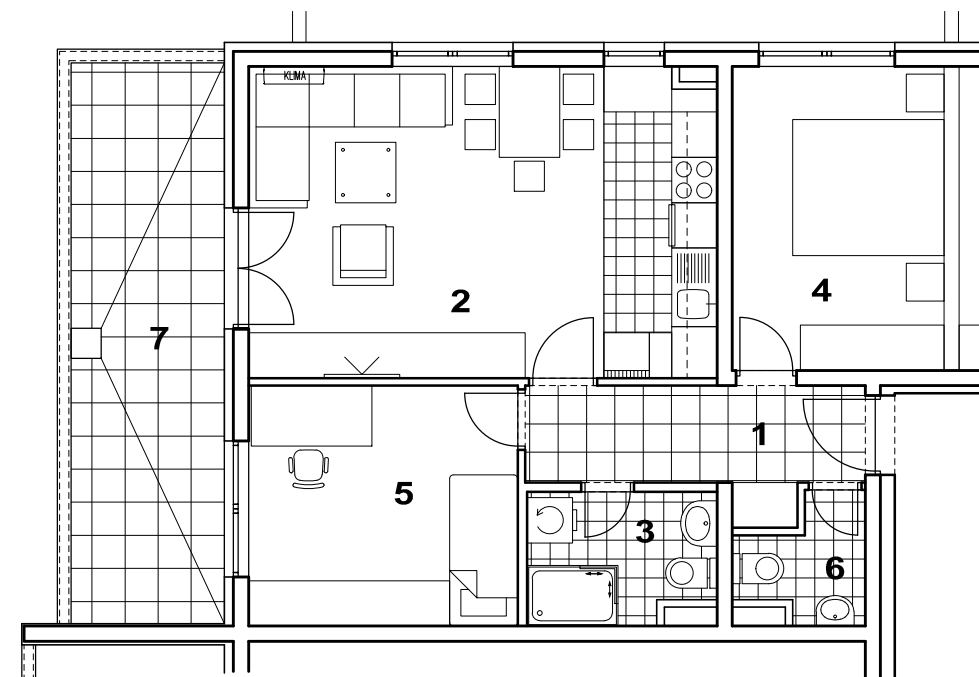
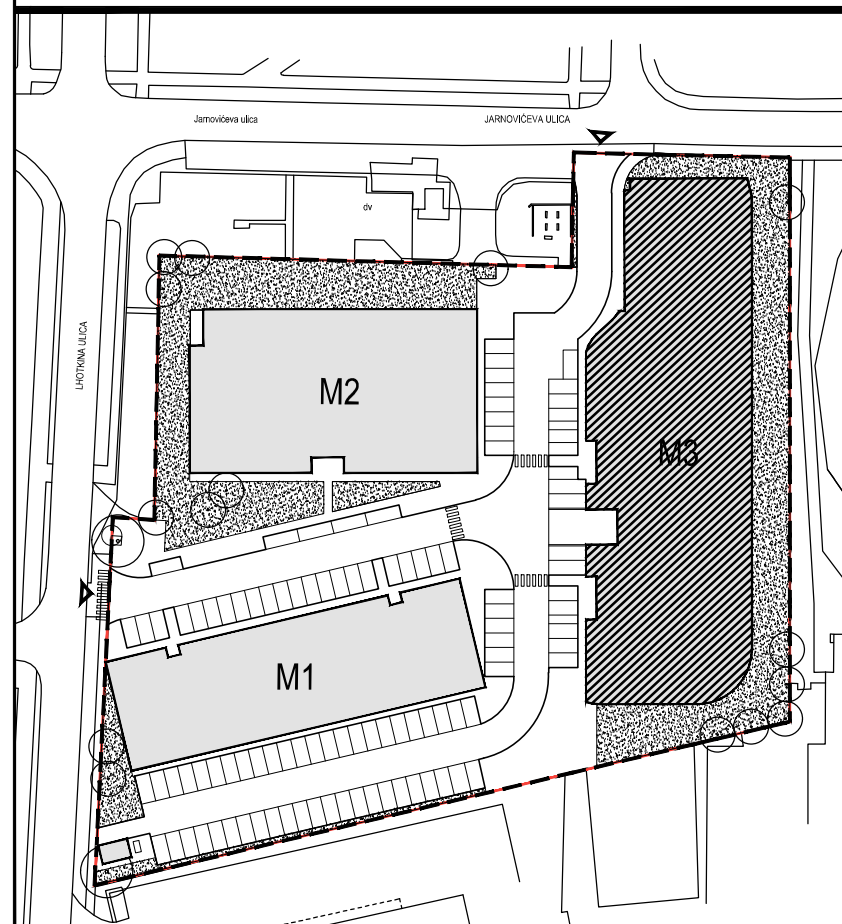
STAN M3C-9



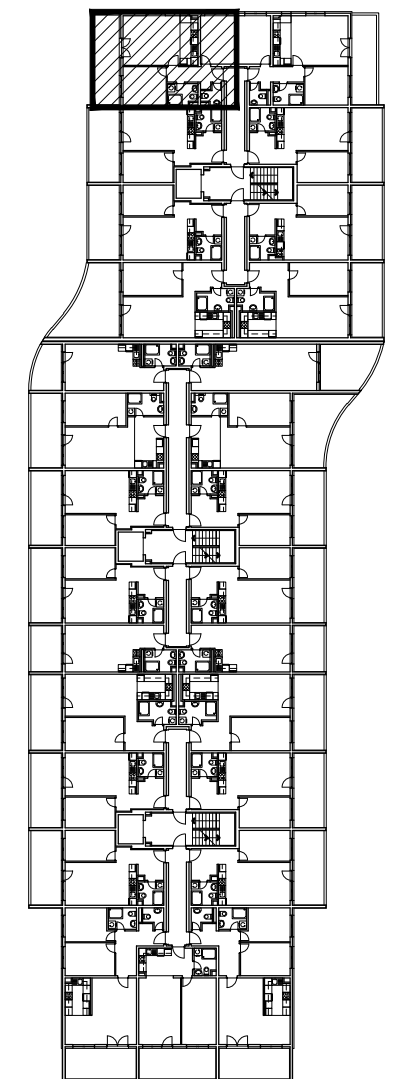
POLOŽAJ U NASELJU



SITUACIJA



TLOCRT 1. KATA



MJ 1:100

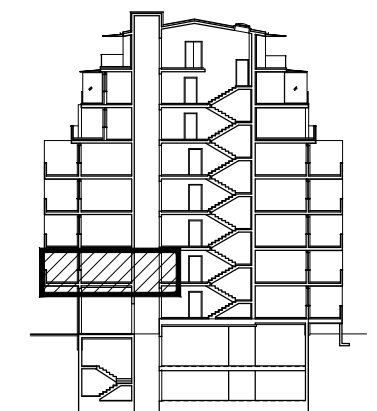
1. KAT

POLOŽAJ STANA U ZGRADI

STAN M3C-9 - trosobni

PRESJEK

1. ULAZ		6.28	m ²
2. KUHINJA + DNEVNI BORAVAK		25.36	m ²
3. KUPAONICA		4.18	m ²
4. SOBA		11.26	m ²
5. SOBA		11.32	m ²
6. WC		2.31	m ²
7. BALKON	0.5x15.06	7.53	m ²
SVEUKUPNO		68.24	m²



POLOŽAJ STANA U ZGRADI

STAN M3C-9 P= 68.24 m²