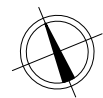
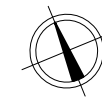
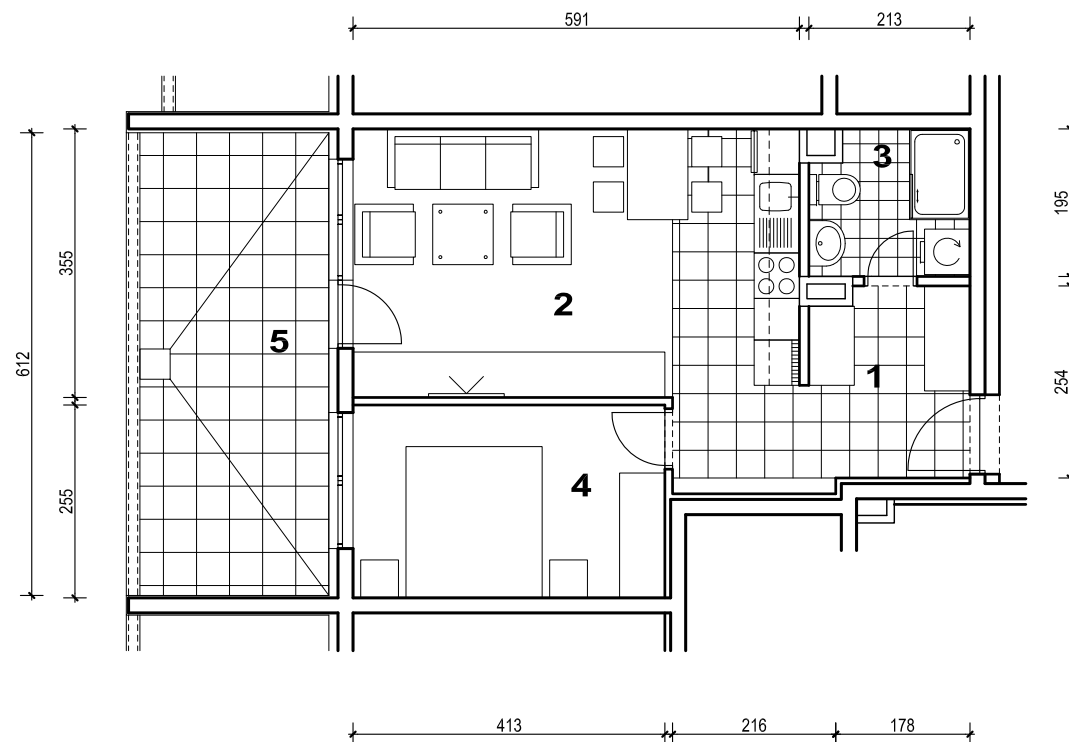
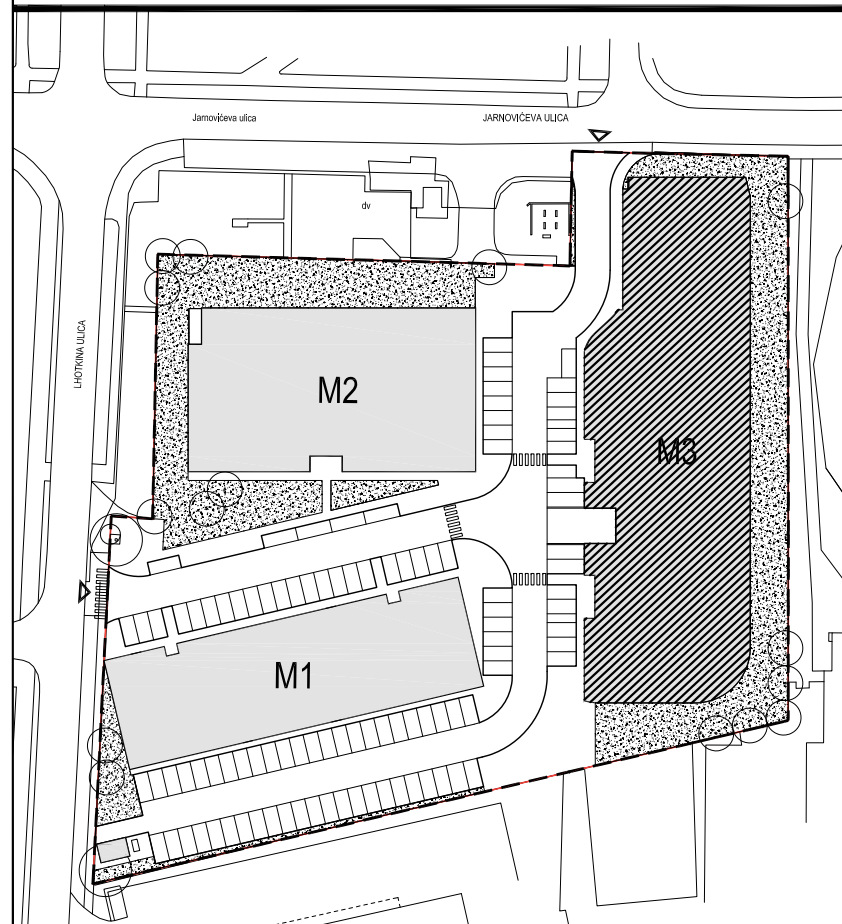




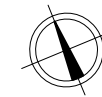
POLOŽAJ U NASELJU



SITUACIJA

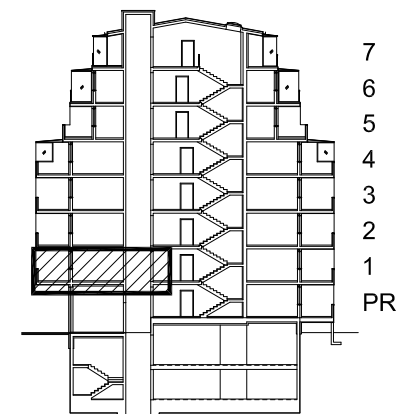


MJ 1:100



POLOŽAJ STANA U ZGRADI

PRESJEK



POLOŽAJ STANA U ZGRADI

STAN M3C-8 - dvosobni

1. KAT

1. ULAZ		7.65	m2
2. KUHINJA + DNEVNI BORAVAK		20.96	m2
3. KUPAONICA		3.95	m2
4. SOBA		10.52	m2
5. LOGGIA	0.75x15.30	11.48	m2
SVEUKUPNO		54.56	m2

STAN M3C-8 P= 54.56 m2