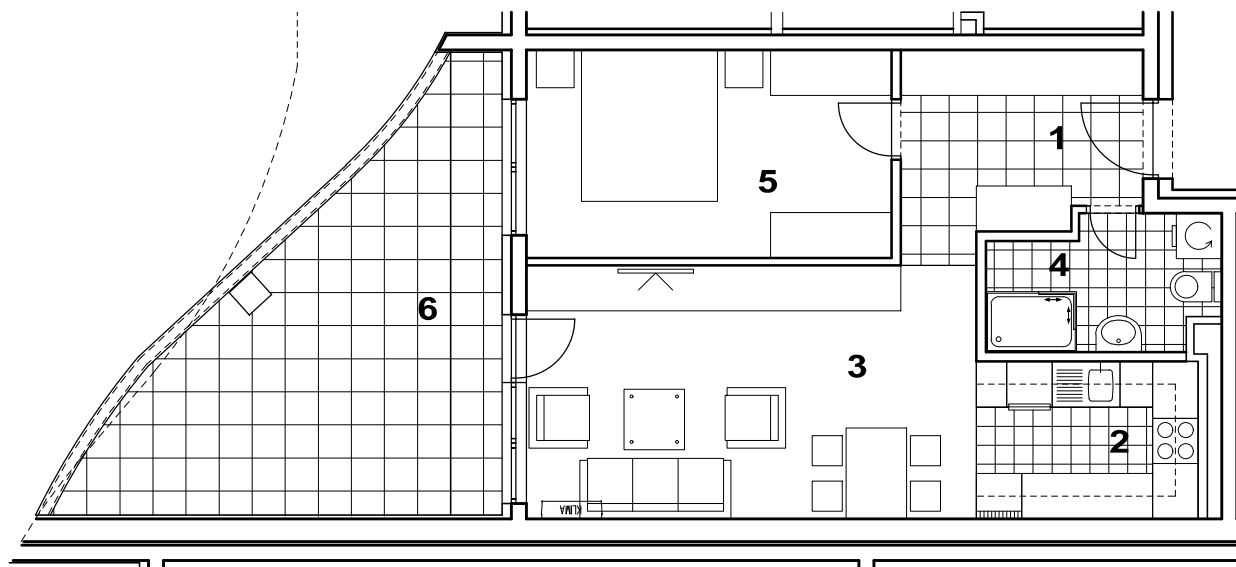
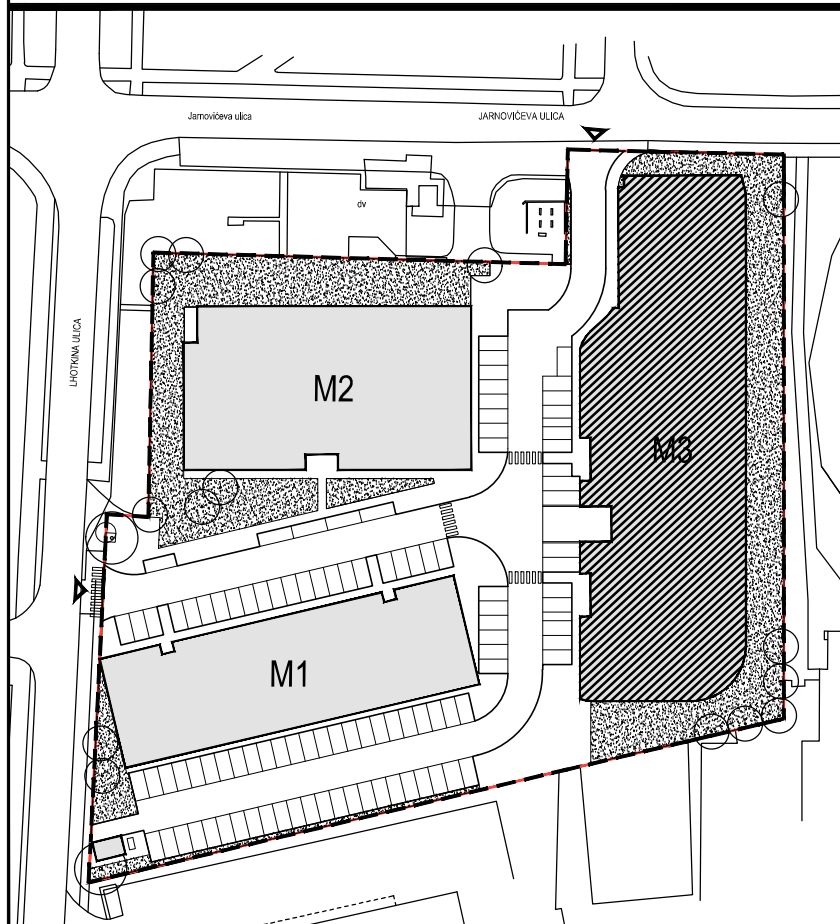




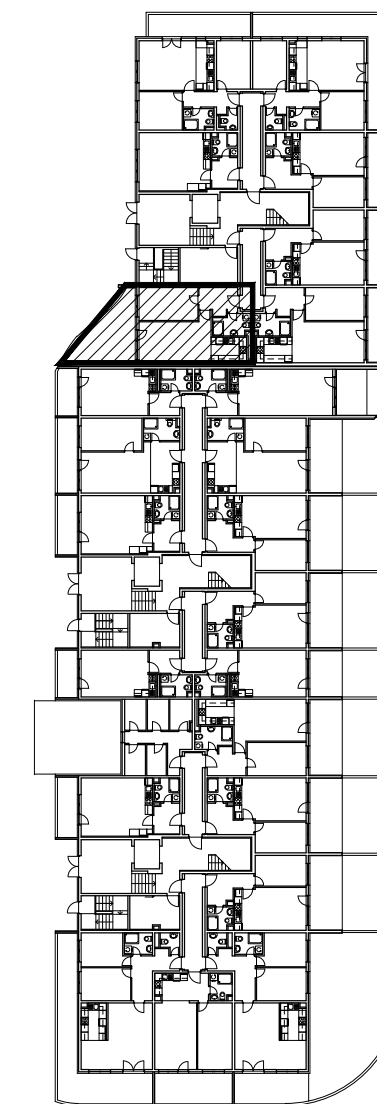
POLOŽAJ U NASELJU



SITUACIJA



TLOCRT PRIZEMLJA



POLOŽAJ STANA I SPREMIŠTA U ZGRADI

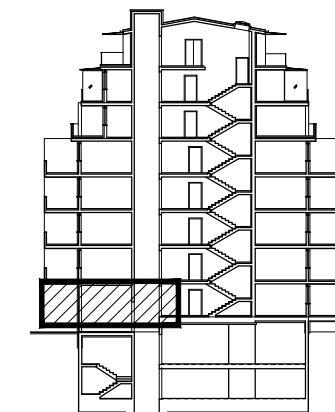
MJ 1:100

STAN M3C-7 - dvosobni

PRIZEMLJE

PRESJEK

1. ULAZ		7.82	m ²
2. KUHINJA		6.09	m ²
3. DNEVNI BORAVAK		19.95	m ²
4. KUPAONICA		5.06	m ²
5. SOBA		13.28	m ²
6. LOGGIA/BALKON	0.75x4.17 + 0.5x16.80	11.53	m ²
SVEUKUPNO		63.73	m²



POLOŽAJ STANA U ZGRADI

STAN M3C-7 P= 63.73 m²