

STAMBENA ZGRADA OZNAKE M3, JARNOVIĆEVA - LHOTKINA, PREČKO, ZAGREB

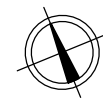
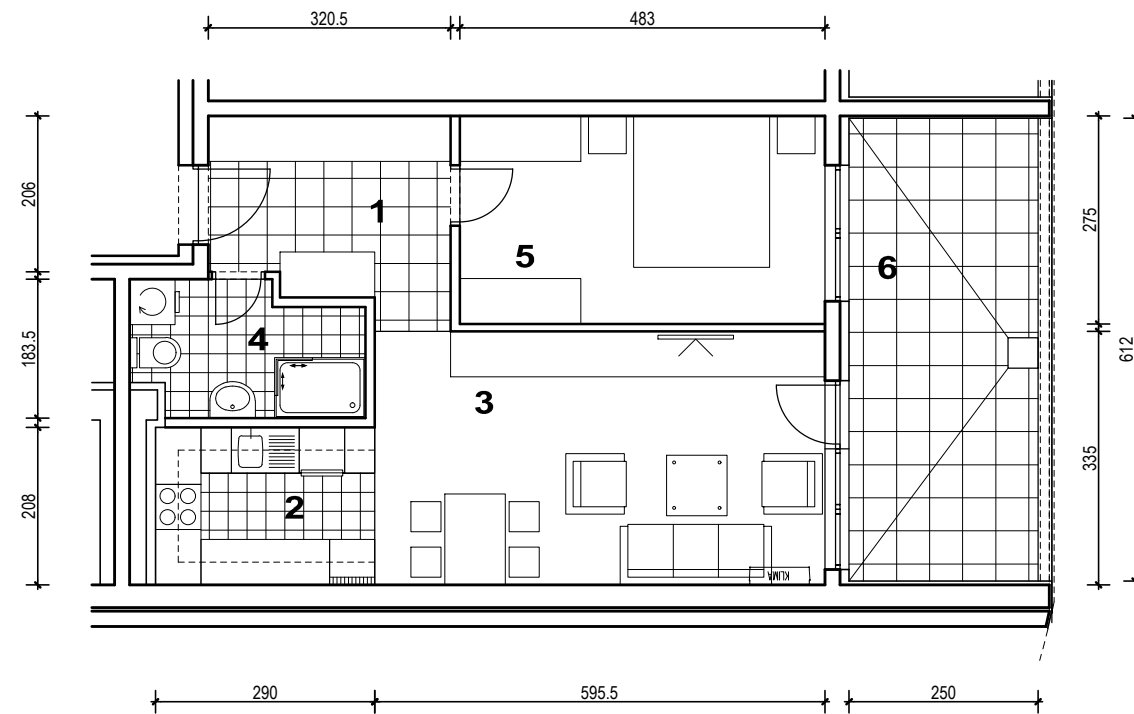
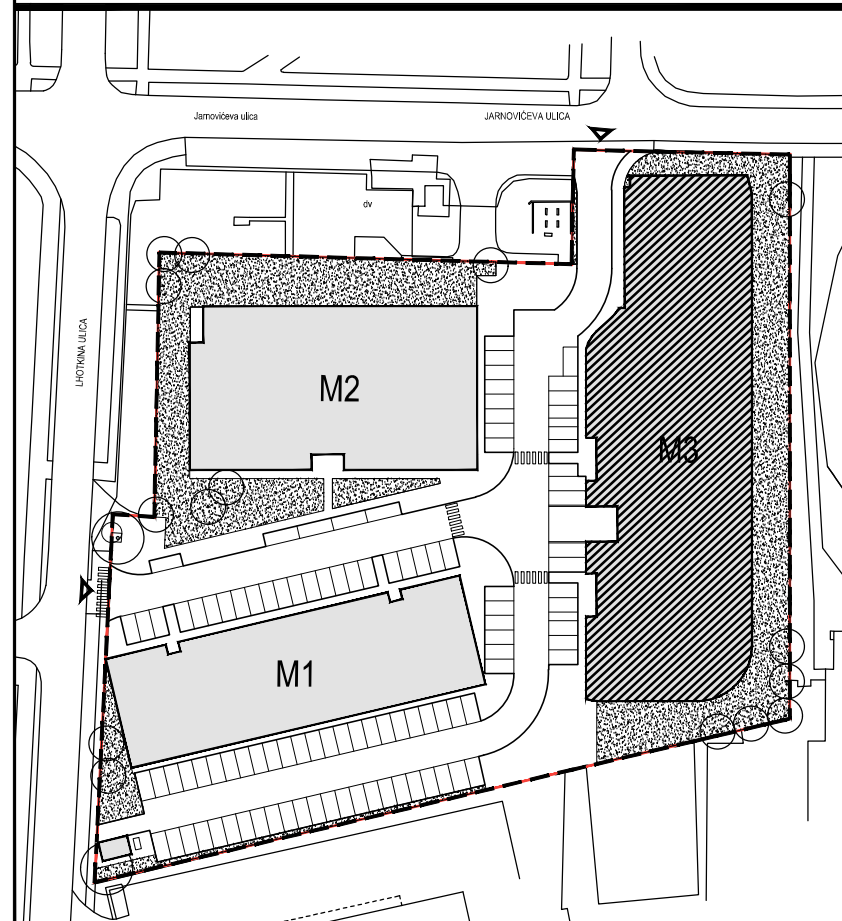
STAN M3C-6



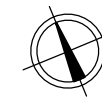
POLOŽAJ U NASELJU



SITUACIJA

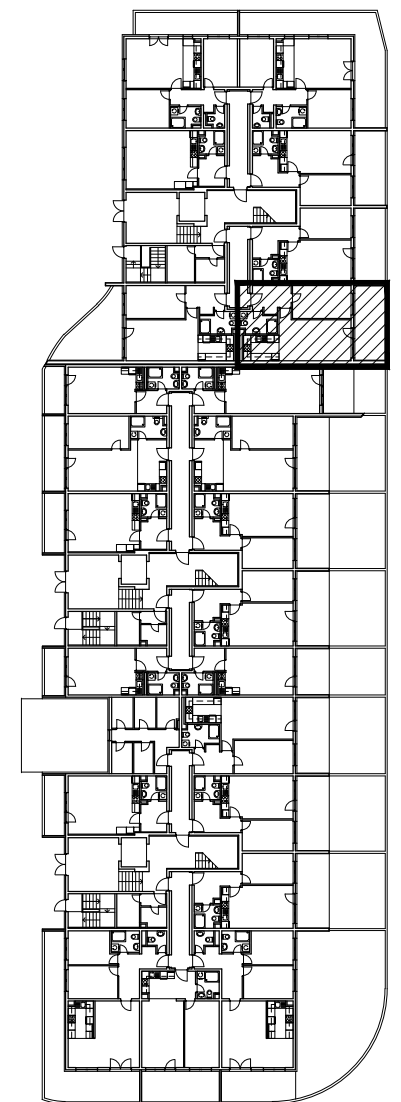


MJ 1:100



POLOŽAJ STANA I SPREMIŠTA U ZGRADI

TLOCRT PRIZEMLJA

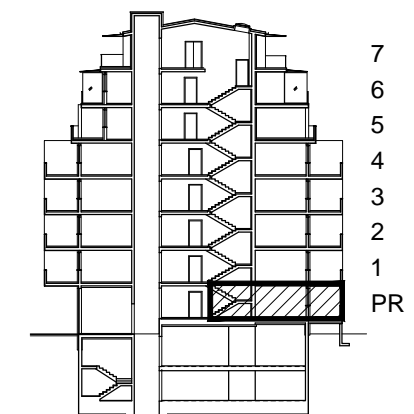


STAN M3C-6 - dvosobni

PRIZEMLJE

PRESJEK

1. ULAZ		7.82	m ²
2. KUHINJA		6.03	m ²
3. DNEVNI BORAVAK		19.95	m ²
4. KUPAONICA		5.06	m ²
5. SOBA		13.28	m ²
6. LOGGIA	0.75x15.30	11.48	m ²
SVEUKUPNO		63.62	m²



POLOŽAJ STANA U ZGRADI

STAN M3C-6 P= 63.62 m²