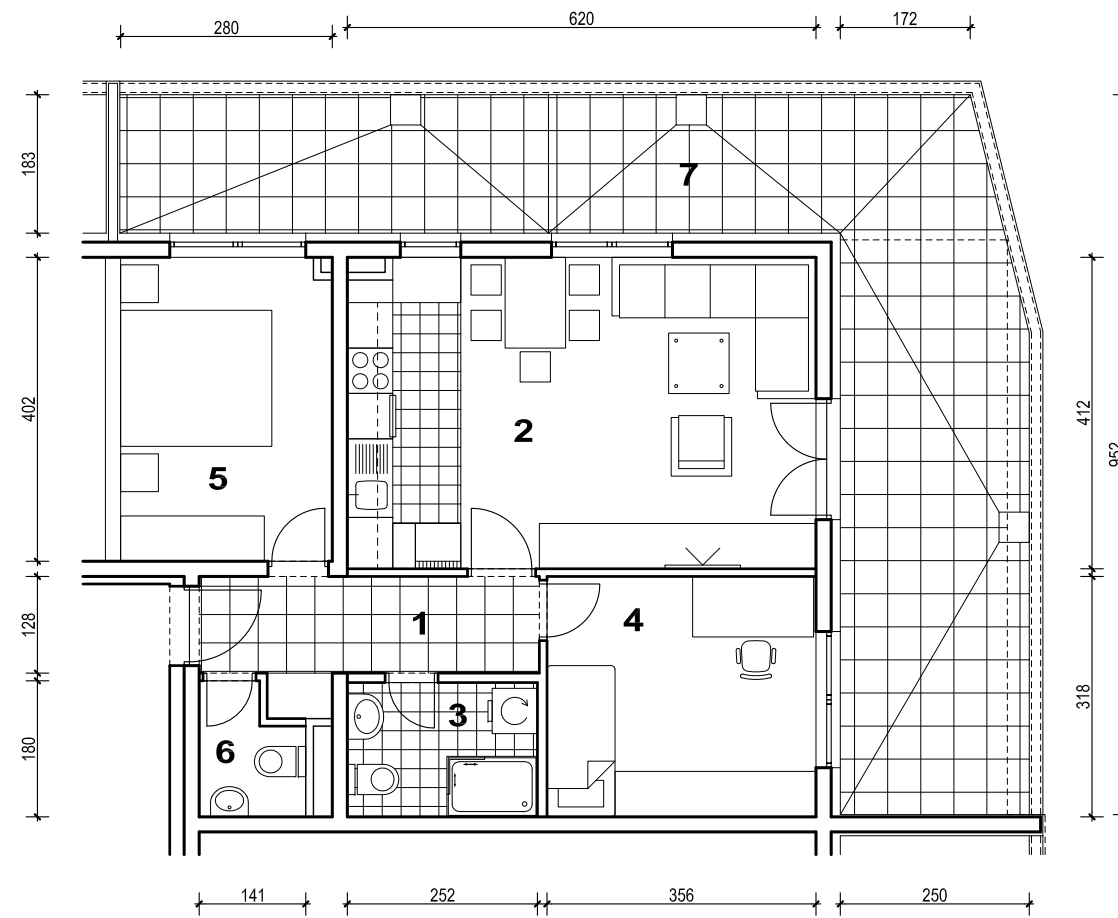
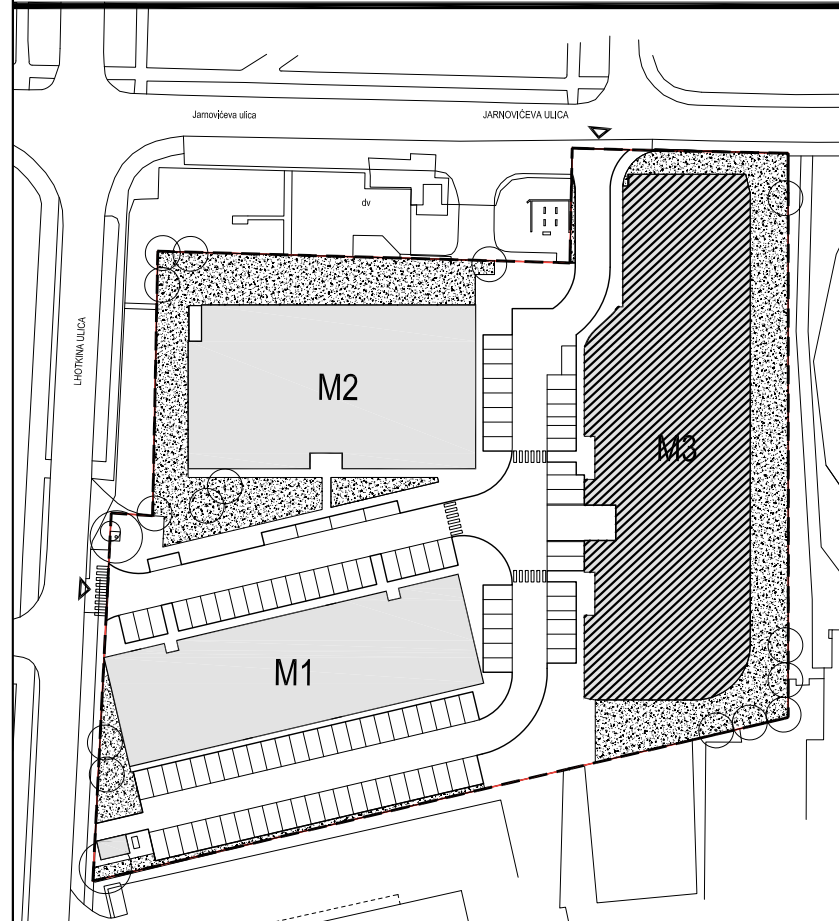




POLOŽAJ U NASELJU



SITUACIJA



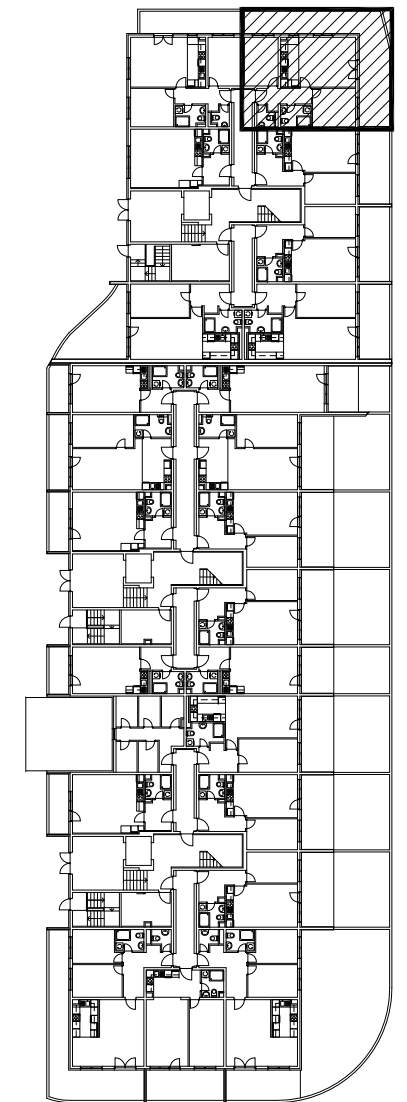
MJ 1:100

STAN M3C-3 - trosobni

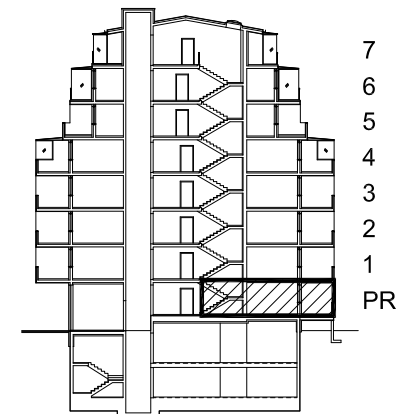
PRIZEMLJE

1. ULAZ		6.28	m <sup>2</sup>
2. KUHINJA + DNEVNI BORAVAK		25.36	m <sup>2</sup>
3. KUPAONICA		4.46	m <sup>2</sup>
4. SOBA		11.18	m <sup>2</sup>
5. SOBA		11.32	m <sup>2</sup>
6. WC		2.17	m <sup>2</sup>
7. BALKON/TERASA	0.5x16.80 + 0.25x23.22	14.21	m <sup>2</sup>
<b>SVEUKUPNO</b>		<b>74.98</b>	<b>m<sup>2</sup></b>

TLOCRT PRIZEMLJA



POLOŽAJ STANA I SPREMIŠTA



STAN M3C-3 P= 74.98 m<sup>2</sup>