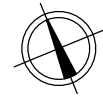
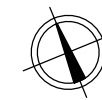
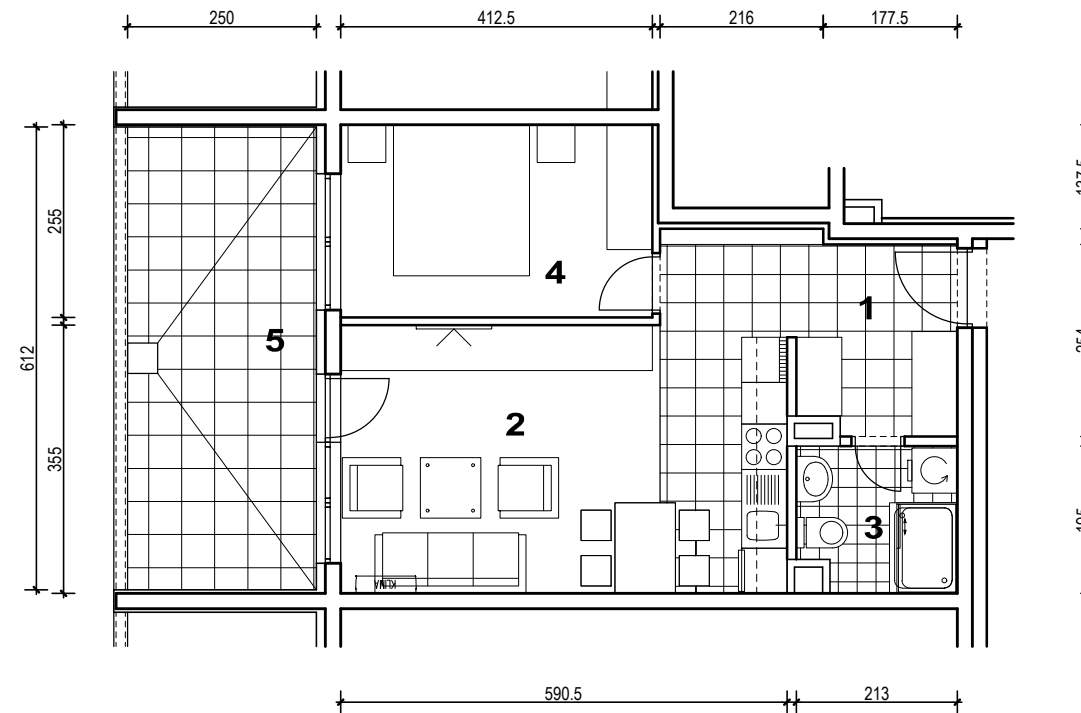
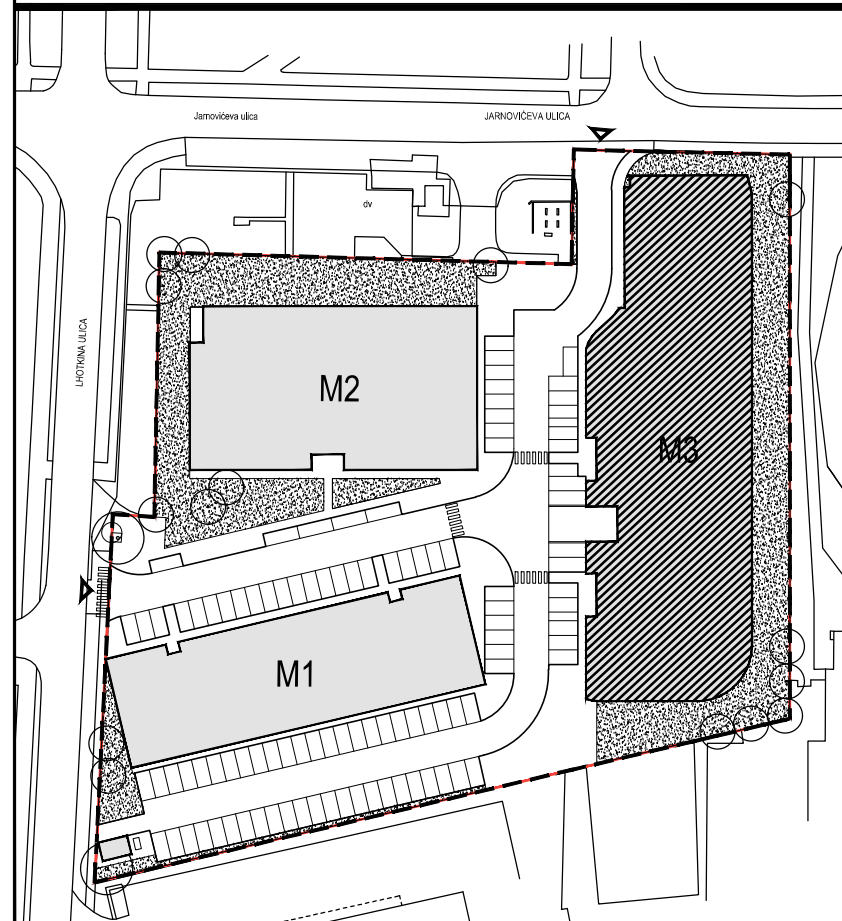




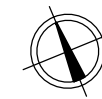
POLOŽAJ U NASELJU



SITUACIJA

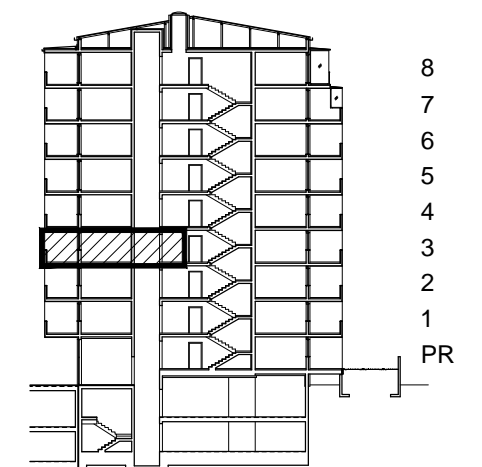


MJ 1:100



POLOŽAJ STANA U ZGRADI

PRESJEK



POLOŽAJ STANA U ZGRADI

STAN M3B-39 - dvosobni

3. KAT

1. ULAZ		7.65	m ²
2. KUHINJA + DNEVNI BORAVAK		20.96	m ²
3. KUPAONICA		3.95	m ²
4. SOBA		10.52	m ²
5. LOGGIA	0.75x15.30	11.48	m ²
SVEUKUPNO		54.56	m²

STAN M3B-39 P= 54.56 m²