

STAMBENA ZGRADA OZNAKE M3, JARNOVIĆEVA - LHOTKINA, PREČKO, ZAGREB

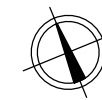
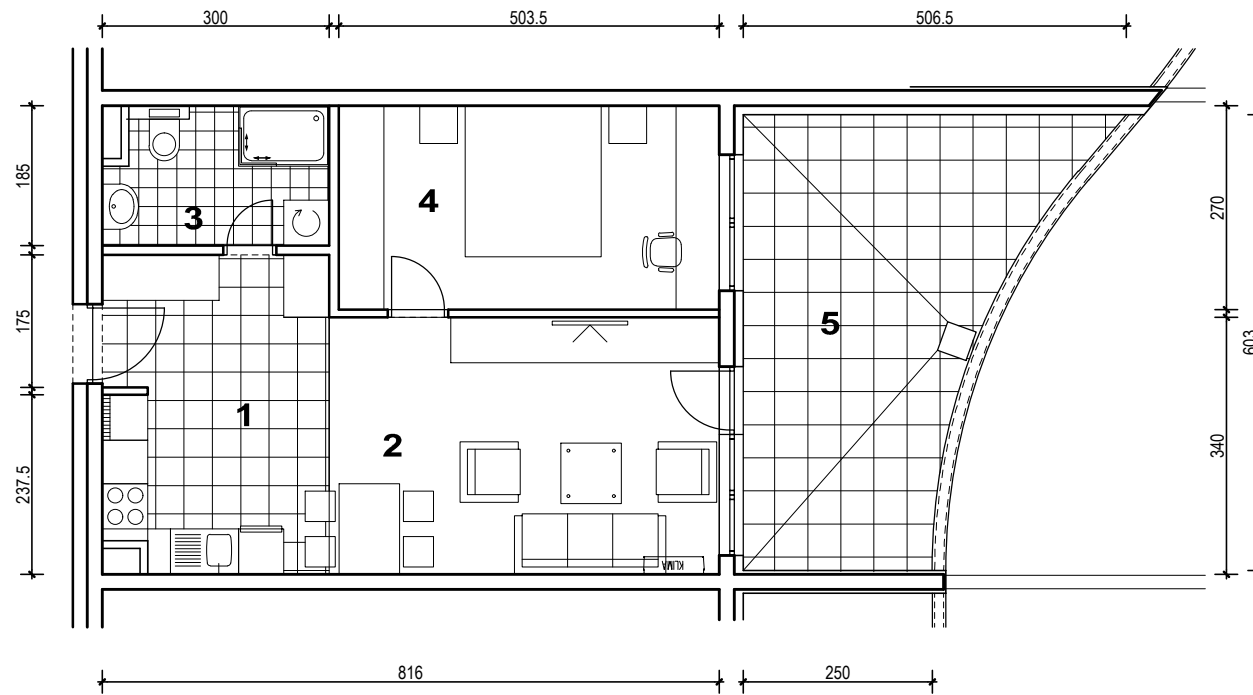
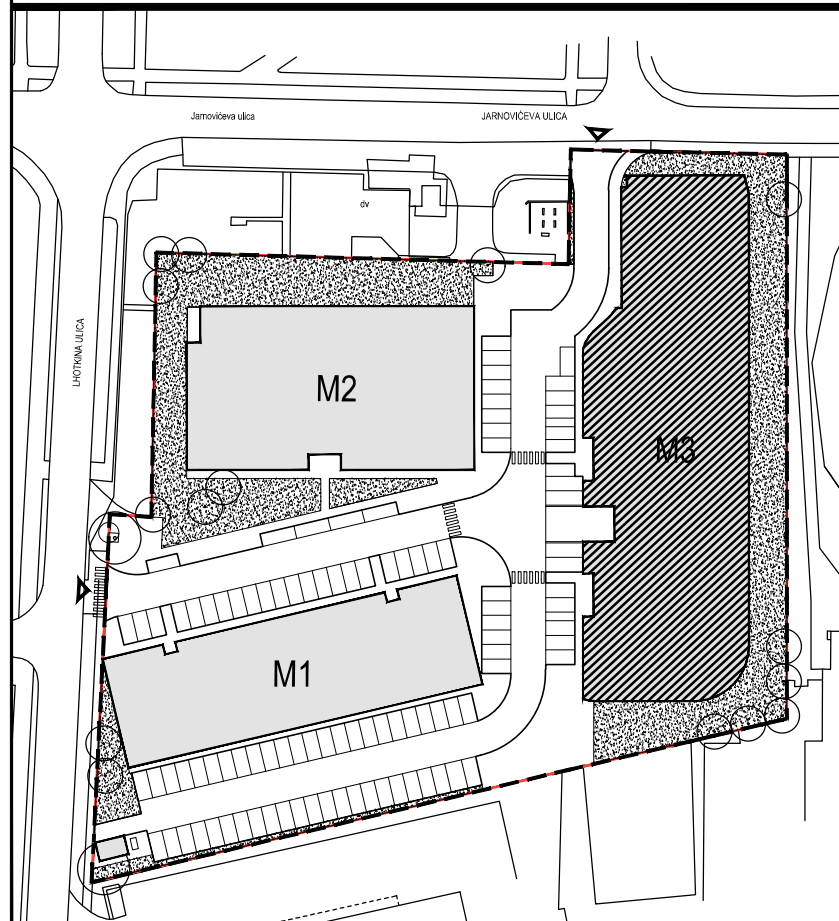
STAN M3B-34



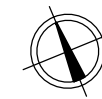
POLOŽAJ U NASELJU



SITUACIJA

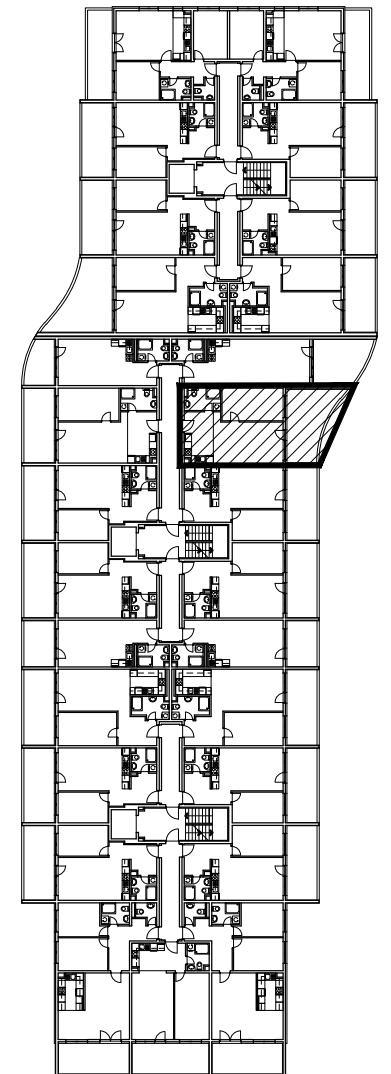


MJ 1:100



PRESJEK

TLOCRT 3. KATA

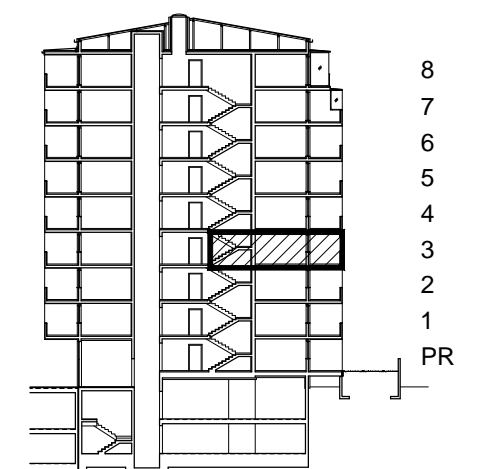


POLOŽAJ STANA U ZGRADI

STAN M3B-34 - dvosobni

3. KAT

1. ULAZ + KUHINJA	12.35	m ²
2. DNEVNI BORAVAK	17.54	m ²
3. KUPAONICA	5.27	m ²
4. SOBA	13.59	m ²
5. LOGGIA/BALKON	0.75x15.07+0,5x4.90	13.75 m ²
SVEUKUPNO	62.50	m²



POLOŽAJ STANA U ZGRADI

STAN M3B-34 P= 62.50 m²