

# STAMBENA ZGRADA OZNAKE M3, JARNOVIĆEVA - LHOTKINA, PREČKO, ZAGREB

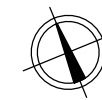
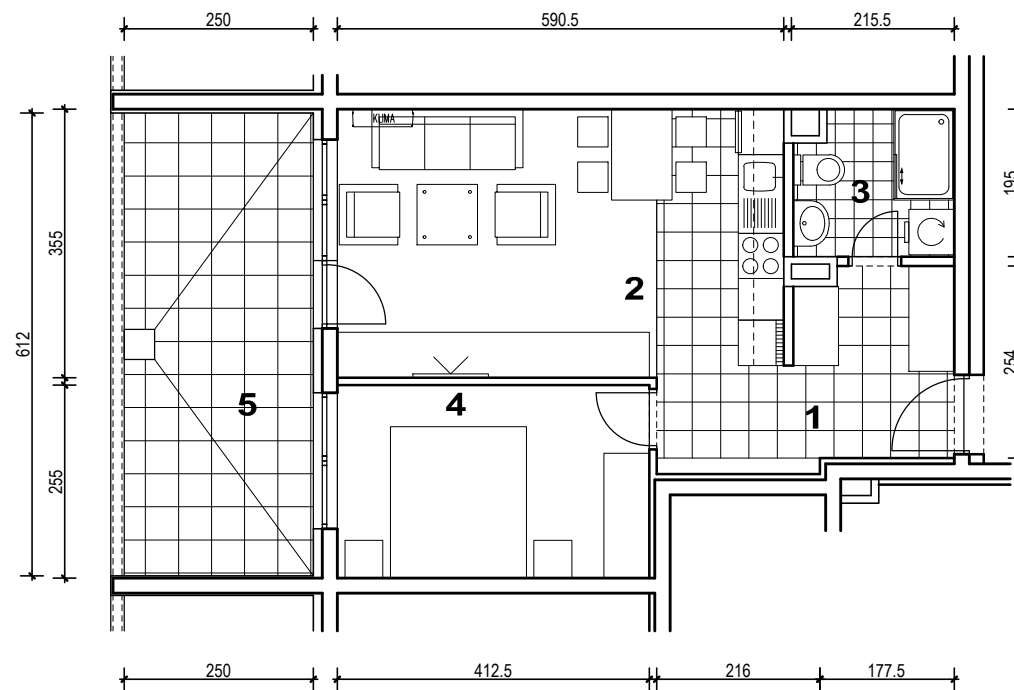
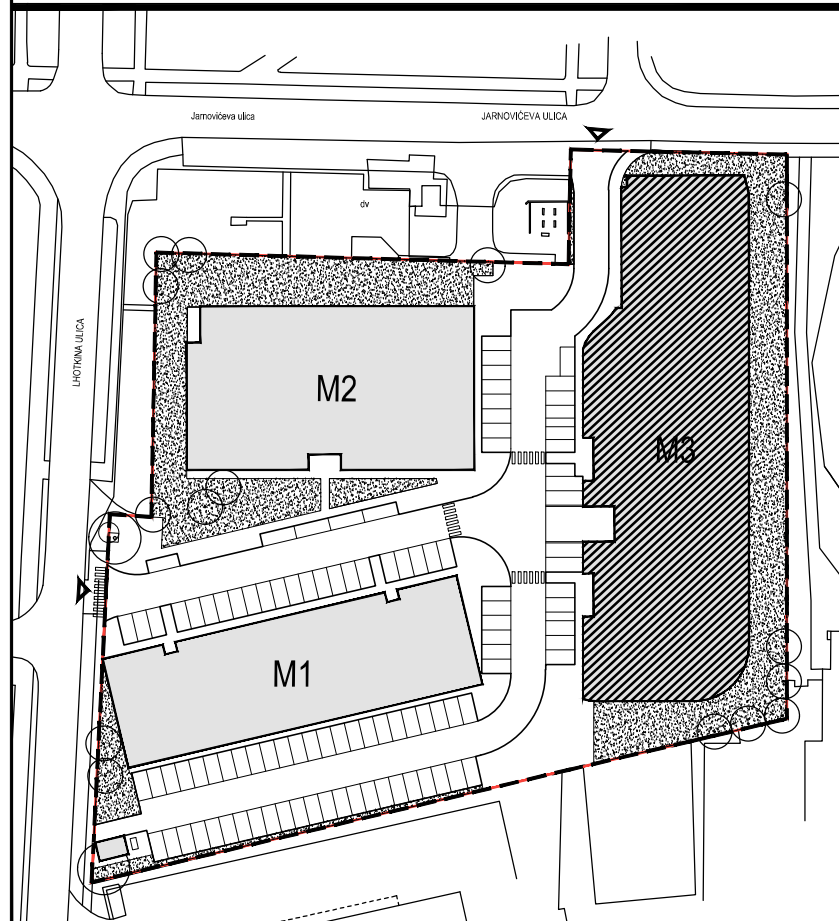
# STAN M3B-20



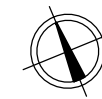
POLOŽAJ U NASELJU



SITUACIJA

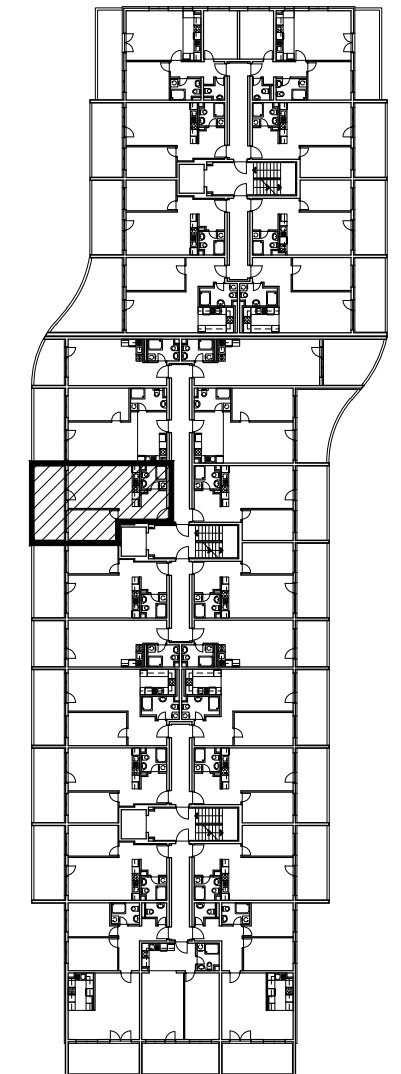


MJ 1:100



PRESJEK

TLOCRT 2. KATA

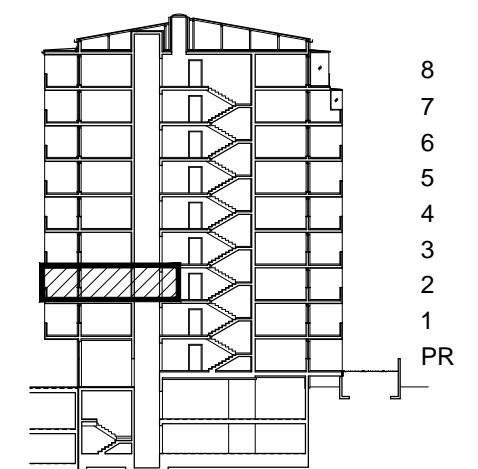


POLOŽAJ STANA U ZGRADI

## STAN M3B-20 - dvosobni

2. KAT

1. ULAZ		7.65	m <sup>2</sup>
2. KUHINJA + DNEVNI BORAVAK		20.96	m <sup>2</sup>
3. KUPAONICA		3.95	m <sup>2</sup>
4. SOBA		10.52	m <sup>2</sup>
5. LOGGIA	0.75x15.30	11.48	m <sup>2</sup>
<b>SVEUKUPNO</b>		<b>54.56</b>	<b>m<sup>2</sup></b>



POLOŽAJ STANA U ZGRADI

**STAN M3B-20 P= 54.56 m<sup>2</sup>**