

STAMBENA ZGRADA OZNAKE M3, JARNOVIĆEVA - LHOTKINA, PREČKO, ZAGREB

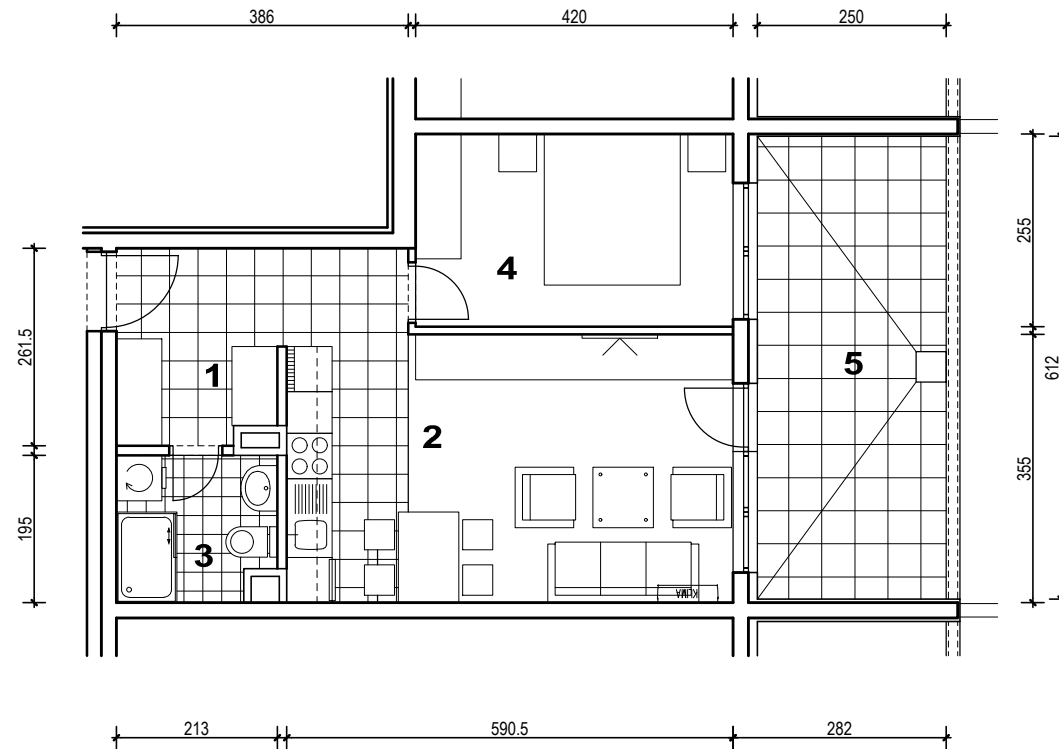
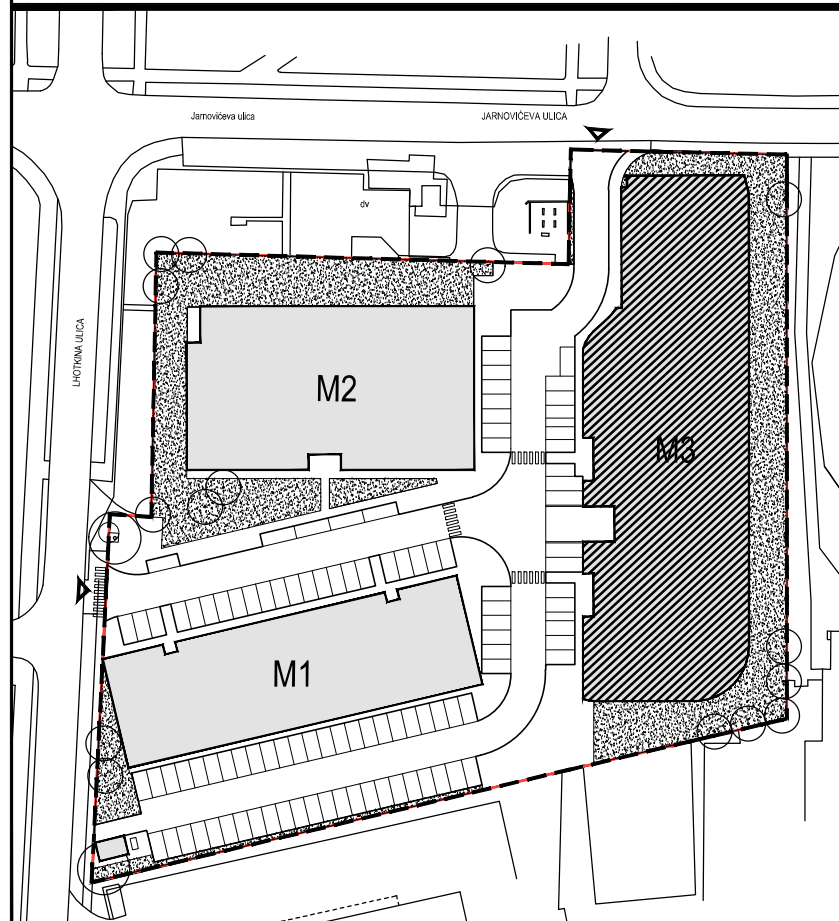
STAN M3B-16



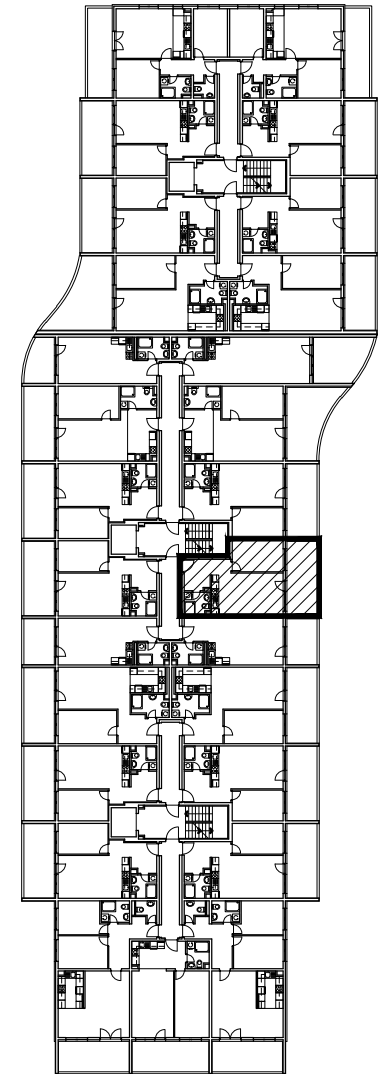
POLOŽAJ U NASELJU



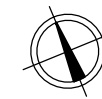
SITUACIJA



TLOCRT 1. KATA



MJ 1:100



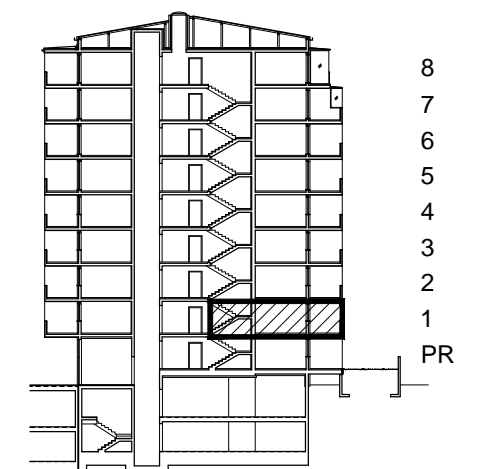
POLOŽAJ STANA U ZGRADI

STAN M3B-16 - dvosobni

1. KAT

PRESJEK

1. ULAZ		7.41	m ²
2. KUHINJA + DNEVNI BORAVAK		20.96	m ²
3. KUPAONICA		3.92	m ²
4. SOBA		10.71	m ²
5. LOGGIA	0.75x15.30	11.48	m ²
SVEUKUPNO		54.48	m²



POLOŽAJ STANA U ZGRADI

STAN M3B-16 P= 54.48 m²