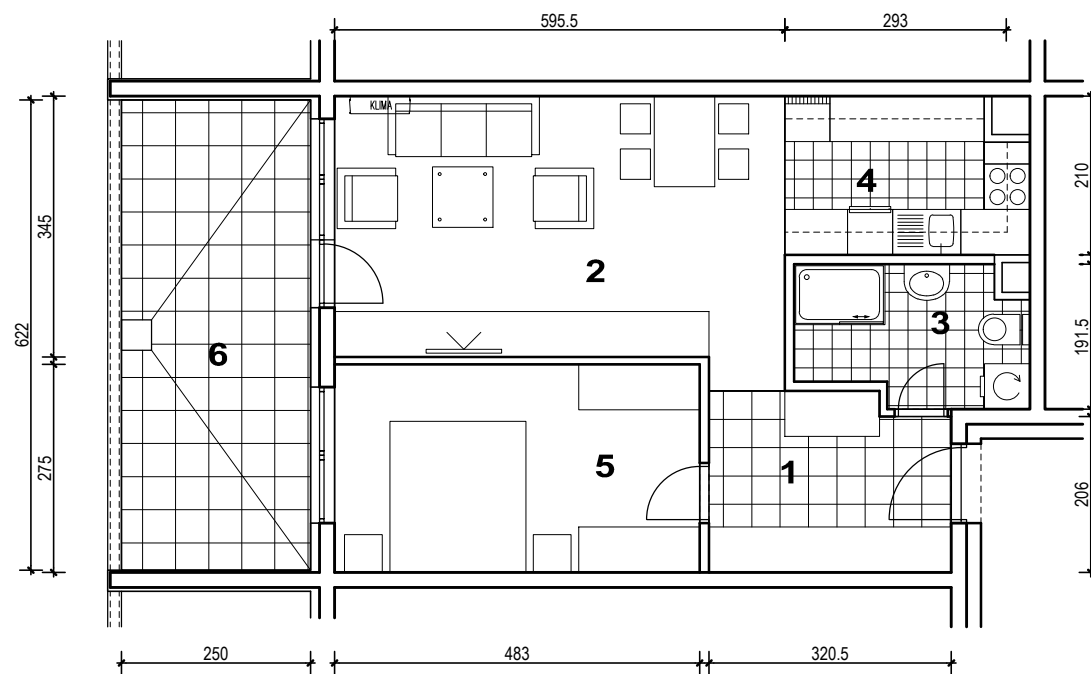
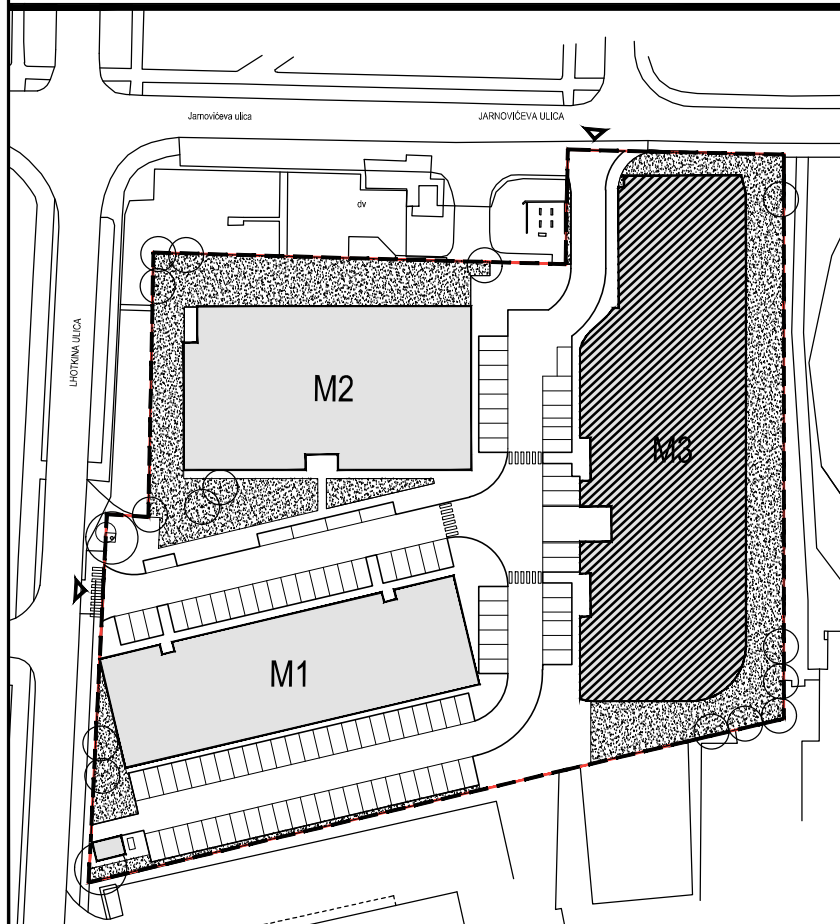




POLOŽAJ U NASELJU



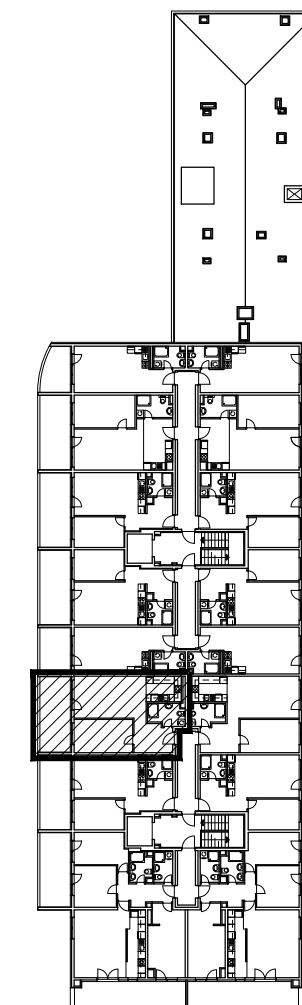
SITUACIJA



MJ 1:100



POLOŽAJ STANA U ZGRADI

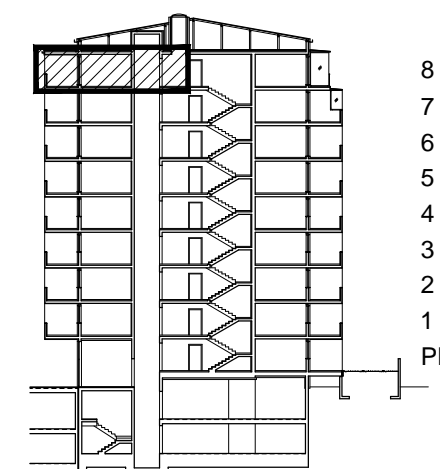


STAN M3A-63 - dvosobni

8. KAT

PRESJEK

1. ULAZ		7.37	m2
2. DNEVNI BORAVAK		20.99	m2
3. KUPAONICA		5.30	m2
4. KUHINJA		6.45	m2
5. SOBA		13.28	m2
6. LOGGIA	0.75x15.55	11.66	m2
SVEUKUPNO		65.05	m2



POLOŽAJ STANA U ZGRADI

STAN M3A-63 P=65.05 m2