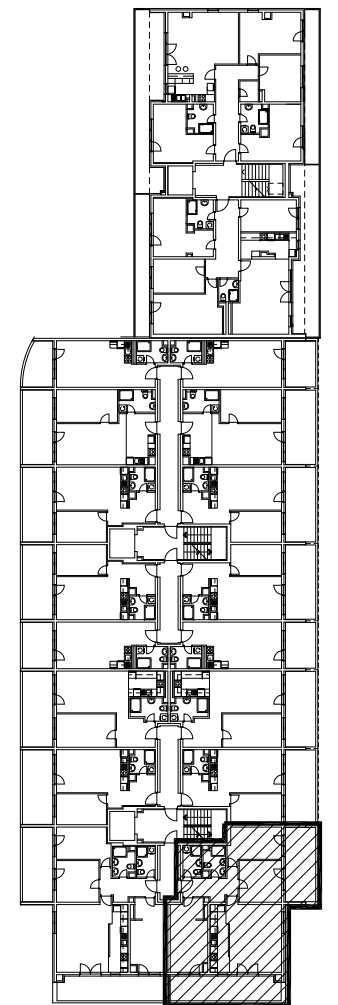


MJ 1:100

TLOCRT 7. KATA



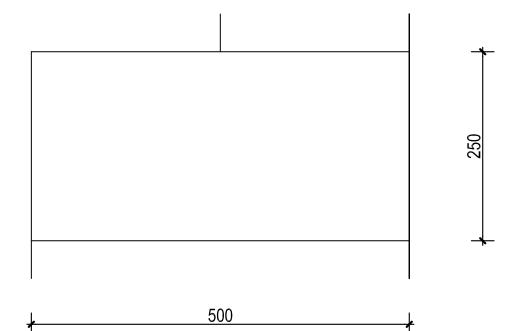
POLOŽAJ STANA U ZGRADI

STAN M3A-60 - četverosobni

7. KAT

1. ULAZ	8.68	m2
2. DNEVNI BORAVAK	24.56	m2
3. KUPAONICA	4.39	m2
4. KUHINJA	8.21	m2
5. SOBA	17.34	m2
6. SOBA	12.04	m2
7. SOBA	12.06	m2
8. KUPAONICA	3.91	m2
9. LOGGIA/BALKON 0.75x15.35	11.51	m2
10. BALKON 0.5x18.31	9.16	m2
<b>SVEUKUPNO</b>	<b>111.86</b>	<b>m2</b>

TLOCRT PARKIRALIŠNOG MJESTA VP-2



STAN M3A-60 P=111.86 m2, PARKIRALIŠNO MJESTO P=12.50 m2