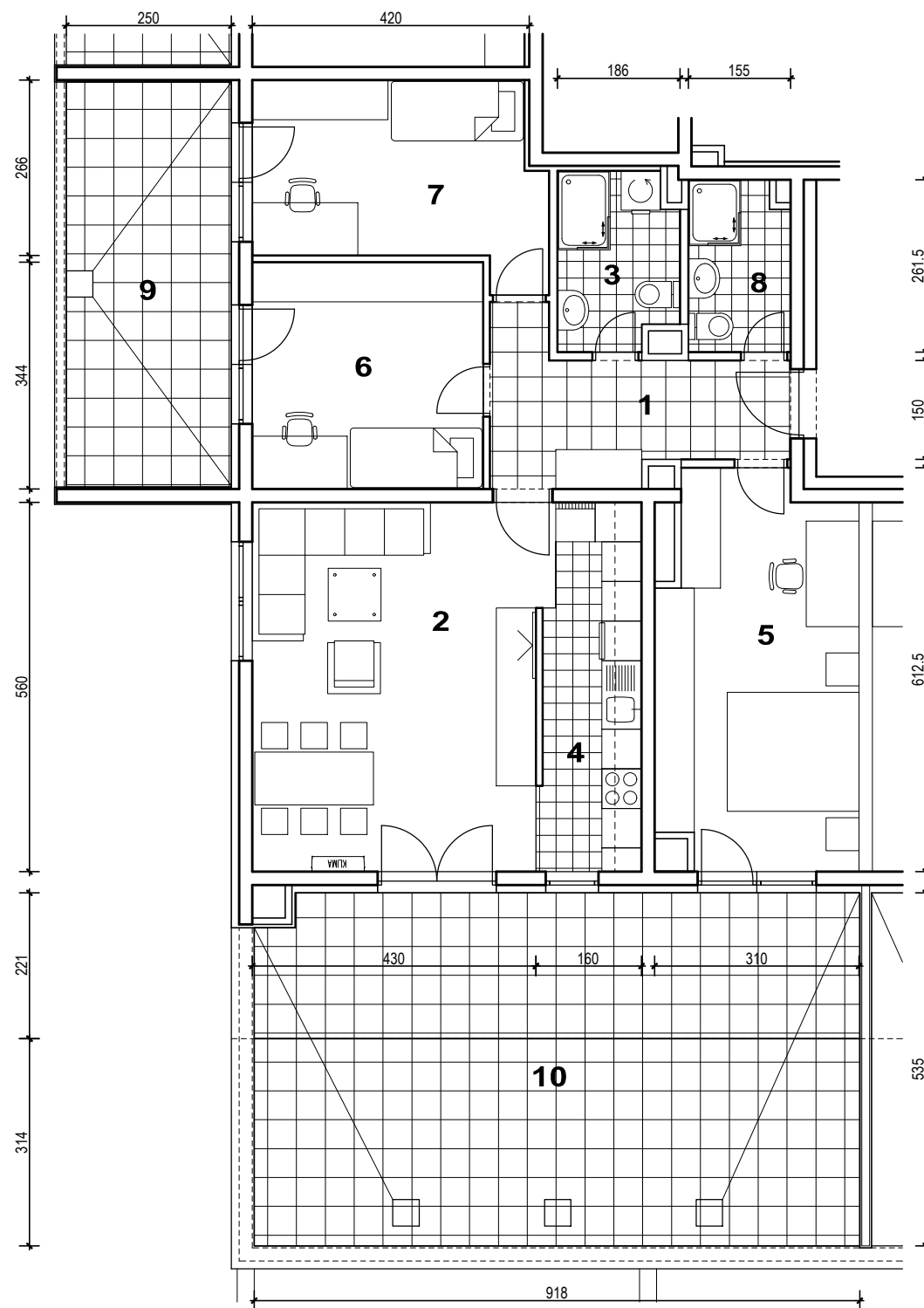
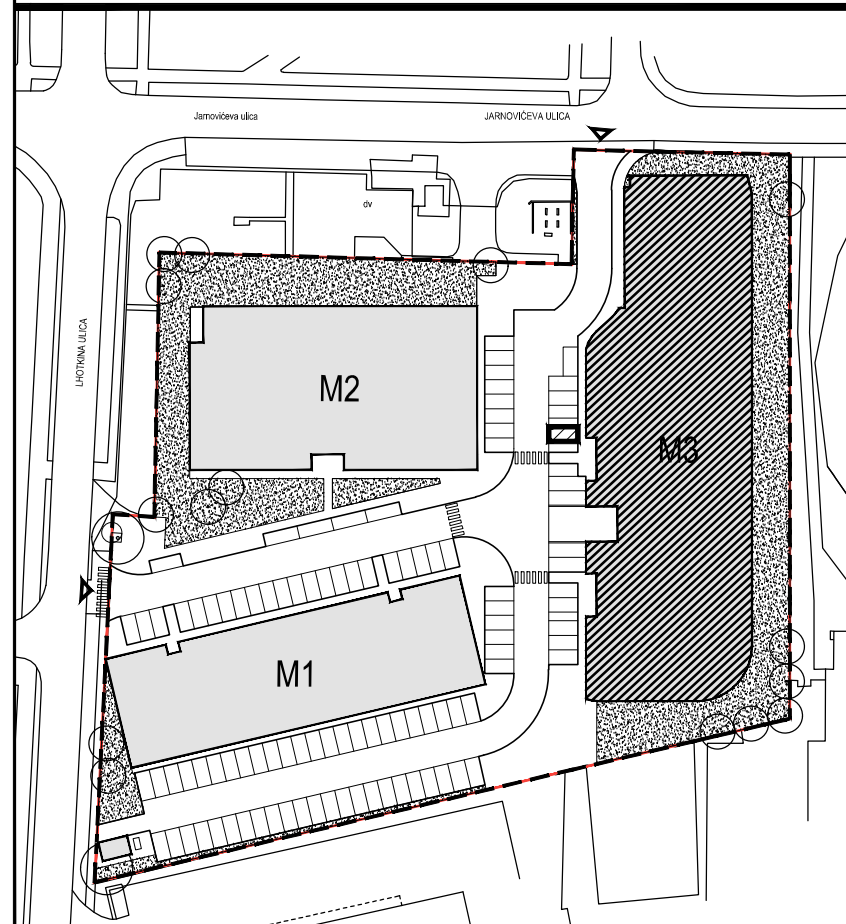


1. ULAZ		8.68	m ²
2. DNEVNI BORAVAK		24.56	m ²
3. KUPAONICA		4.70	m ²
4. KUHINJA		8.21	m ²
5. SOBA		17.37	m ²
6. SOBA		12.04	m ²
7. SOBA		11.99	m ²
8. KUPAONICA		3.91	m ²
9. LOGGIA	0.75x15.35	11.51	m ²
10. BALKON/TERASA	0.5x19.96+0.25x28.83	17.19	m ²
SVEUKUPNO		120.16	m²



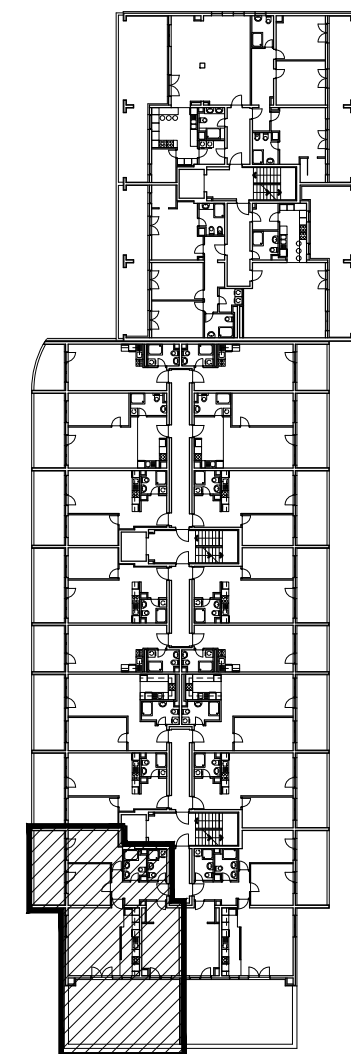
MJ 1:100

STAN M3A-49 - četverosobni

5. KAT

STAN M3A-49 P=120.16 m², PARKIRALIŠNO MJESTO P=11.00 m²

TLOCRT 5. KATA



POLOŽAJ STANA U ZGRADI

TLOCRT PARKIRALIŠNOG MJESTA VP-5

