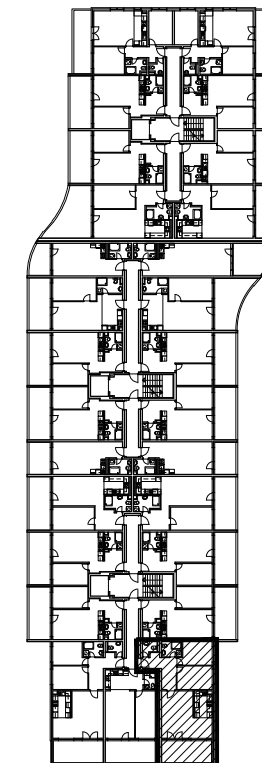


MJ 1:100



TLOCRT 4. KATA



POLOŽAJ STANA U ZGRADI

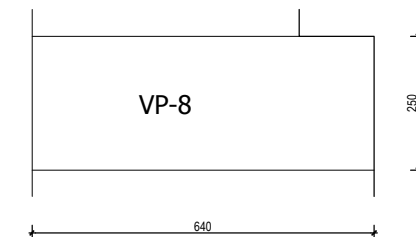


STAN M3A-40 - trosobni

4. KAT

1. ULAZ		9.81 m2
2. DNEVNI BORAVAK		25.55 m2
3. KUPAONICA		4.12 m2
4. KUHINJA		6.15 m2
5. SOBA		11.00 m2
6. SOBA		10.25 m2
7. WC		2.47 m2
8. LOGGIA	0.75x14.55	10.91 m2
SVEUKUPNO		80.26 m2

TLOCRT PARKIRALIŠNOG MJESTA VP-8



STAN M3A-40 P=80.26 m2, PARKIRALIŠNO MJESTO P=16.00 m2