

STAMBENA ZGRADA OZNAKE M3, JARNOVIĆEVA - LHOTKINA, PREČKO, ZAGREB

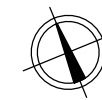
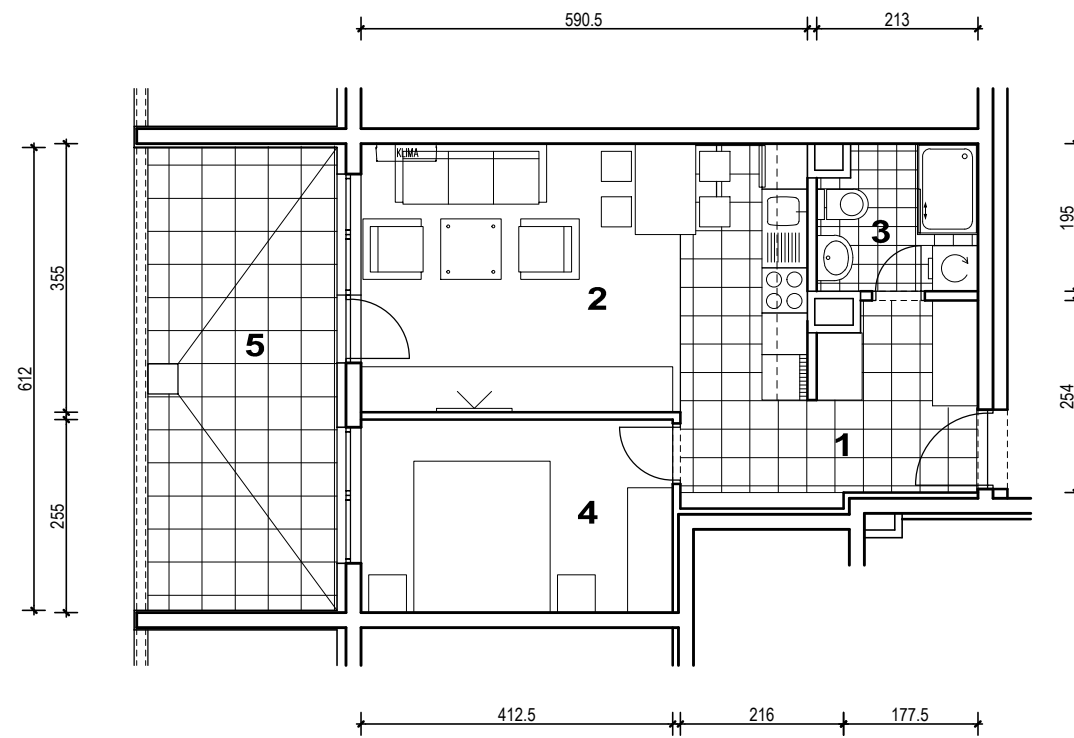
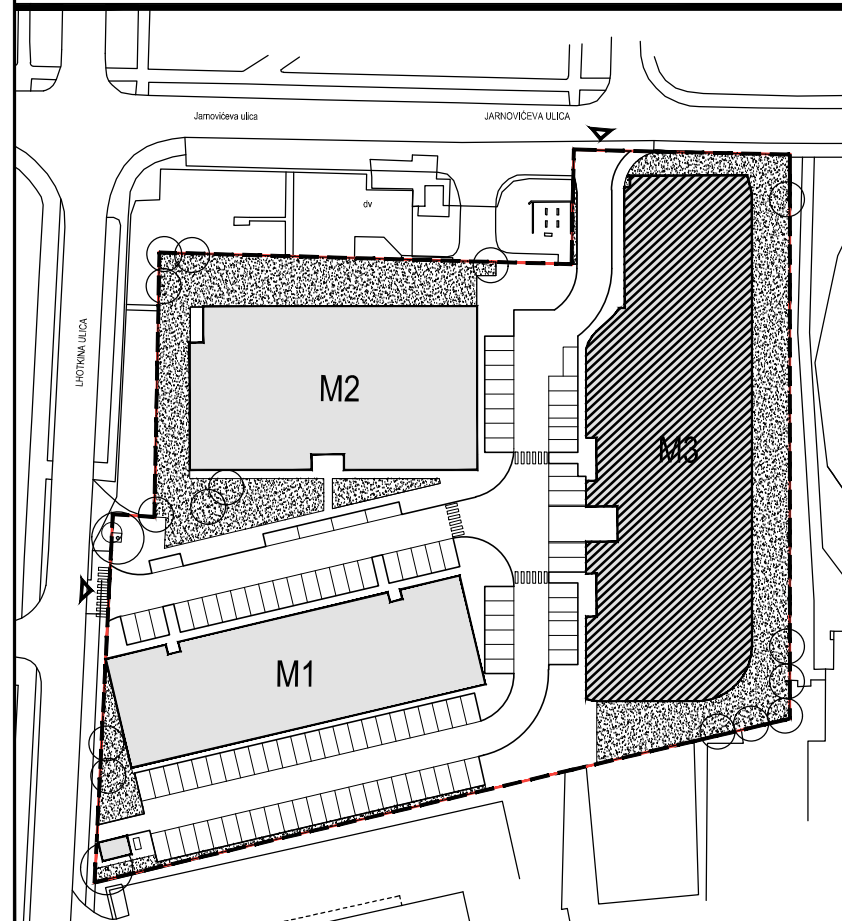
STAN M3A-35



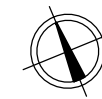
POLOŽAJ U NASELJU



SITUACIJA

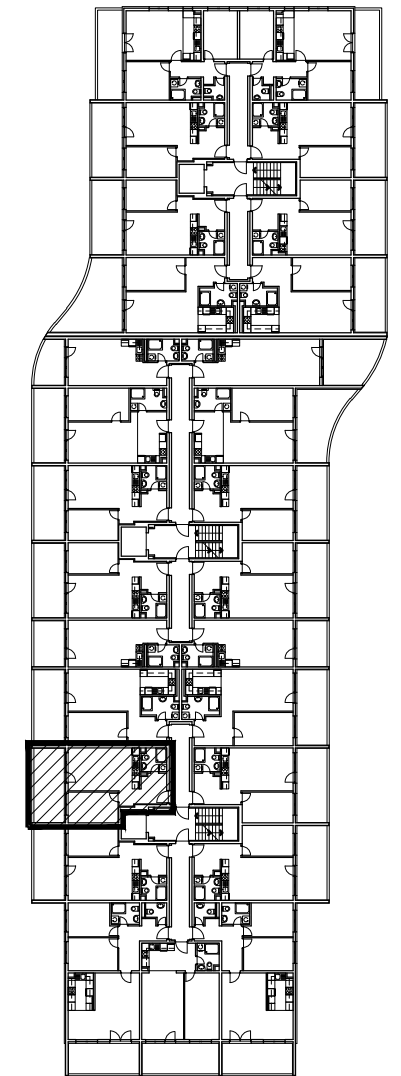


MJ 1:100



PRESJEK

TLOCRT 4. KATA

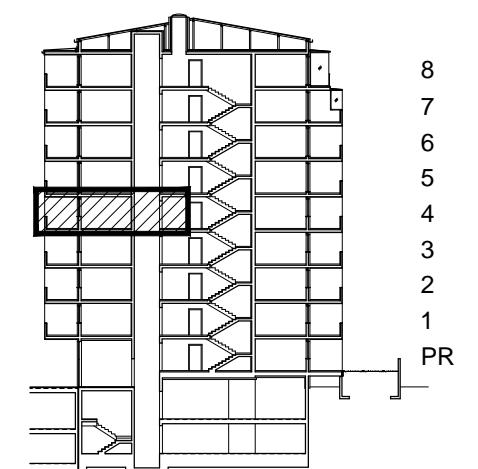


POLOŽAJ STANA U ZGRADI

STAN M3A-35 - dvosobni

4. KAT

1. ULAZ		7.56	m ²
2. KUHINJA + DNEVNI BORAVAK		20.96	m ²
3. KUPAONICA		3.95	m ²
4. SOBA		10.52	m ²
5. LOGGIA	0.75x15.30	11.48	m ²
SVEUKUPNO		54.47	m²



POLOŽAJ STANA U ZGRADI

STAN M3A-35 P= 54.47 m²