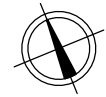
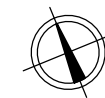
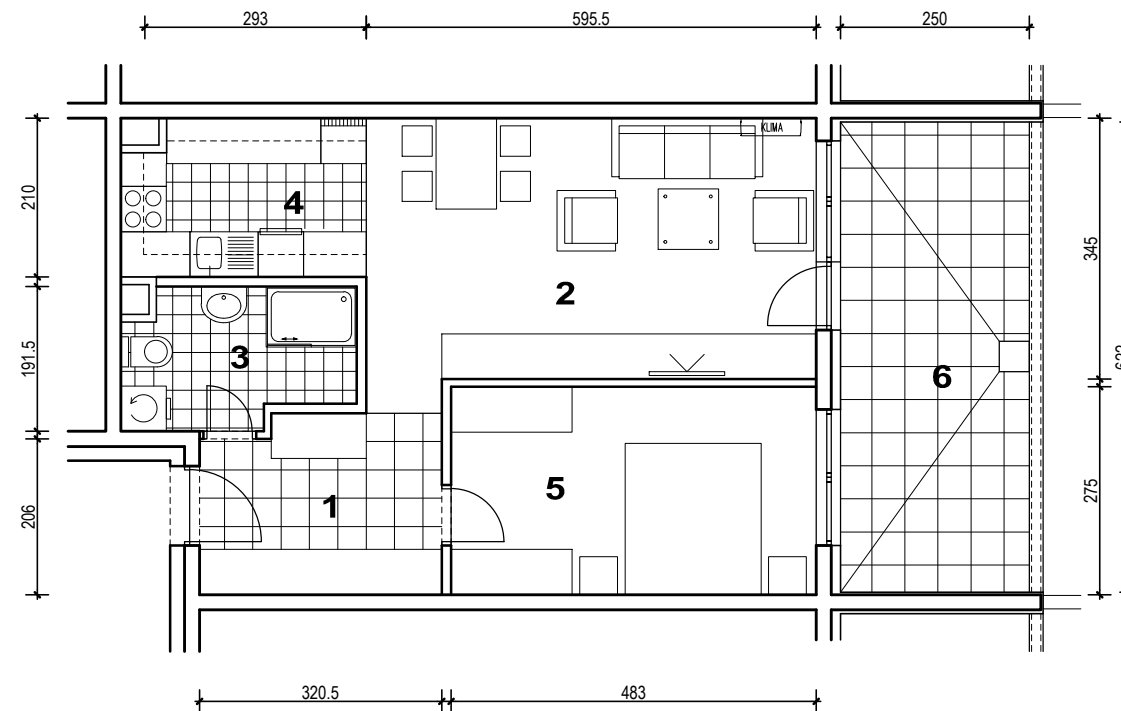
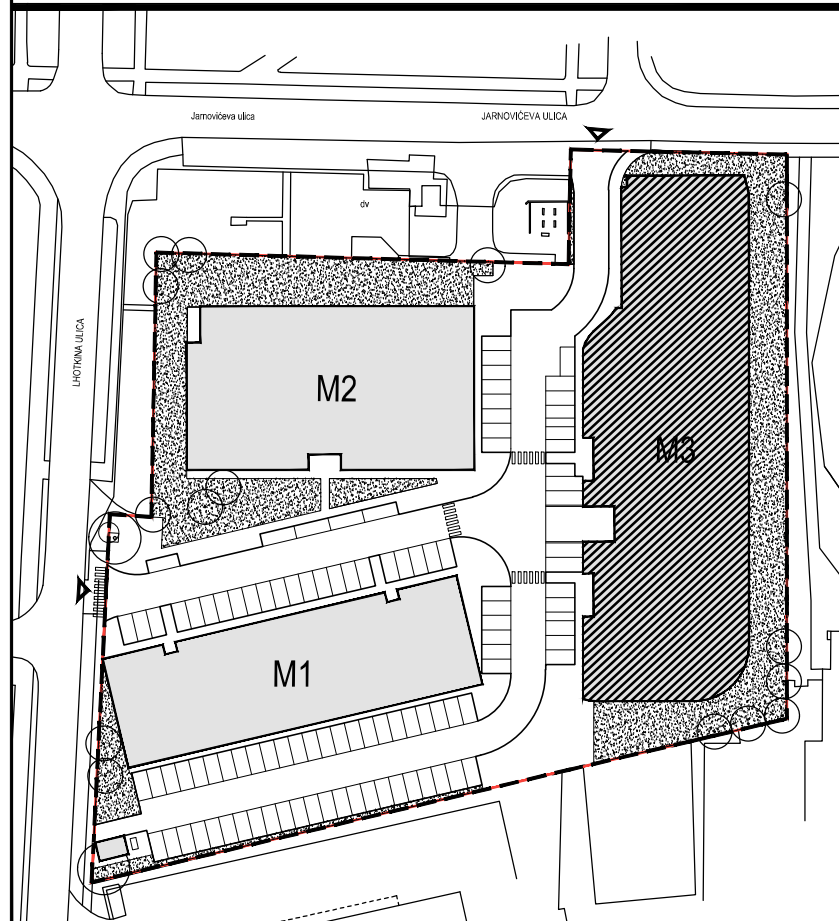




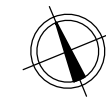
POLOŽAJ U NASELJU



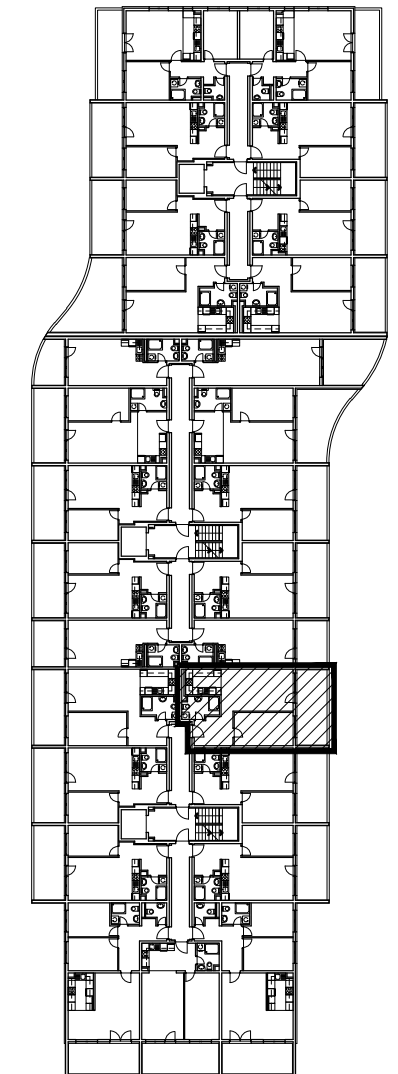
SITUACIJA



MJ 1:100



POLOŽAJ STANA U ZGRADI

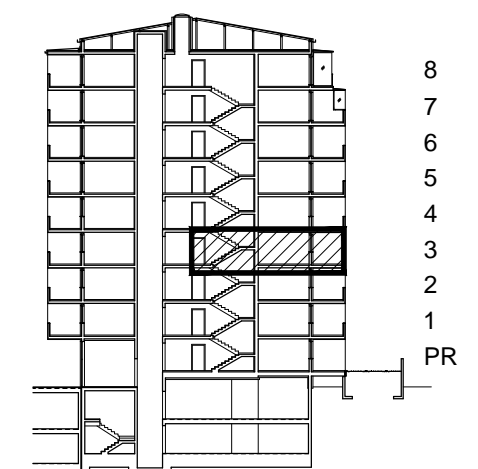


STAN M3A-28 - dvosobni

3. KAT

PRESJEK

1. ULAZ		7.37	m ²
2. DNEVNI BORAVAK		20.99	m ²
3. KUPAONICA		5.30	m ²
4. KUHINJA		6.54	m ²
5. SOBA		13.28	m ²
6. LOGGIA	0.75x15.55	11.66	m ²
SVEUKUPNO		65.14	m²



POLOŽAJ STANA U ZGRADI

STAN M3A-28 P=65.14 m²