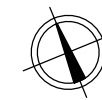
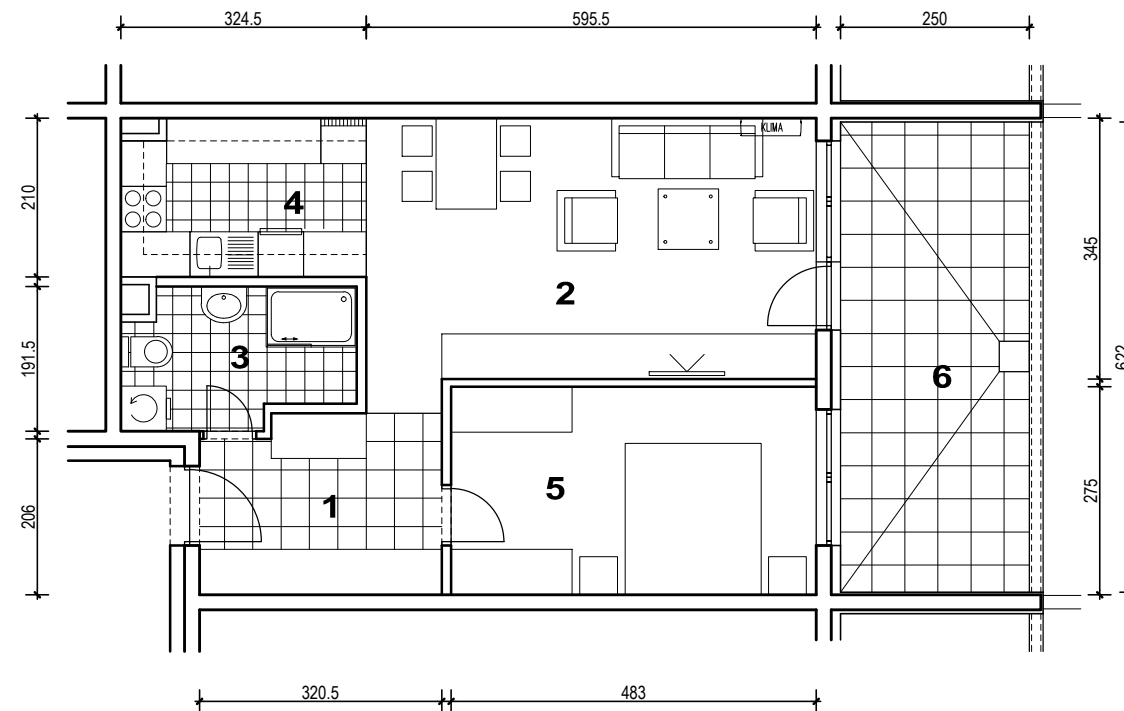
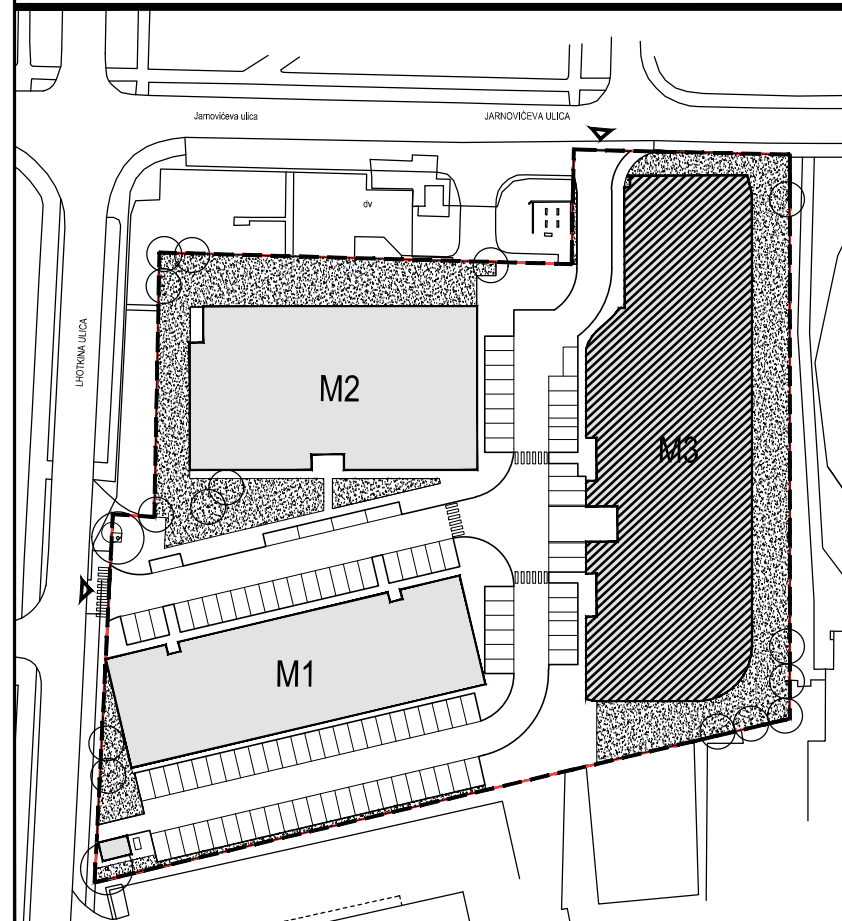




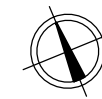
POLOŽAJ U NASELJU



SITUACIJA

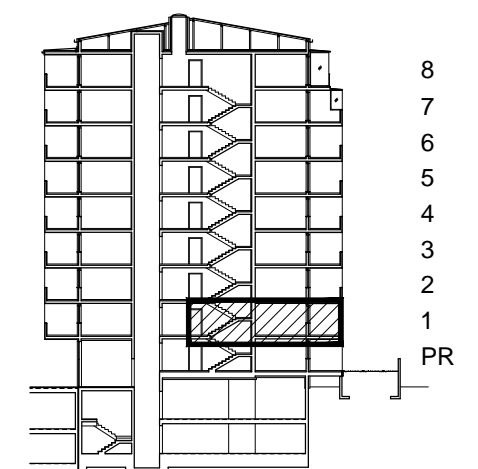


MJ 1:100



POLOŽAJ STANA U ZGRADI

PRESJEK



POLOŽAJ STANA U ZGRADI

STAN M3A-10 - dvosobni

1. KAT

1. ULAZ		7.37	m ²
2. DNEVNI BORAVAK		20.99	m ²
3. KUPAONICA		5.30	m ²
4. KUHNJA		6.63	m ²
5. SOBA		13.28	m ²
6. LOGGIA	0.75x15.55	11.66	m ²
SVEUKUPNO		65.23	m²

STAN M3A-10 P=65.23 m²