

STAMBENA ZGRADA OZNAKE M3, JARNOVIĆEVA - LHOTKINA, PREČKO, ZAGREB

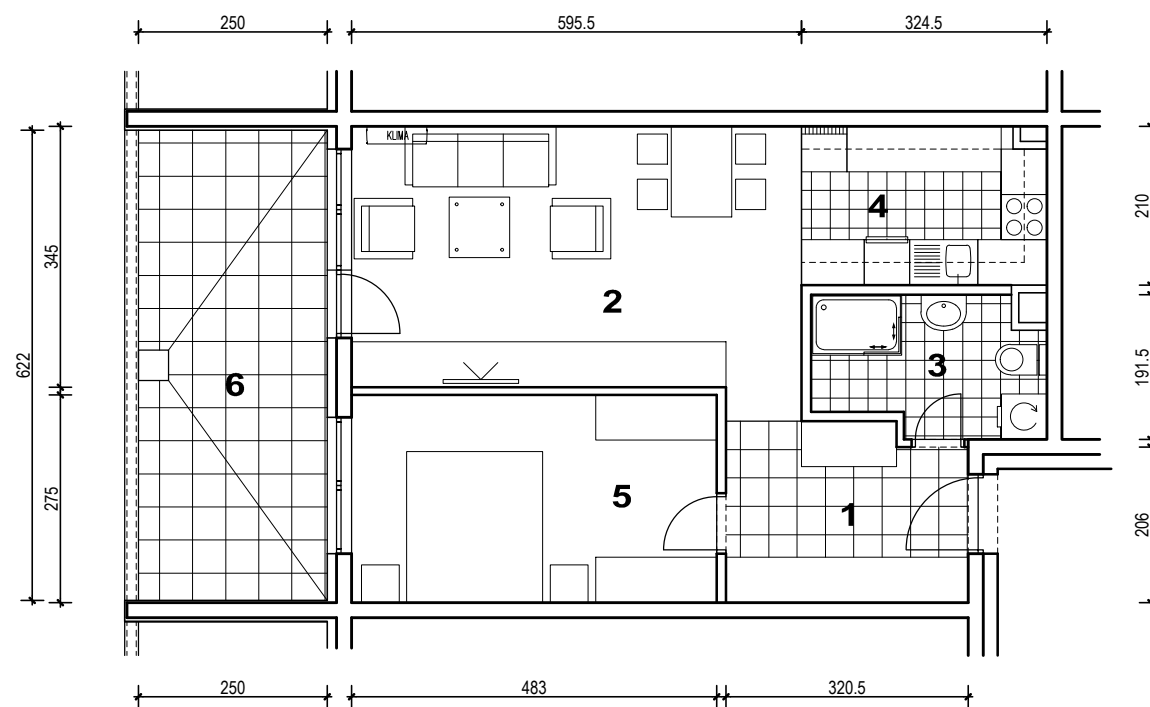
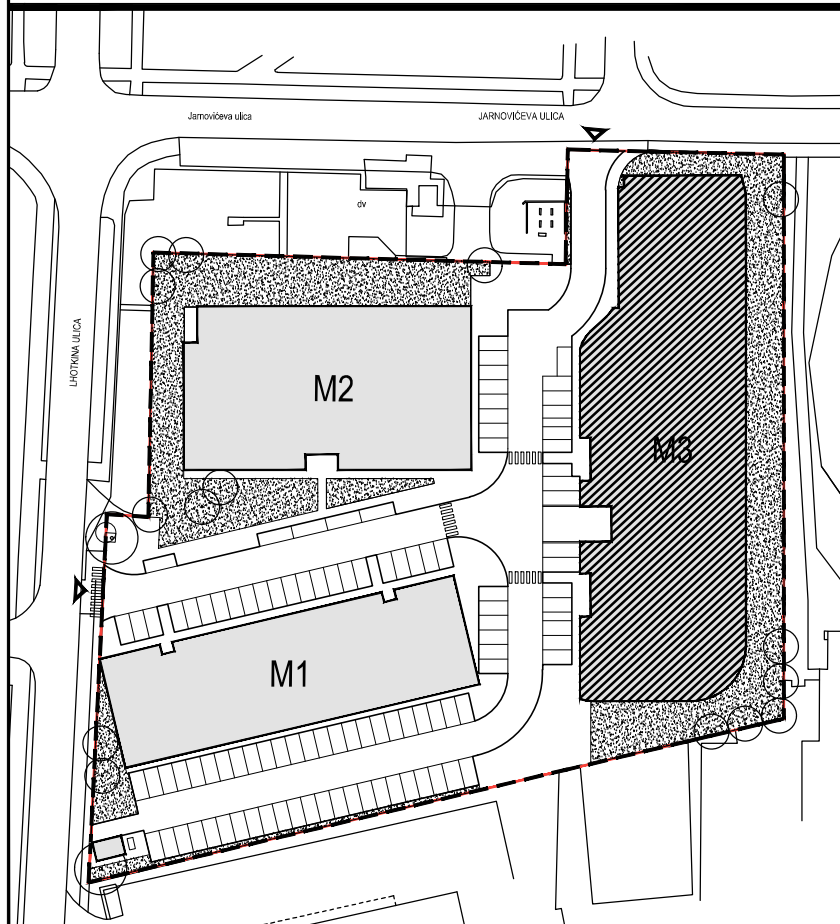
STAN M3A-9



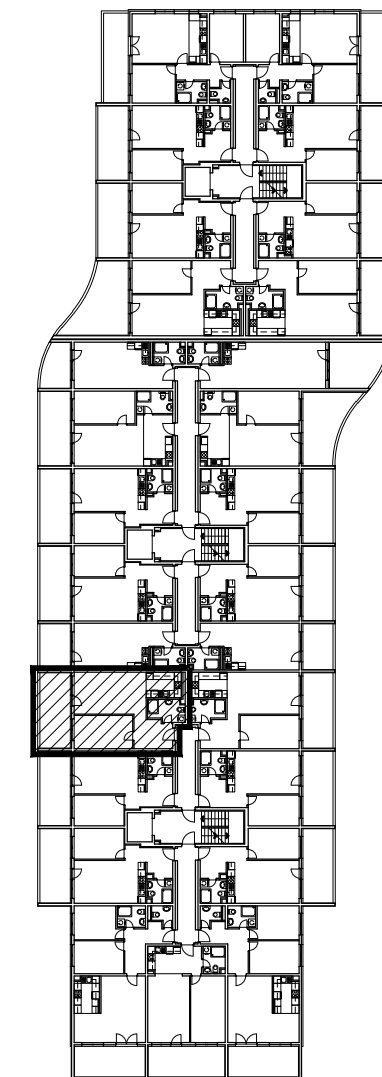
POLOŽAJ U NASELJU



SITUACIJA



TLOCRT 1. KATA



MJ 1:100



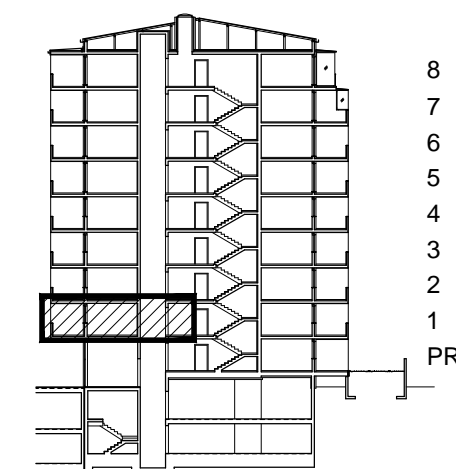
POLOŽAJ STANA U ZGRADI

STAN M3A-9 - dvosobni

1. KAT

PRESJEK

1. ULAZ		7.37	m ²
2. DNEVNI BORAVAK		20.99	m ²
3. KUPAONICA		5.30	m ²
4. KUHINJA		6.68	m ²
5. SOBA		13.28	m ²
6. LOGGIA	0.75x15.55	11.66	m ²
SVEUKUPNO		65.28	m²



POLOŽAJ STANA U ZGRADI

STAN M3A-9 P=65.28 m²