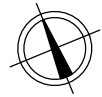


STAMBENA ZGRADA OZNAKE M3, JARNOVIĆEVA - LHOTKINA, PREČKO, ZAGREB

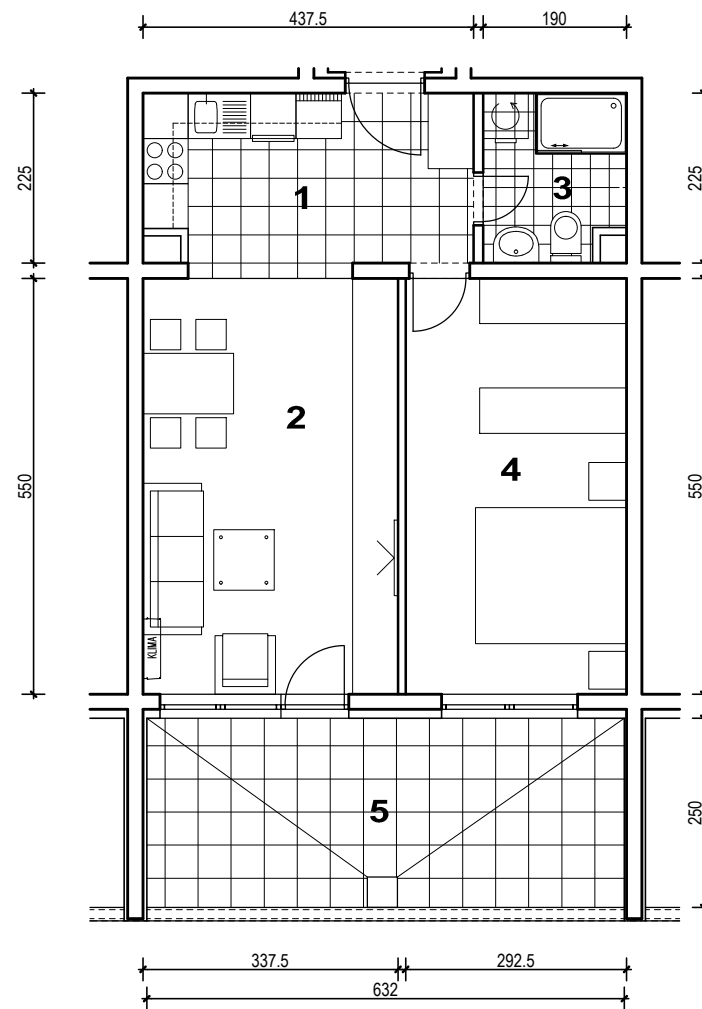
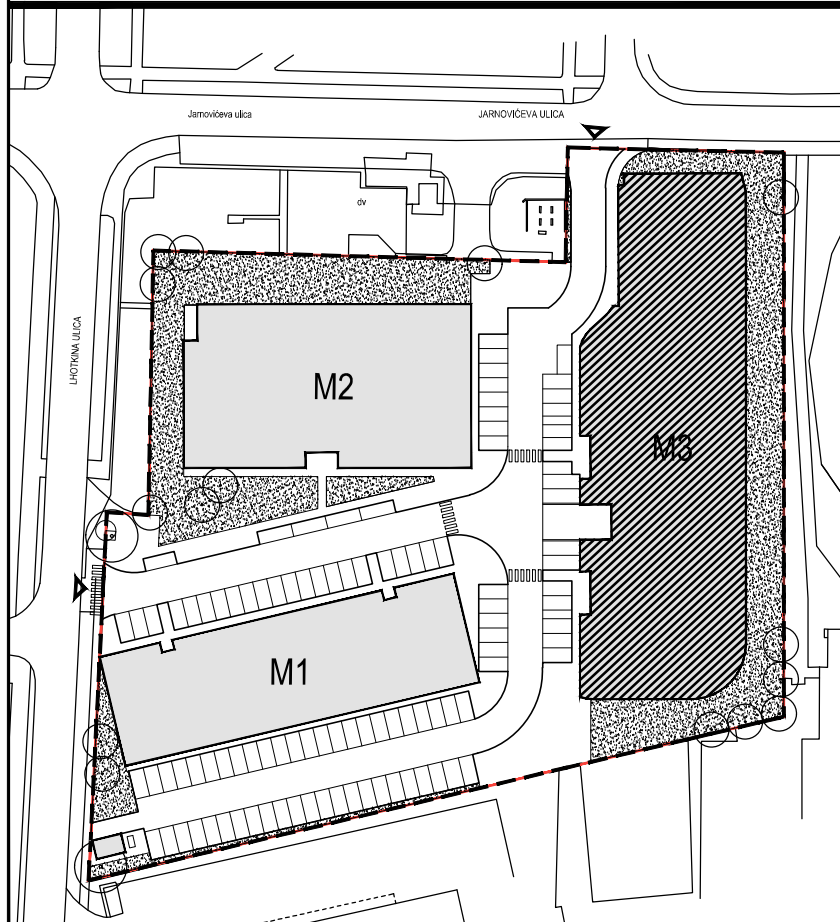
STAN M3A-6



POLOŽAJ U NASELJU



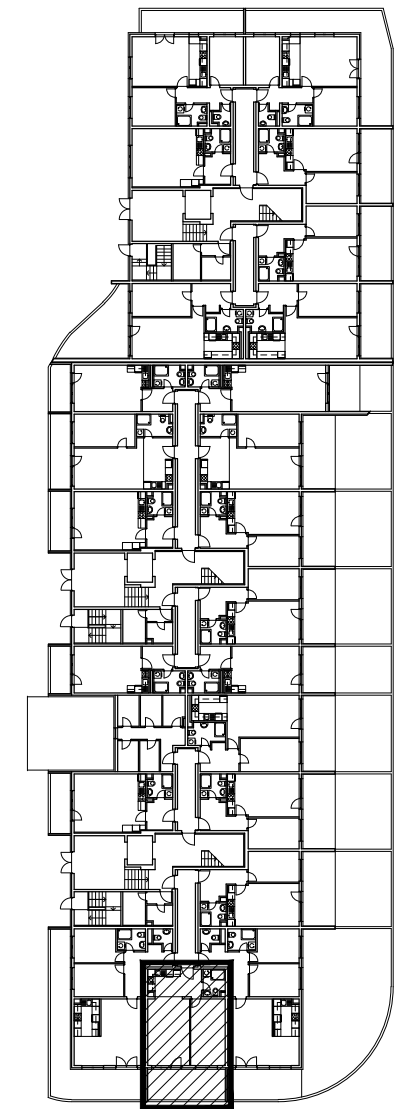
SITUACIJA



MJ 1:100



TLOCRT PRIZEMLJA



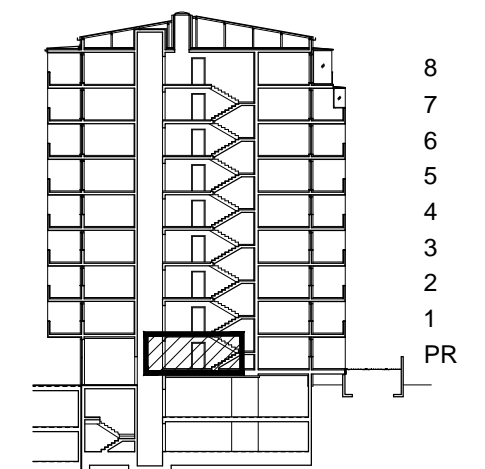
POLOŽAJ STANA U ZGRADI

STAN M3A-6 - dvosobni

PRIZEMLJE

PRESJEK

1. ULAZ/KUHINJA		10.00	m ²
2. DNEVNI BORAVAK		18.56	m ²
3. KUPAONICA		4.06	m ²
4. SOBA		16.09	m ²
5. LOGGIA	0.75x15.80	11.85	m ²
SVEUKUPNO		60.56	m²



POLOŽAJ STANA U ZGRADI

STAN M3A-6 P= 60.56 m²