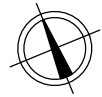


# STAMBENA ZGRADA OZNAKE M3, JARNOVIĆEVA - LHOTKINA, PREČKO, ZAGREB

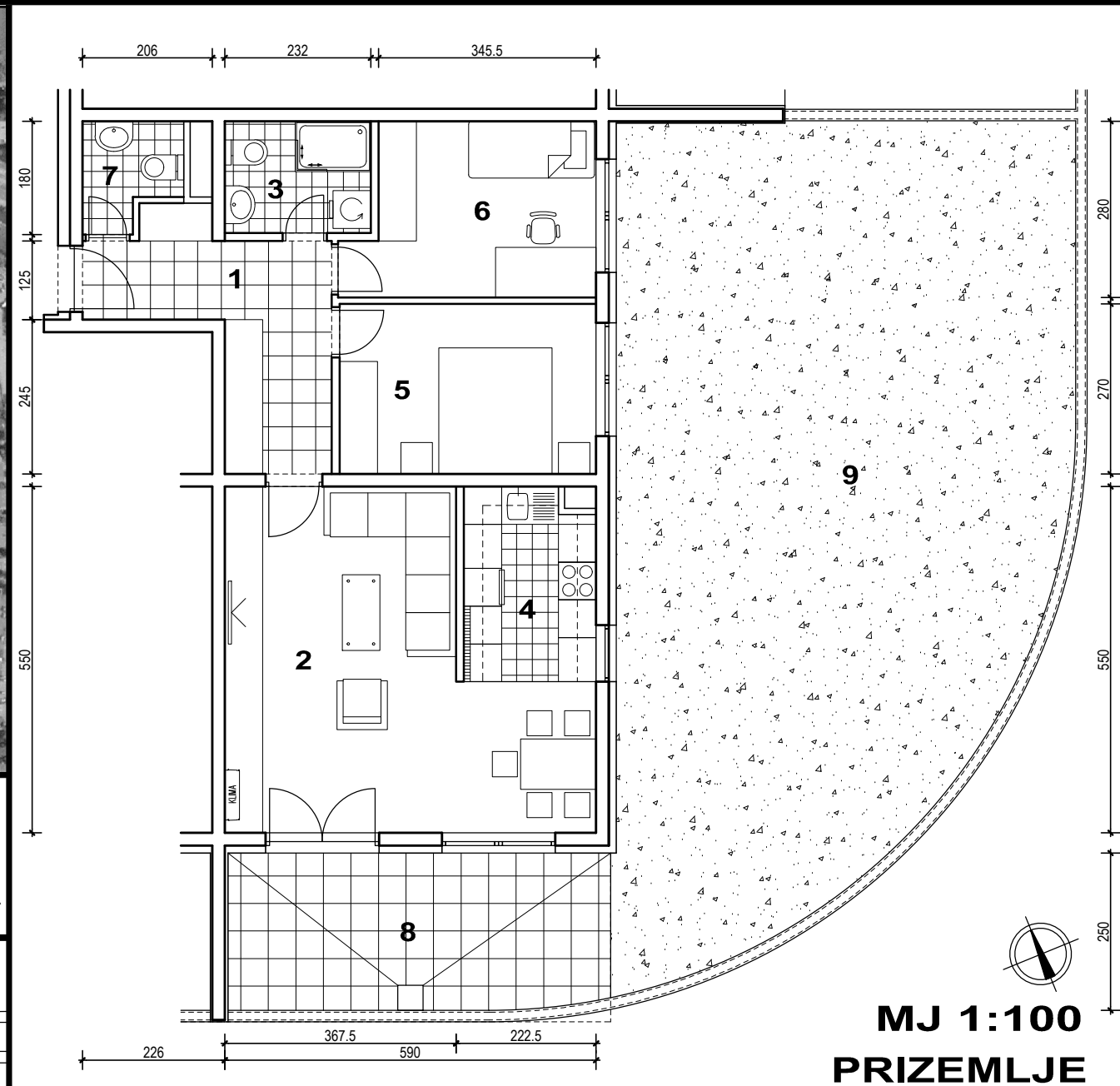
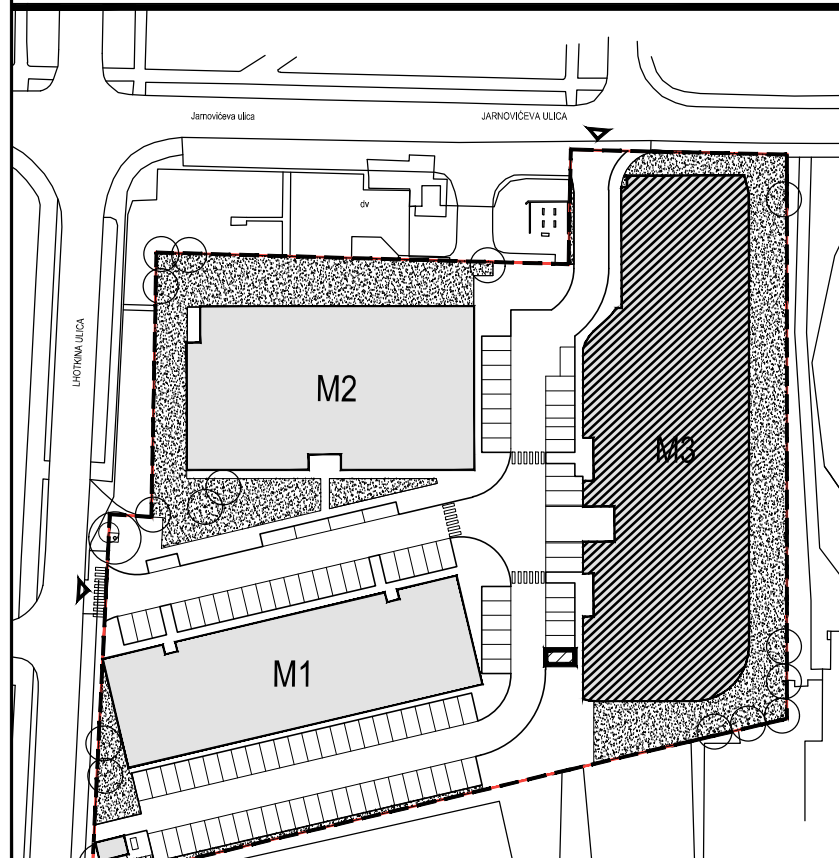
# STAN M3A-5



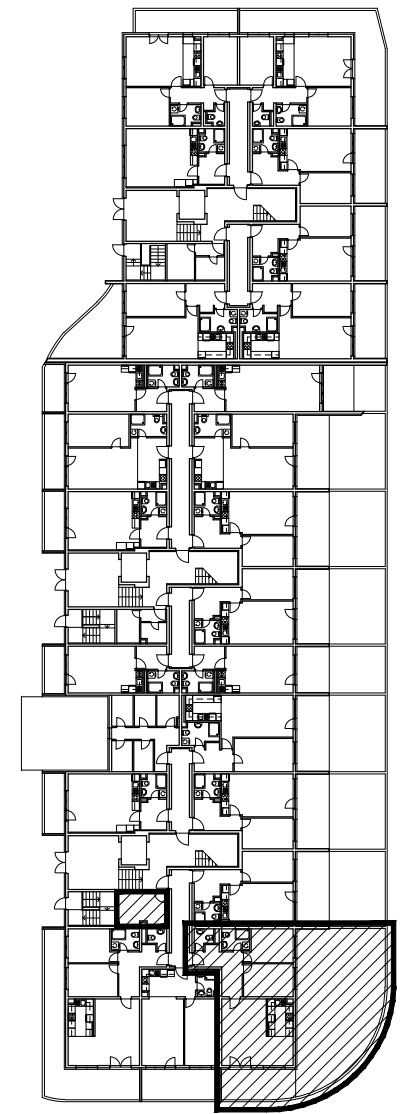
POLOŽAJ U NASELJU



SITUACIJA



## TLOCRT PRIZEMLJA

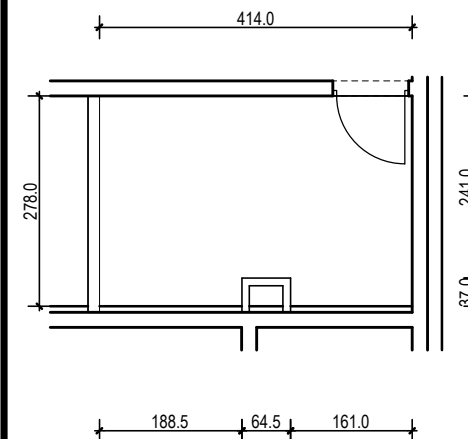


POLOŽAJ STANA I SPREMIŠTA

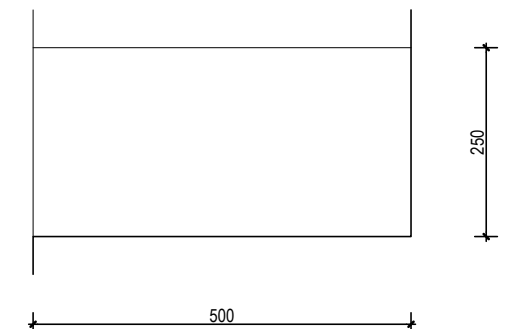
## STAN M3A-5 - trosobni

1. ULAZ	9.81 m <sup>2</sup>
2. DNEVNI BORAVAK	25.55 m <sup>2</sup>
3. KUPAONICA	4.12 m <sup>2</sup>
4. KUHINJA	6.24 m <sup>2</sup>
5. SOBA	11.00 m <sup>2</sup>
6. SOBA	10.25 m <sup>2</sup>
7. WC	2.41 m <sup>2</sup>
8. BALKON	0.5x15.07
SVEUKUPNO	76.92 m <sup>2</sup>
9. VRT	84.66 m <sup>2</sup>
A1 SPREMIŠTE A1 (PRIZEMLJE)	11.27 m <sup>2</sup>

## TLOCRT SPREMIŠTA A1



## TLOCRT PARKIRALIŠNOG MJESTA VP-16



**STAN M3A-5 P= 76.92m<sup>2</sup>, VRT 84.66 m<sup>2</sup>, SPREMIŠTE 11.27 m<sup>2</sup>, PARKIRALIŠNO MJESTO P=12.51 m<sup>2</sup>**