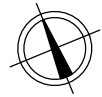


STAMBENA ZGRADA OZNAKE M3, JARNOVIĆEVA - LHOTKINA, PREČKO, ZAGREB

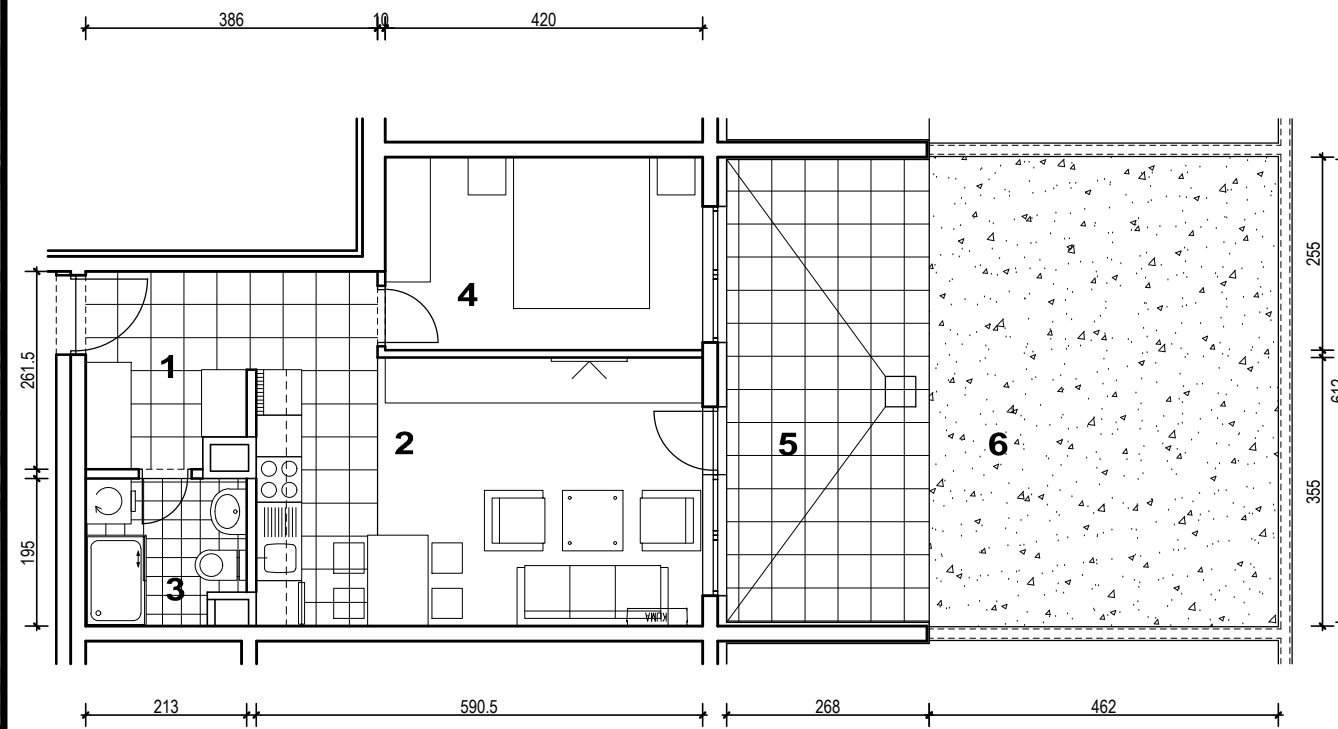
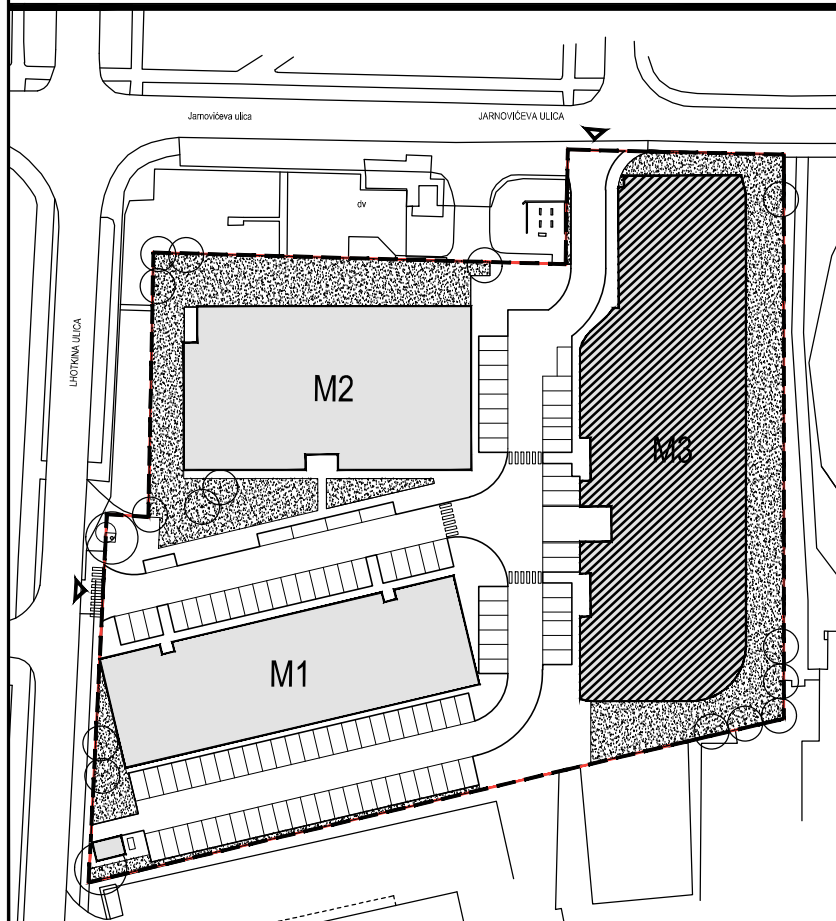
STAN M3A-4



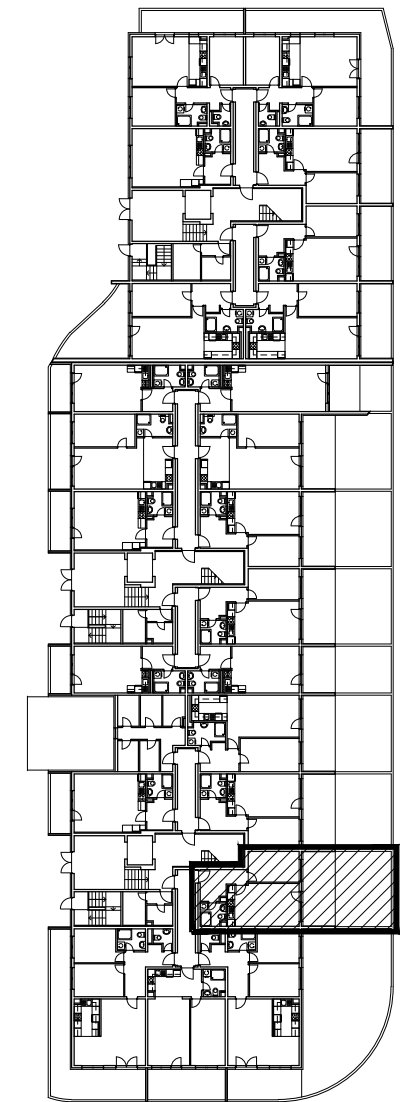
POLOŽAJ U NASELJU



SITUACIJA



TLOCRT PRIZEMLJA



POLOŽAJ STANA U ZGRADI

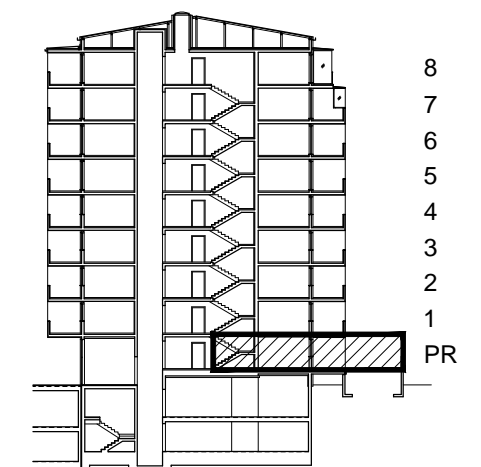
MJ 1:100

STAN M3A-4 - dvosobni

PRIZEMLJE

PRESJEK

1. ULAZ		7.32	m ²
2. KUHINJA + DNEVNI BORAVAK		20.96	m ²
3. KUPAONICA		3.92	m ²
4. SOBA		10.71	m ²
5. LOGGIA	0.75x16.40	12.30	m ²
SVEUKUPNO		55.21	m ²
6. VRT		28.74	m ²



POLOŽAJ STANA U ZGRADI

STAN M3A-4 P= 55.21 m², VRT 28.74 m²