

STAMBENA ZGRADA OZNAKE M3, JARNOVIĆEVA - LHOTKINA, PREČKO, ZAGREB

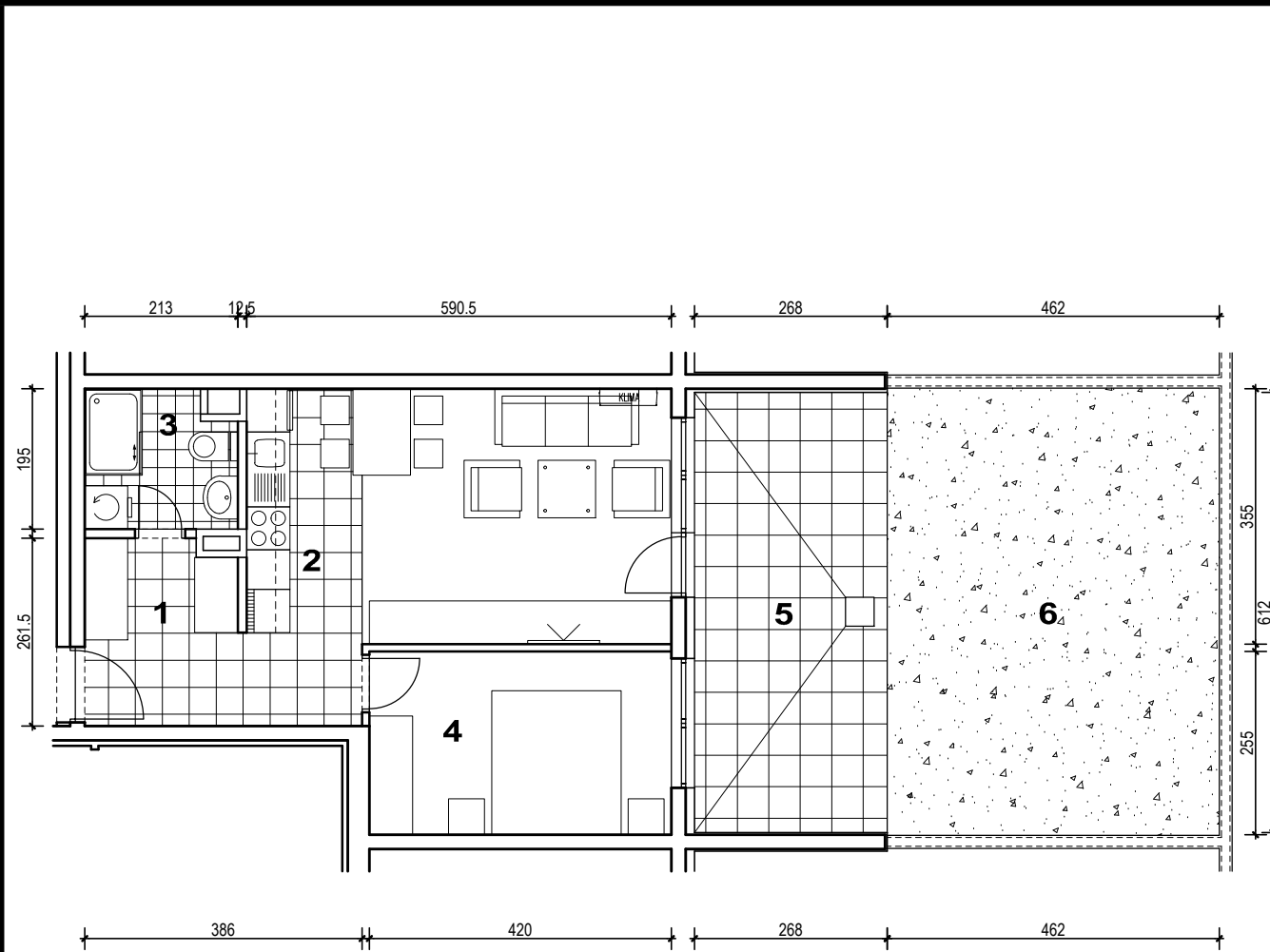
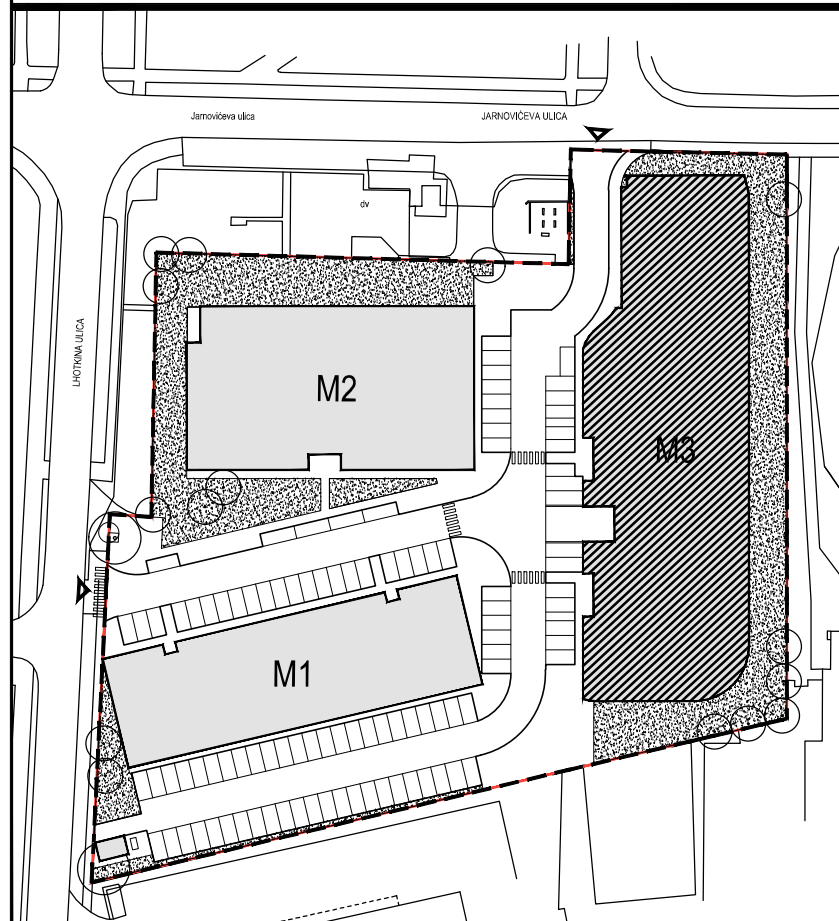
STAN M3A-3



POLOŽAJ U NASELJU



SITUACIJA

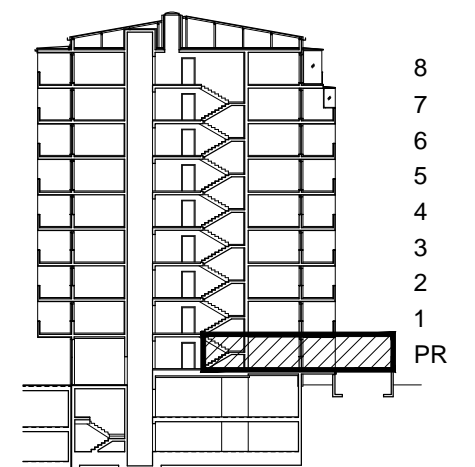


MJ 1:100



POLOŽAJ STANA U ZGRADI

PRESJEK



POLOŽAJ STANA U ZGRADI

STAN M3A-3 - dvosobni

PRIZEMLJE

1. ULAZ		7.41 m ²
2. KUHINJA + DNEVNI BORAVAK		20.96 m ²
3. KUPAONICA		3.92 m ²
4. SOBA		10.71 m ²
5. LOGGIA	0.75x16.40	12.30 m ²
SVEUKUPNO		55.30 m²
6. VRT		28.74 m ²

STAN M3A-3 P= 55.30 m², VRT 28.74 m²