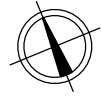


STAMBENA ZGRADA OZNAKE M3, JARNOVIĆEVA - LHOTKINA, PREČKO, ZAGREB

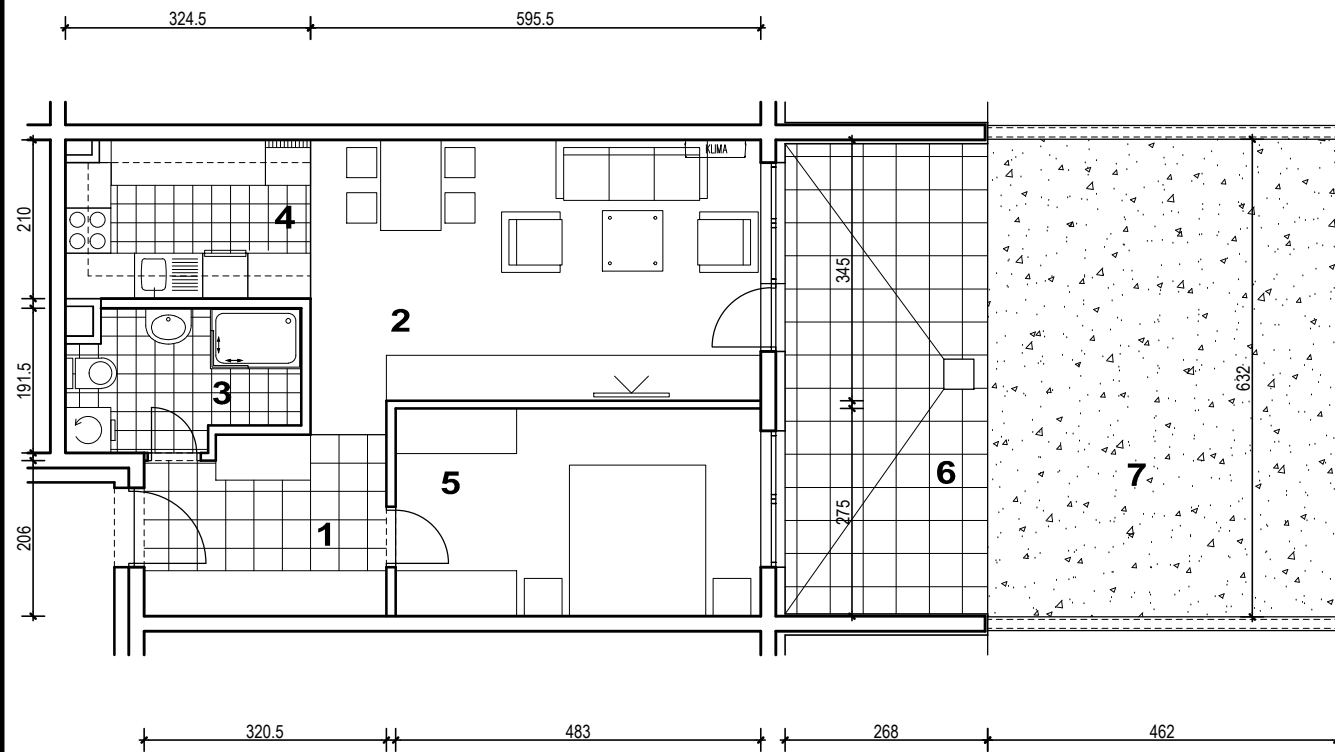
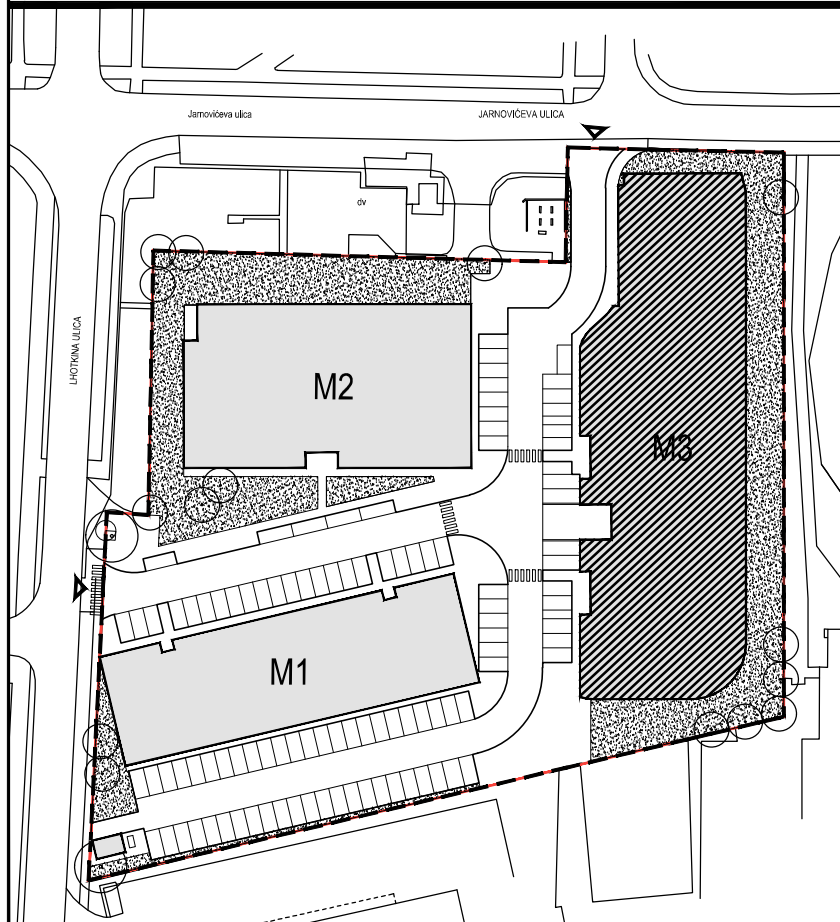
STAN M3A-2



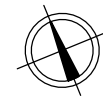
POLOŽAJ U NASELJU



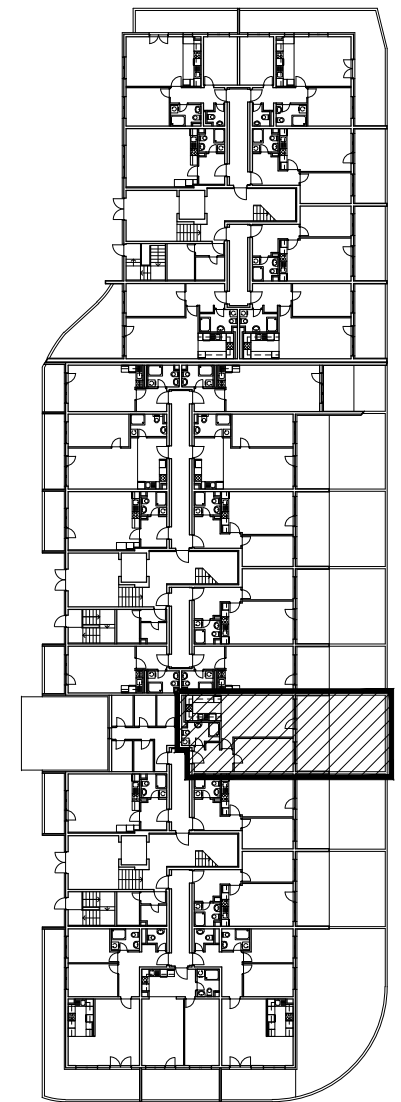
SITUACIJA



MJ 1:100



TLOCRT PRIZEMLJA



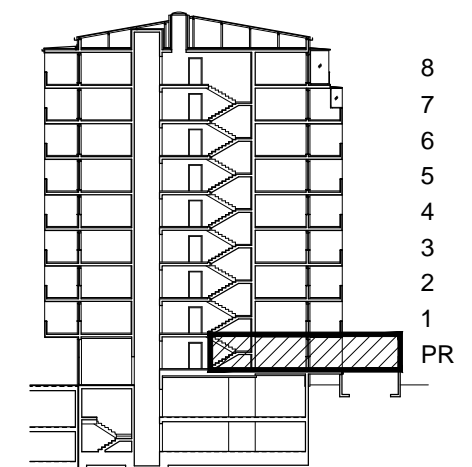
POLOŽAJ STANA U ZGRADI

STAN M3A-2 - dvosobni

PRIZEMLJE

PRESJEK

1. ULAZ		7.37	m ²
2. DNEVNI BORAVAK		20.99	m ²
3. KUPAONICA		5.30	m ²
4. KUHINJA		6.68	m ²
5. SOBA		13.28	m ²
6. LOGGIA	0.75x16.67	12.50	m ²
SVEUKUPNO		66.12	m²
7. VRT		29.20	m ²



POLOŽAJ STANA U ZGRADI

STAN M3A-2 P= 66.12 m², VRT 29.20 m²