

SITUACIJA



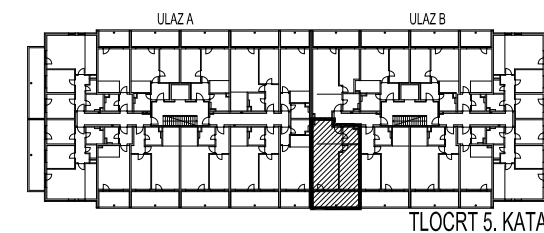
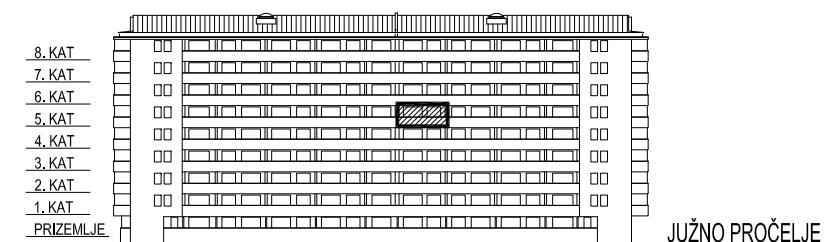
STAMBENA  
GRAĐEVINA

**E3**

Ivekovičeva – Lovinčičeva - Ulica Branka Perice  
na k.č.br. 4090/1

## ULAZ B - 5. KAT - E3-B-56

POLOŽAJ STANA



### E3-B-56, 2-sobni

		POVRŠINA	xKOEUF.	PRODAJNA POVRŠINA
1	ULAZ/ KUHINJA	10,72	1,00	10,72 m <sup>2</sup>
2	DN.BORAVAK+ BLAG.	21,03	1,00	21,03 m <sup>2</sup>
3	SOBA	14,94	1,00	14,94 m <sup>2</sup>
4	KUPAONICA	4,51	1,00	4,51 m <sup>2</sup>
5	LODJA	12,34	0,75	9,26 m <sup>2</sup>

**60,46 m<sup>2</sup>**



TLOCRT STANA - MJERILO 1:100