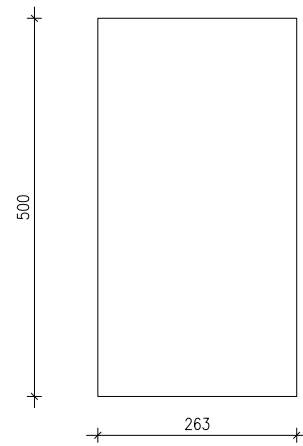
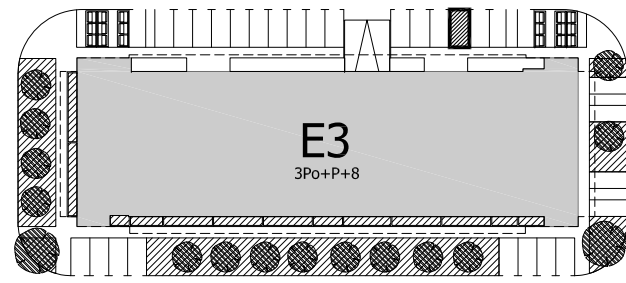


TLOCRT I SMJEŠTAJ PARKIRALIŠNOG MJESTA PM 285



SITUACIJA



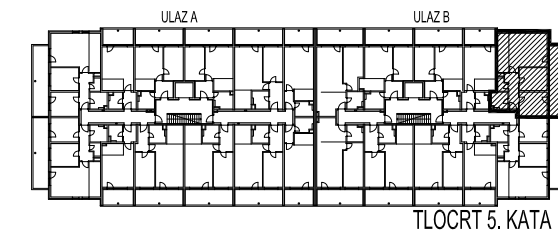
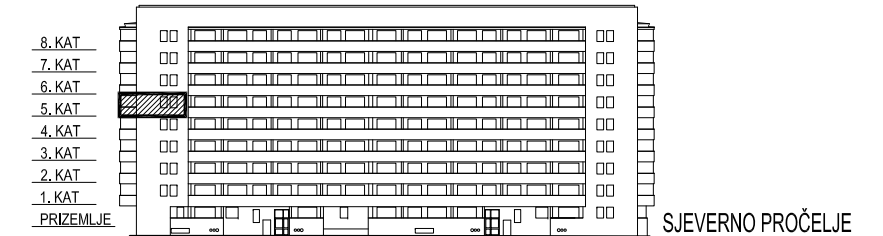
STAMBENA
GRAĐEVINA

E3

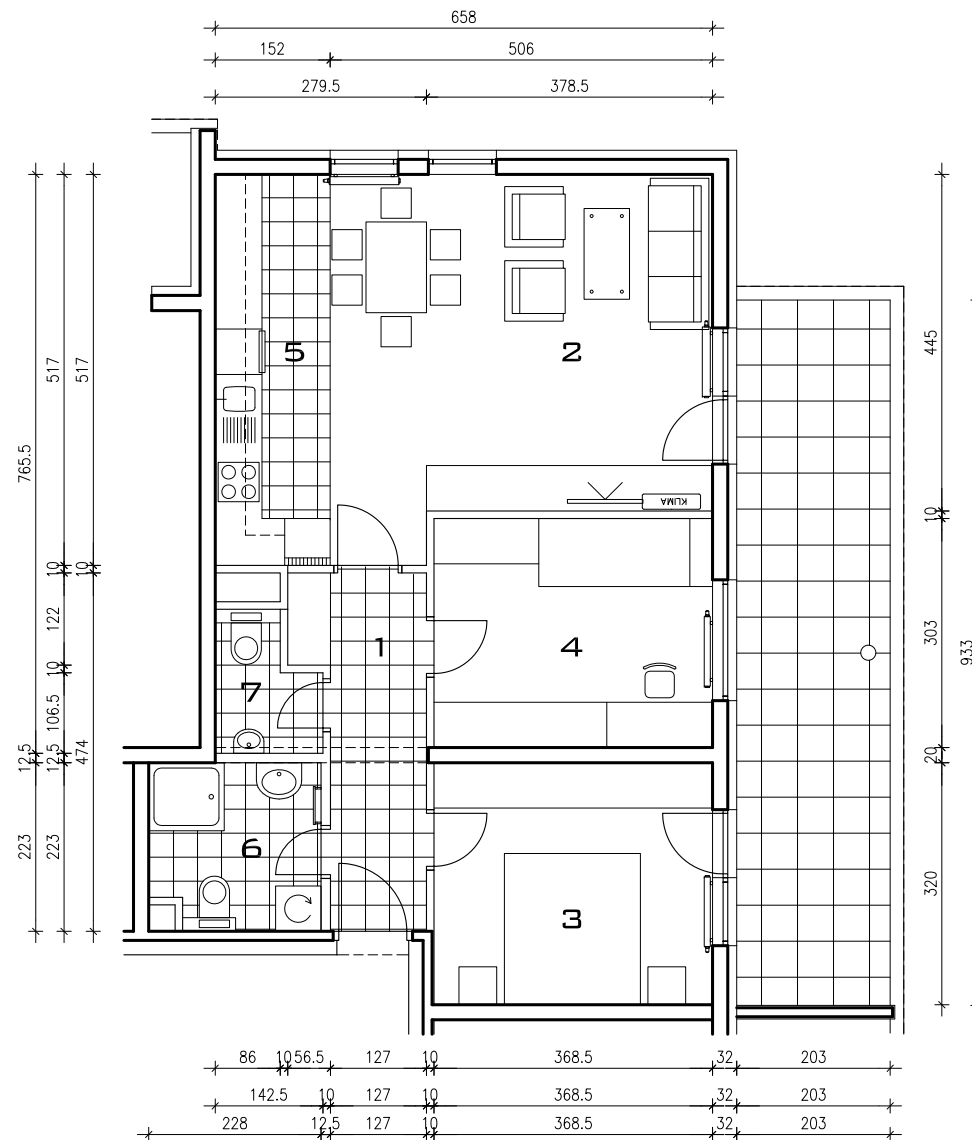
Ivekovića – Lovinčičeva - Ulica Branka Perice
na k.č.br. 4090/1

ULAZ B - 5. KAT - E3-B-51

POLOŽAJ STANA



E3-B-51, 3-sobni



POVRŠINA xKOEF. PRODAJNA POVRŠINA

1	ULAZ	6,71	1,00	6,71 m ²
2	DN.BORAVAK+ BLAG.	23,44	1,00	23,44 m ²
3	SOBA 1	11,79	1,00	11,79 m ²
4	SOBA 2	11,17	1,00	11,17 m ²
5	KUHINJA	7,86	1,00	7,86 m ²
6	KUPAONICA	4,88	1,00	4,88 m ²
7	WC	2,24	1,00	2,24 m ²
8	BALKON	18,94	0,50	9,47 m ²

77,56 m²

PARK. MJESTO	PM 285	13,15	1,00	13,15 m ²
--------------	--------	-------	------	----------------------



TLOCRT STANA - MJERILO 1:100