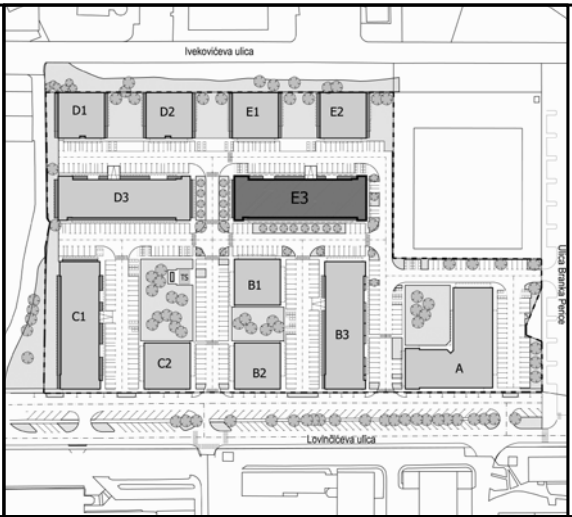


SITUACIJA

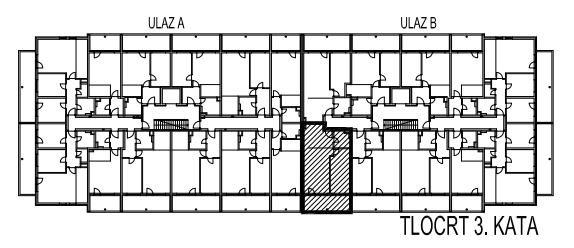
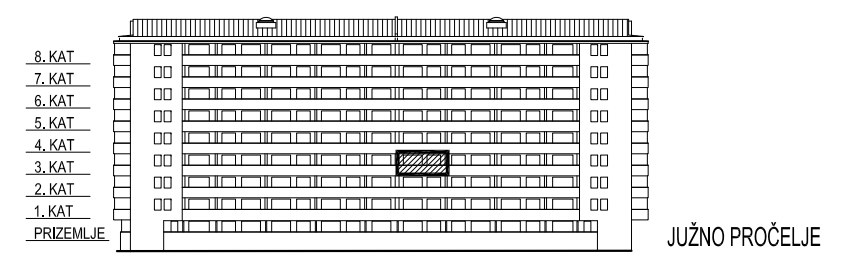


# STAMBENA GRAĐEVINA E3

Ivekovičeva – Lovinčičeva - Ulica Branka Perice  
na k.č.br. 4090/1

## ULAZ B - 3. KAT - E3-B-36

POLOŽAJ STANA



### E3-B-36, 2-sobni

		POVRŠINA	xKOEUF.	PRODAJNA POVRŠINA
1	ULAZ/ KUHINJA	10,81	1,00	10,81 m <sup>2</sup>
2	DN.BORAVAK+ BLAG.	21,03	1,00	21,03 m <sup>2</sup>
3	SOBA	14,94	1,00	14,94 m <sup>2</sup>
4	KUPAONICA	4,51	1,00	4,51 m <sup>2</sup>
5	LODJA	12,34	0,75	9,26 m <sup>2</sup>
				<b>60,55 m<sup>2</sup></b>



TLOCRT STANA - MJERILO 1:100