

STAMBENA GRAĐEVINA

E3

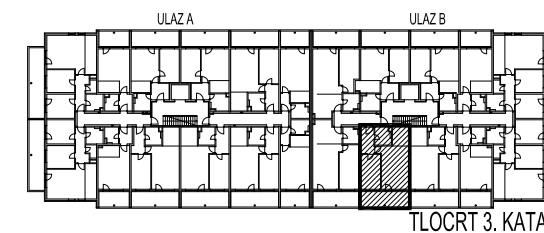
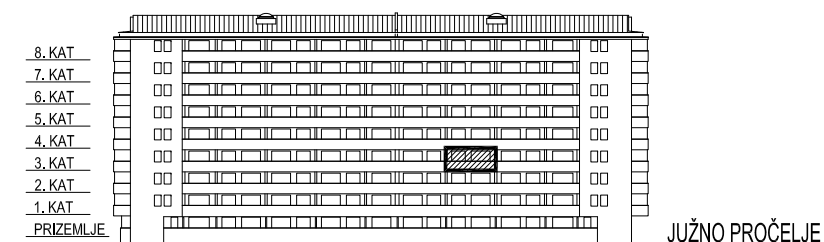
Ivekovičeva – Lovinčičeva - Ulica Branka Perice
na k.č.br. 4090/1

SITUACIJA



ULAZ B - 3. KAT - E3-B-35

POLOŽAJ STANA

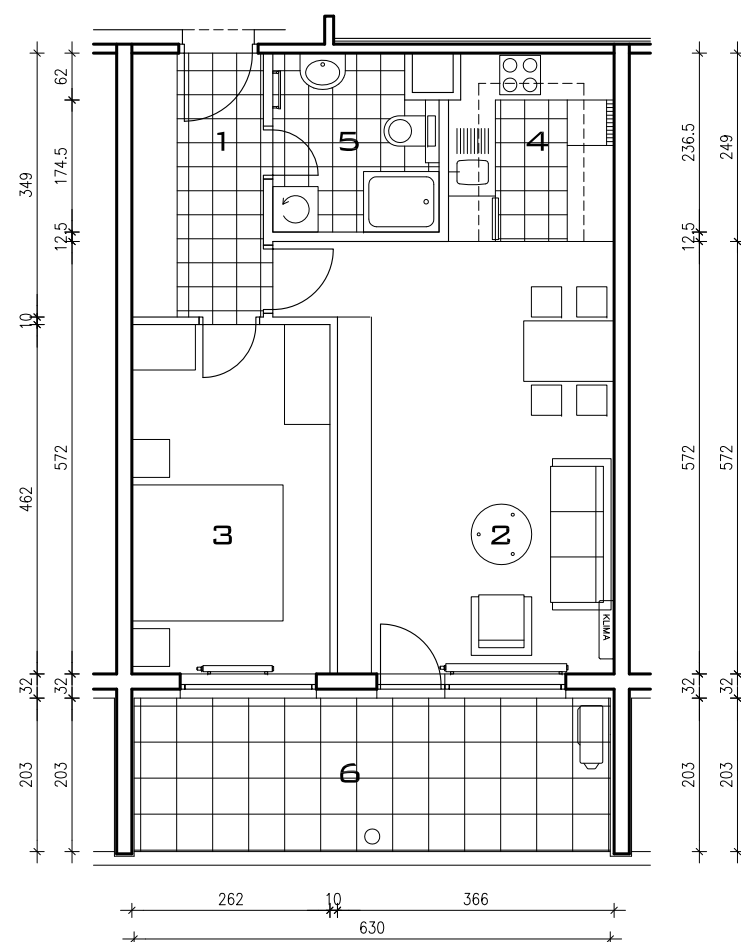


E3-B-35, 2-sobni

		POVRŠINA	xKOEIF.	PRODAJNA POVRŠINA
1	ULAZ	6,07	1,00	6,07 m ²
2	DN.BORAVAK+ BLAG.	21,79	1,00	21,79 m ²
3	SOBA	12,10	1,00	12,10 m ²
4	KUHINJA	5,35	1,00	5,35 m ²
5	KUPAONICA	4,92	1,00	4,92 m ²
6	LODJA	12,79	0,75	9,59 m ²

59,82 m²

174	12,5	220	12,5	219
174	12,5	451,5		
174	12,5	85,5	366,5	



TLOCRT STANA - MJERILO 1:100