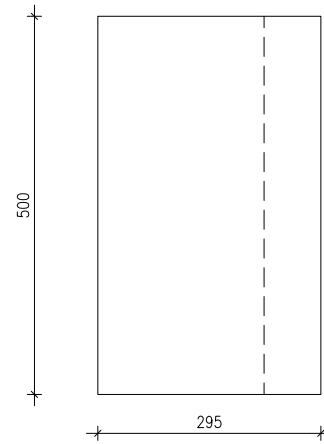
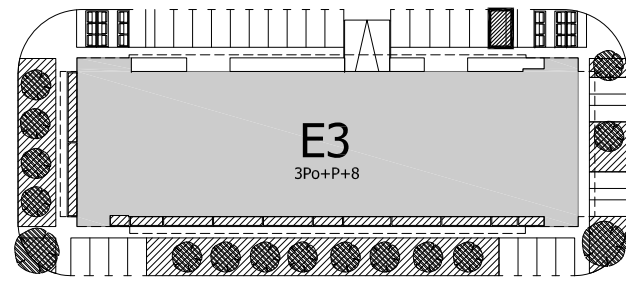


TLOCRT I SMJEŠTAJ PARKIRALIŠNOG MJESTA PM 283



SITUACIJA



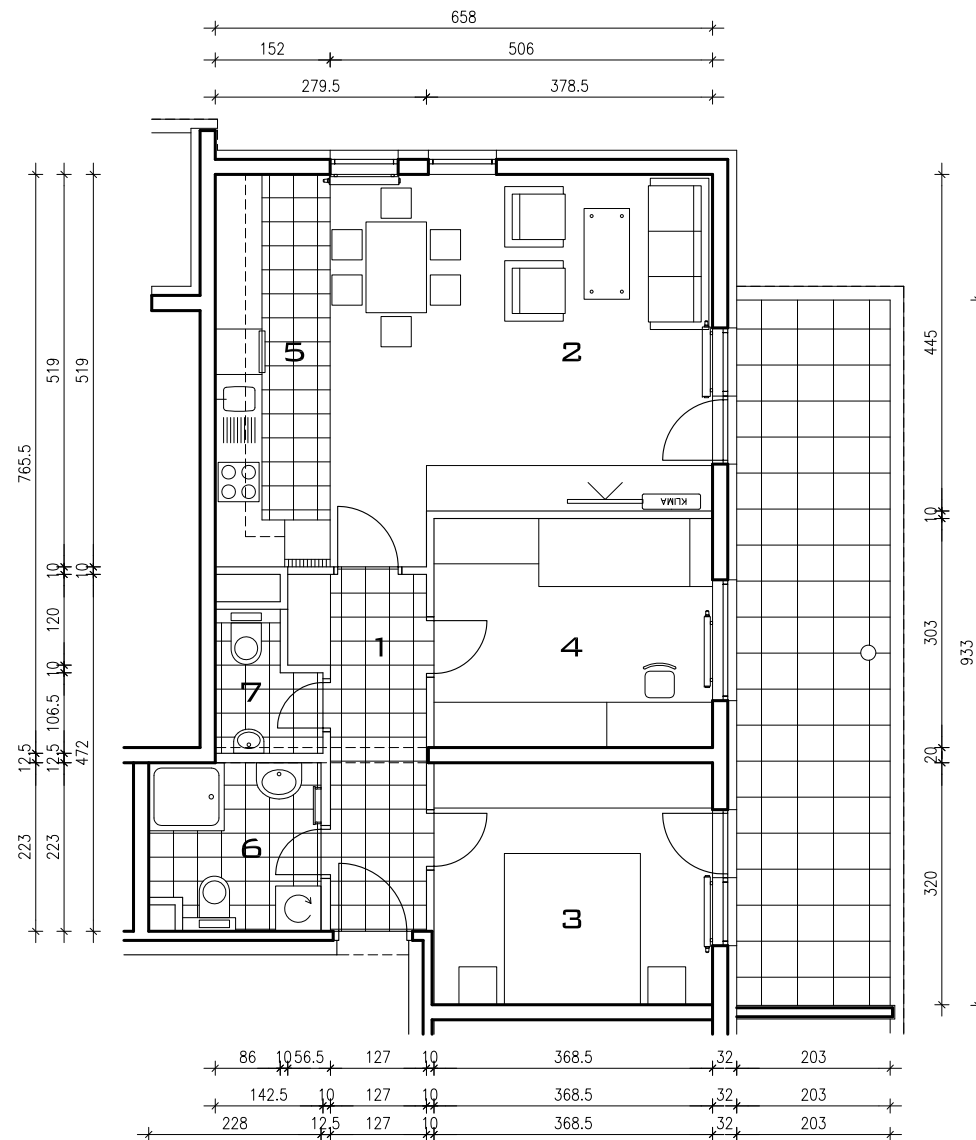
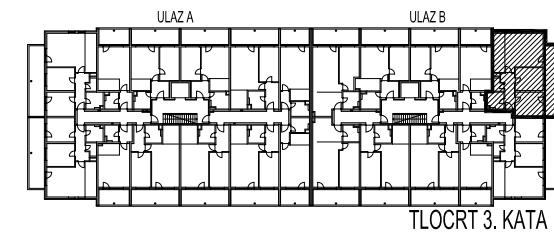
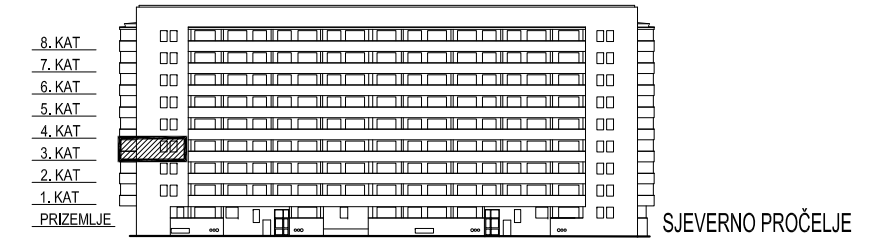
STAMBENA
GRAĐEVINA

E3

Ivekovića – Lovinčičeva - Ulica Branka Perice
na k.č.br. 4090/1

ULAZ B - 3. KAT - E3-B-31

POLOŽAJ STANA



E3-B-31, 3-sobni

| | | POVRŠINA | xKOEIF. | PRODAJNA POVRŠINA |
|--------------|-------------------|----------|---------|----------------------------|
| 1 | ULAZ | 6,67 | 1,00 | 6,67 m ² |
| 2 | DN.BORAVAK+ BLAG. | 23,46 | 1,00 | 23,46 m ² |
| 3 | SOBA 1 | 11,79 | 1,00 | 11,79 m ² |
| 4 | SOBA 2 | 11,17 | 1,00 | 11,17 m ² |
| 5 | KUHINJA | 7,89 | 1,00 | 7,89 m ² |
| 6 | KUPAONICA | 4,88 | 1,00 | 4,88 m ² |
| 7 | WC | 2,24 | 1,00 | 2,24 m ² |
| 8 | BALKON | 18,94 | 0,50 | 9,47 m ² |
| | | | | 77,57 m² |
| PARK. MJESTO | PM 283 | 14,75 | 1,00 | 14,75 m ² |



TLOCRT STANA - MJERILO 1:100