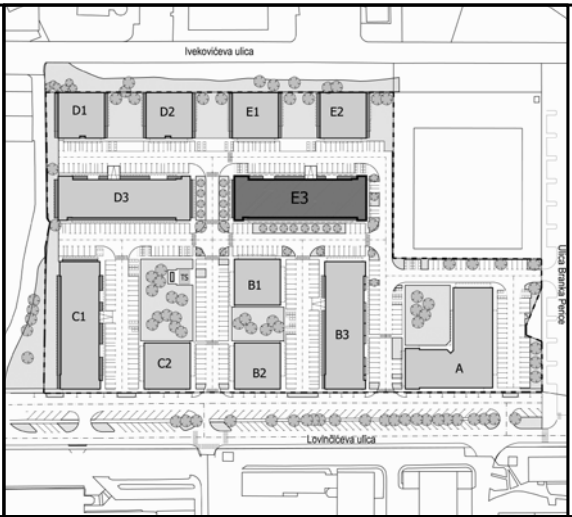


SITUACIJA



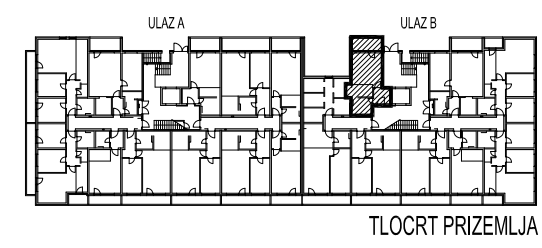
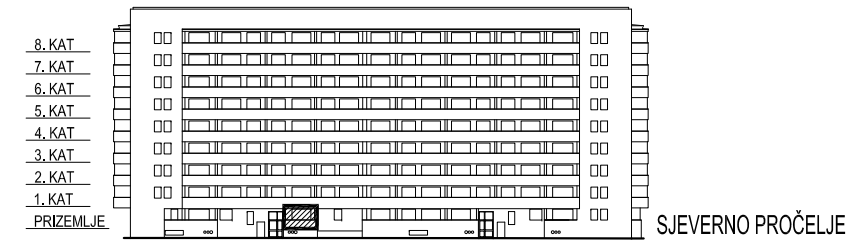
STAMBENA GRAĐEVINA

E3

Ivekovića – Lovinčičeva - Ulica Branka Perice
na k.č.br. 4090/1

ULAZ A - PRIZEMLJE - E3-B-08

POLOŽAJ STANA



E3-B-08, 1-sobni

		POVRŠINA	xKOE.F.	PRODAJNA POVRŠINA
1	ULAZ	4,35	1,00	4,35 m ²
2	DN.BORAVAK+ BLAG.	17,09	1,00	17,09 m ²
3	KUHINJA	5,55	1,00	5,55 m ²
4	KUPAONICA	5,74	1,00	5,74 m ²
5	LODJA	6,29	0,75	4,72 m ²
				37,45 m²



TLOCRT STANA - MJERILO 1:100