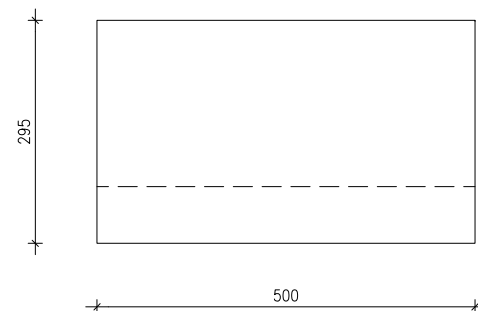
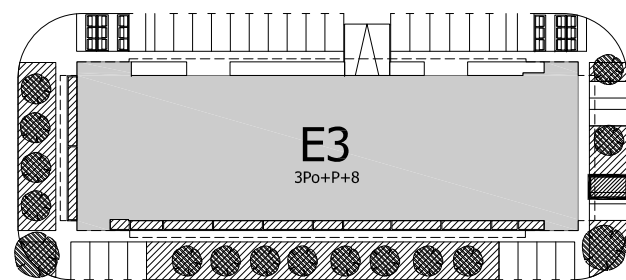


TLOCRT I SMJEŠTAJ PARKIRALIŠNOG MJESTA PM 279



SITUACIJA



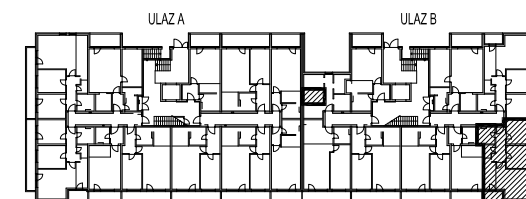
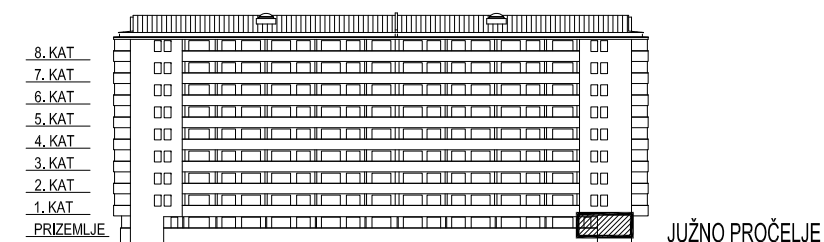
STAMBENA  
GRAĐEVINA

**E3**

Ivekovića – Lovinčičeva - Ulica Branka Perice  
na k.č.br. 4090/1

**ULAZ A - PRIZEMLJE - E3-B-03**

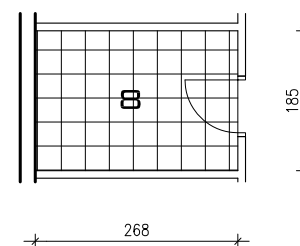
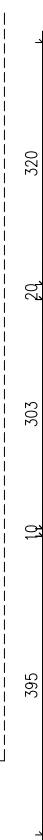
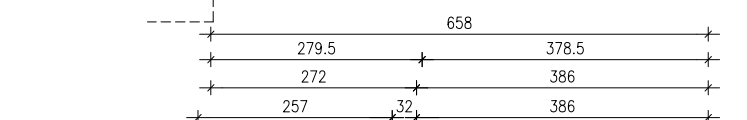
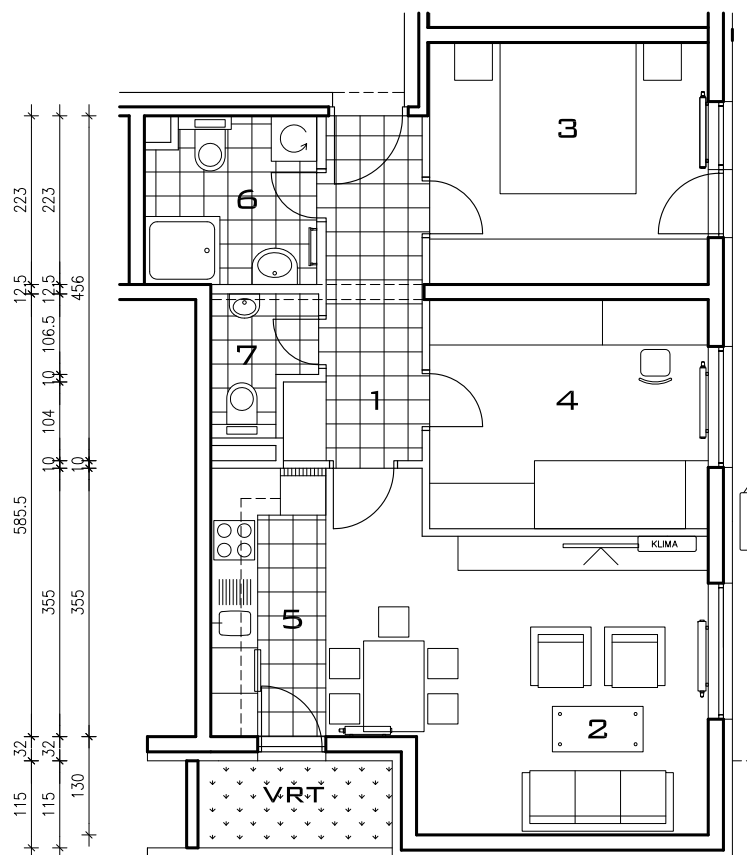
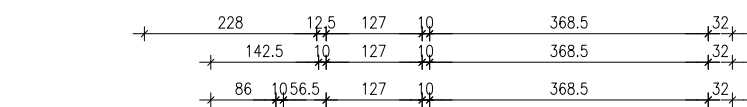
POLOŽAJ STANA



TLOCRT PRIZEMLJA

**E3-B-03, 3-sobni**

		POVRŠINA	xKOEUF.	PRODAJNA POVRŠINA
1	ULAZ	6,38	1,00	6,38 m <sup>2</sup>
2	DN.BORAVAK+ BLAG.	19,57	1,00	19,57 m <sup>2</sup>
3	SOBA 1	11,79	1,00	11,79 m <sup>2</sup>
4	SOBA 2	11,17	1,00	11,17 m <sup>2</sup>
5	KUHINJA	5,40	1,00	5,40 m <sup>2</sup>
6	KUPAONICA	4,88	1,00	4,88 m <sup>2</sup>
7	WC	2,25	1,00	2,25 m <sup>2</sup>
9	SPREMIŠTE 2	4,96	0,75	3,72 m <sup>2</sup>
				<b>65,16 m<sup>2</sup></b>
	VRT	2,96	1,00	2,96 m <sup>2</sup>
	PARK. MJESTO PM 279	14,75	1,00	14,75 m <sup>2</sup>



TLOCRT STANA - MJERILO 1:100

SPREMIŠTE 2 U PRIZEMLJU