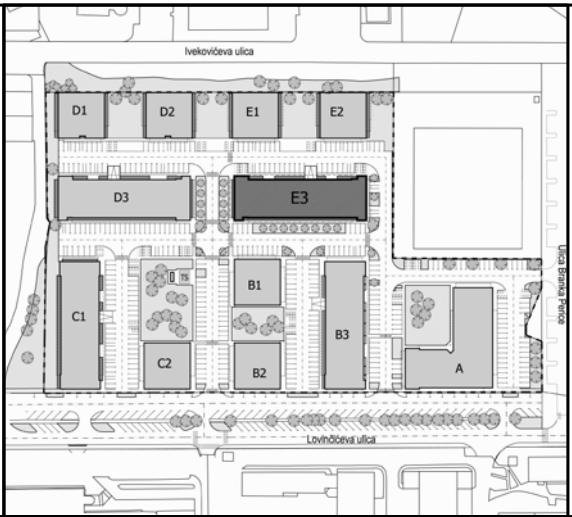


↑  
TLOCRT STANA - MJERILO 1:100

SITUACIJA

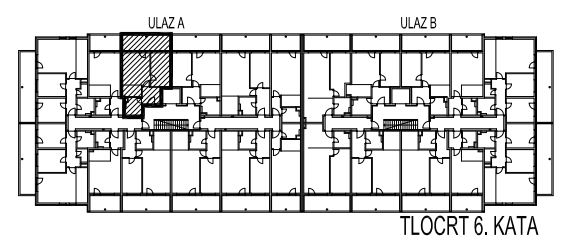
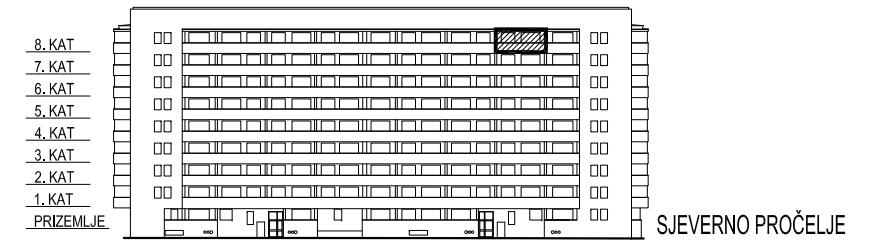


# STAMBENA GRAĐEVINA E3

Ivekovića – Lovinčičeva - Ulica Branka Perice  
na k.č.br. 4090/1

## ULAZ A - 8. KAT - E3-A-96

POLOŽAJ STANA



### E3-A-96, 2-sobni

		POVRŠINA	xKOEIF.	PRODAJNA POVRŠINA
1	ULAZ	5,15	1,00	5,15 m <sup>2</sup>
2	DN.BORAVAK+ BLAG.	15,87	1,00	15,87 m <sup>2</sup>
3	SOBA	11,58	1,00	11,58 m <sup>2</sup>
4	KUHINJA	3,59	1,00	3,59 m <sup>2</sup>
5	KUPAONICA	4,79	1,00	4,79 m <sup>2</sup>
6	LODJA	12,79	0,75	9,59 m <sup>2</sup>

50,57 m<sup>2</sup>