

TLOCRT STANA - MJERILO 1:100

SITUACIJA



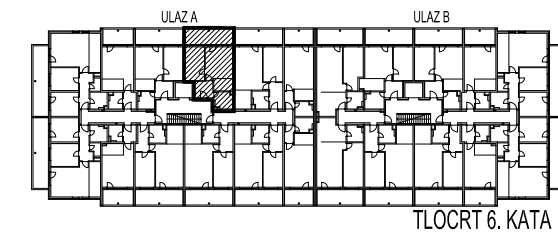
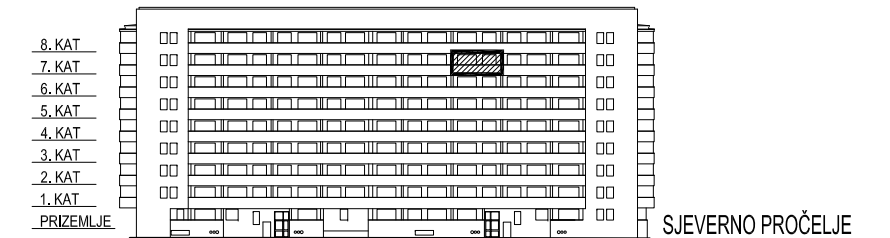
STAMBENA
GRAĐEVINA

E3

Ivekovičeva – Lovinčičeva - Ulica Branka Perice
na k.č.br. 4090/1

ULAZ A - 7. KAT - E3-A-95

POLOŽAJ STANA



E3-A-95, 2-sobni

		POVRŠINA	xKOEUF.	PRODAJNA POVRŠINA
1	ULAZ	5,15	1,00	5,15 m ²
2	DN.BORAVAK+ BLAG.	15,70	1,00	15,70 m ²
3	SOBA	11,58	1,00	11,58 m ²
4	KUHINJA	4,13	1,00	4,13 m ²
5	KUPAONICA	5,15	1,00	5,15 m ²
6	LODJA	12,79	0,75	9,59 m ²

51,30 m²